

TWEED SAND BYPASSING

MINUTES	
Advisory Community Committee (ACC) Meeting	
5.00 pm Tuesday 08 September 2020	
Venue: Kirra Hill Community and Cultural Centre	
NSW and Qld Govt Project Attendees:	
AB	Adrian Barwick – Senior Engineer – NSW Govt - Tweed Sand Bypassing (CHAIR)
CR - via TEAMS	Celine Roux – Qld Project Director – Tweed Sand Bypassing
AJ - via TEAMS	Tony Johansson – NSW Project Director – Tweed Sand Bypassing
KB	Kim Bowra – Manager Tweed Sand Bypassing
PT	Peter Turner – Qld Community Representative
JL	Jane Lofthouse – AC Member – NSW Local Govt Representative
LW	Larry Woodland –AC Member – NSW Community Representative
MH - via TEAMS	Matthew Harry – A/Senior Coastal Management Specialist – Tweed Sand Bypassing
ZI	Zoe Immisch – AC Member – Qld Govt Rep
LR	Linda Rijkenberg – Qld Govt – Observer
PP	Paul Pinjuh – Qld Govt – minutes and admin
Guests:	
GO	Cr Gail O'Neill – Qld Local Govt Rep Nominee for AC

TWEED SAND BYPASSING

	AGENDA
	<ol style="list-style-type: none"> 1. Welcome and apologies 2. Community beach and entrance reports 3. Community Comments / Questions (All) 4. Project monitoring and operational overview <ul style="list-style-type: none"> • Sand bypassing system operations + delivery program • Environmental monitoring • Guest presentation - Griffith Centre for Coastal Management • Entrance conditions, usage and survey 5. Projects and enhancements and Communications 6. General Business 7. Next meeting: AC – 11 Nov 2020
1	WELCOME and APOLOGIES (AB) - Adrian as acting Chair
	Meeting opened 1705 – AB commenced the meeting with welcoming the attendees and acknowledging the traditional owners. Apologies were noted for WB and JP.
2	COMMUNITY BEACH AND ENTRANCE REPORTS (KB)
	<p>3 reports were received from the Community and are summarised below:</p> <p>Volunteer Marine Rescue</p> <p>Comments from Radio Operators on the 12th August 2020 and whilst on previous shifts that they observed rough bar crossings, white water north of the northern wall.</p> <p>Report of vessel asking for conditions as he had a rough crossing over the bar earlier on 12th August 2020.</p> <p>After dredge had left the Tweed Bar, a report on the 25th August 2020 was received from a vessel who witnessed a near roll over on the bar at low tide. 0642 hrs.</p> <p>No other reports received from other vessels or Radio Operators</p> <p>Fingal Rovers SLSC</p> <p>As requested, 6 monthly (March - September 2020) observation report on beach conditions at Fingal Beach between the northern end of the Fingal Caravan Park and the southern end of Fingal Beach (i.e. Fingal Rovers' Primary and Secondary Patrol Zones)</p> <p>From observation of Rovers' primary and secondary patrol zone (north end of the Caravan Park, south to the headland) for the period:</p>

	<p>March/April 2020 reported significant sand being returned onshore resulting in little/no exposed rocks. Rovers had no issue in setting patrols within our Primary Zone and a shallow lagoon was present at low tide in front of the club which was a popular spot for families. May/early June 2020, tidal movements and predominately southerly weather conditions has caused some sand movement in front of the surf club/caravan park resulting in rock exposure and a small sand dune drop off being created. These conditions did not impact Rovers as we are in our off season until the 26 September. Since June, a significant volume of sand has landed on the beach and covered the exposed rocks.</p> <p>Energetic (and popular) surf conditions continue along this stretch of beach with significant volumes of sand returned to the southern end pocket of Fingal Beach</p> <p>Ocean Dive Charters</p> <p>Tweed River entrance has been a lot better after the recent dredge work.</p>
3	PROJECT MONITORING AND OPERATIONAL OVERVIEW (MH)
	<p>Sand bypassing system operations + delivery program</p> <ul style="list-style-type: none"> • Sand bypassing system operations + delivery program • Environmental monitoring • Entrance conditions, usage and survey • Projects and enhancements • Communications <p>* Refer to presentation addendum for content of the above items *</p>
4.	COMMUNITY COMMENTS (ALL)
	<p>Cr Gail O'Neil – City of Gold Coast update</p> <ul style="list-style-type: none"> • No news from any of the southern Gold Coast surf clubs • Stormwater outlet (Coolangatt creek) at North Kirra Beach touched on. Potential works being looked at to improve the current situation relating to poor water quality. Signage recommends no swimming. Weekly testing of water quality undertaken. • Currumbin creek discussed. Dredging imminent by Council. <p>Peter Turner – Community representative</p> <ul style="list-style-type: none"> • A good sandbank for surfing and a wide beach at Kirra. Snapper Rocks/Rainbow/Greenmount were highly patronized by people. • Kirra is close to conditions of the early 1960s, though still not the fast hollow Kirra was famous for. • Kirra Creek looking very uninviting due to colour from tea trees dropping leaves. • Most of the surfers and beach users Peter spoke to stated the beaches are in pretty good condition. <p>Cr O'Neil asked about community consultation in relation to TRESBP transition project currently underway. KB advised semi-regular engagement with the community would be part of the Transition Project as has already occurred for current phases.</p>

	<p>Larry Woodland – NSW Community Representative</p> <ul style="list-style-type: none"> • Lots of sand at Dreamtime; there were some sand losses 6–8 weeks ago. • Fingal Beach is looking good and is good for surfing. • He said the local surf club appreciate being consulted and kept up to date. • Larry’s personal observation was that during dredging the sand was staying offshore. • No negative complaints from Fingal area. <p>Jane Lofthouse – Tweed Shire Council update on Coastal Management Program (CMP):</p> <ul style="list-style-type: none"> • Coastal Management Briefs are out for updating of coastal hazard lines • Cliff stability testing planned for Coral St Duranbah; most likely a desktop study • To assist with inundation in coastal districts, update hazard assessment studies. • Next stage will look at community options <p>Zoe Immisch – Qld Govt representative:</p> <ul style="list-style-type: none"> • Nothing of concern to ESR from the dredging. • Personal observations: sand out from Rainbow around the headland • Lots more surfer/swimmer interaction • In her seconded position with Coastal Planning and Policy Zoe is updating the Code for accepted development - for tidal works, or work completely or partly in a coastal management district and asked if there were any particular development types related to TSB the project would want included. <p>Celine Roux – Qld Project Director</p> <ul style="list-style-type: none"> • DES through QGHL has started a body of work to enhance the knowledge of dredge placement and knowledge of coastal processes through physical modelling works. <p>Tony Johansson – NSW Project Director</p> <ul style="list-style-type: none"> • Tony introduced as the NSW Project Director and representative for Transport for New South Wales
5.	General Business
	<p>JL mentioned the Tweed offshore artificial reef designated for fishers with diving being discouraged.</p> <p>Meeting closed at 1823</p>
6.	Next meeting
	COVID permitting the next is to be held 11 November 2020. TO BE CONFIRMED.

ACC Meeting – 8 September 2020

TWEED SAND BYPASSING

- Project Monitoring / Operational Overview
 - Sand bypassing system operations + delivery program
 - Environmental Monitoring
 - Entrance conditions, usage and survey
 - TSB projects and enhancements
 - Communications

Sand Bypassing System Operations + Delivery Program

**TWEEDSAND
BYPASSING**
—

TWEED SAND BYPASSING

Pumping 2020

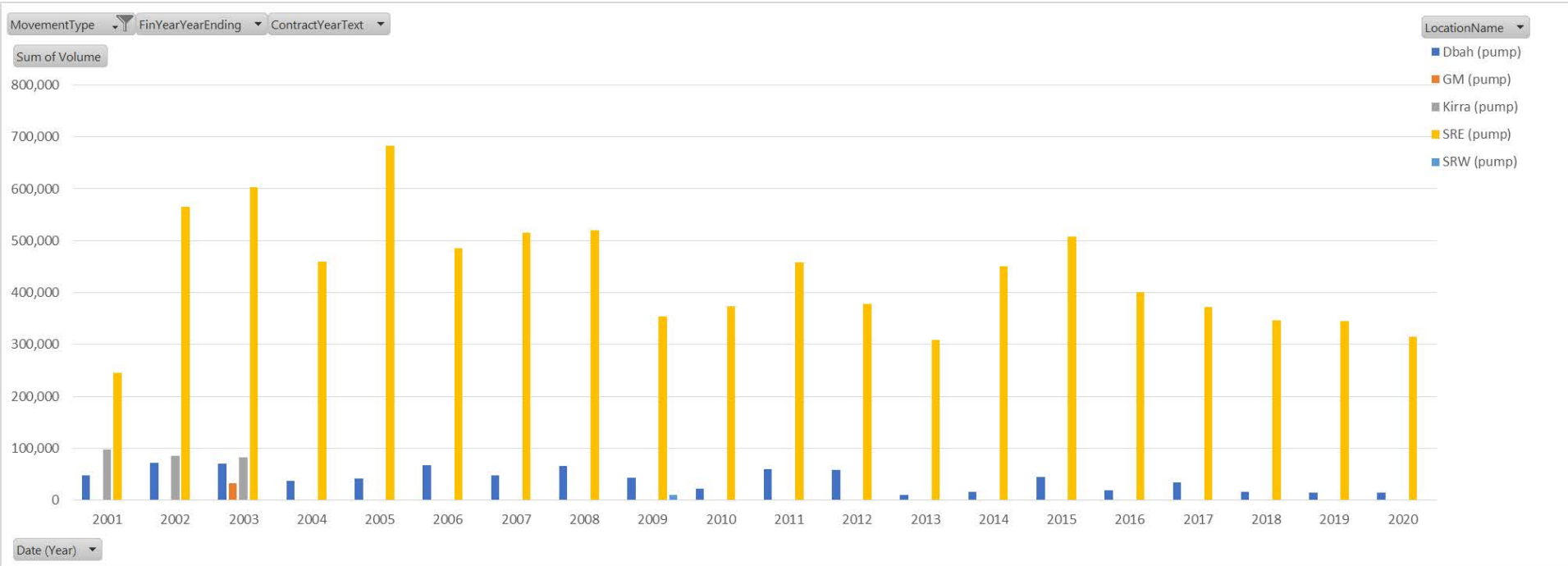
MONTH	Vol SRE (m3)	Vol D'Bah (m3)	Total Vol (m3)	AVG (2015-2019) (m3)
JAN	17,653	0	17,653	35,097
FEB	18,901	0	18,901	46,157
MAR	44,641	0	44,641	32,473
APR	30,744	0	30,744	37,865
MAY	44,821	14,415	59,236	33,324
JUN	59,634	0	59,634	52,980
JUL	72,403	0	72,403	38,230
AUG	25,980	0	25,980	33,811
SEP			0	28,522
OCT			0	24,913
NOV			0	27,353
DEC			0	29,090
TOTAL	314,777	14,415	329,192	419,814

Dredging 2020

MONTH	Duranbah	SRE	Fingal	Bilinga	Total Vol (m3)
JAN					
FEB					
MAR					
APR					
MAY					
JUN					
JUL					
AUG	30,229	22,199	24,750	33,000	110,178
SEP					
OCT					
NOV					
DEC					
TOTAL	30,229	22,199	24,750	33,000	110,178

TWEED SAND BYPASSING

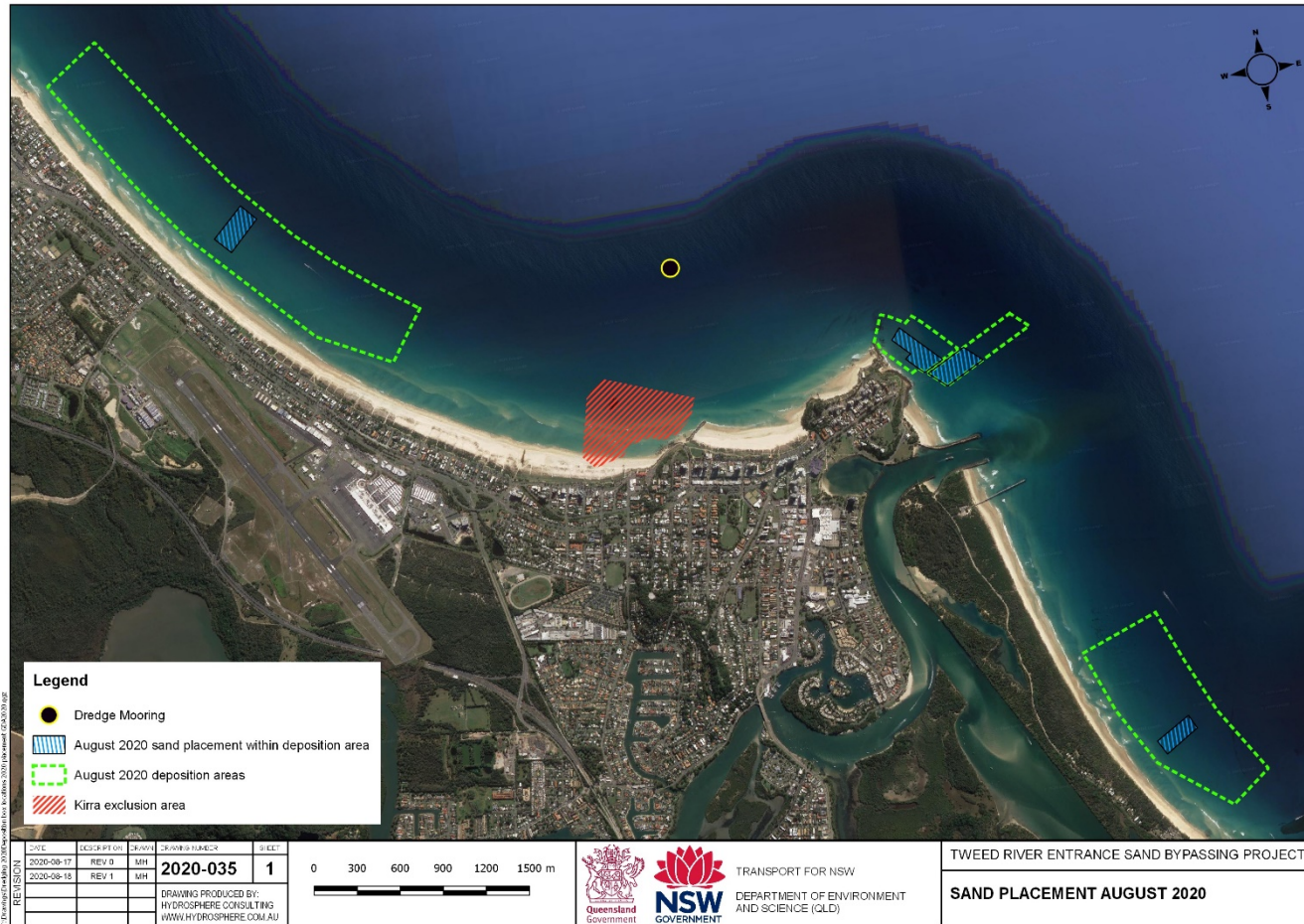
Pumping Volumes - Calendar year



Restoring Coastal Sand Drift - Improving Boating Access

TWEED SAND BYPASSING

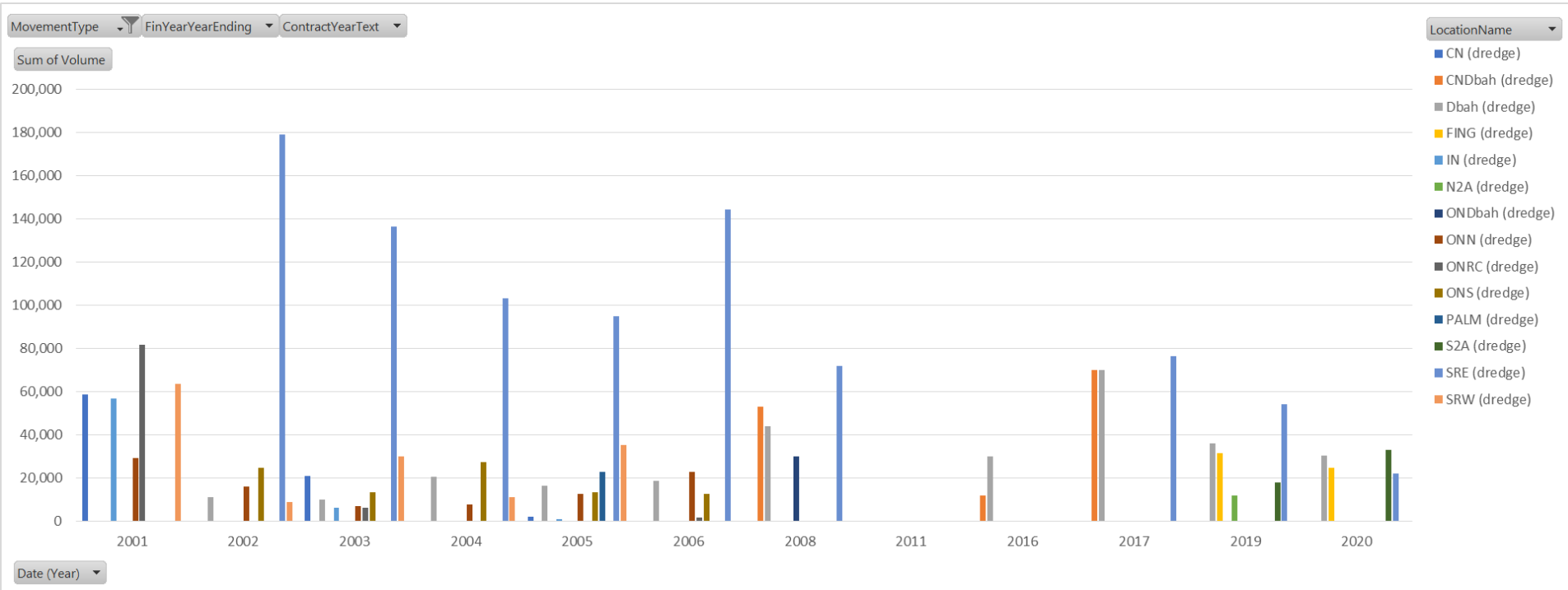
Dredging 2020



Restoring Coastal Sand Drift - Improving Boating Access

TWEED SAND BYPASSING

Dredge Volumes – Calendar Year

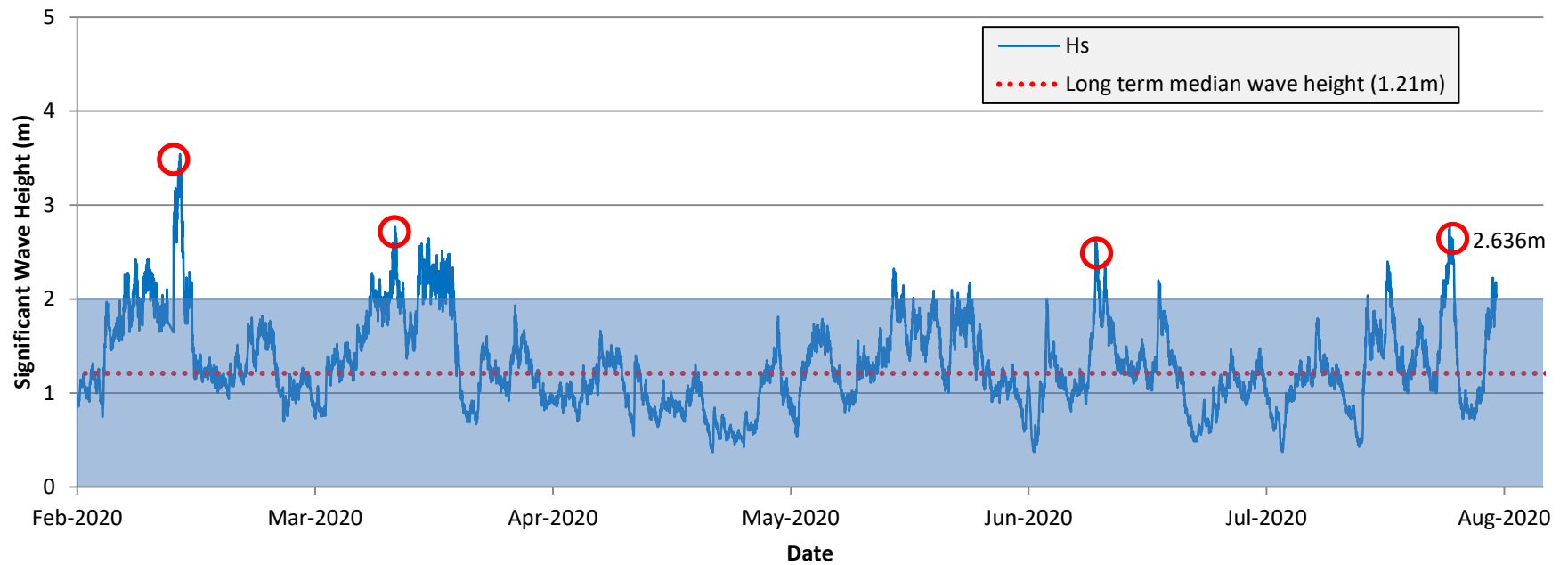


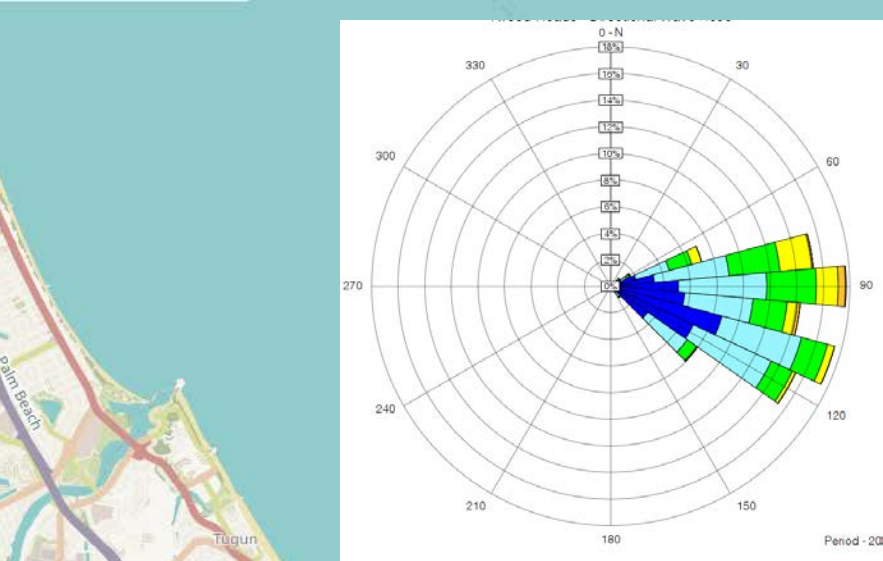
Restoring Coastal Sand Drift - Improving Boating Access

Environmental Monitoring

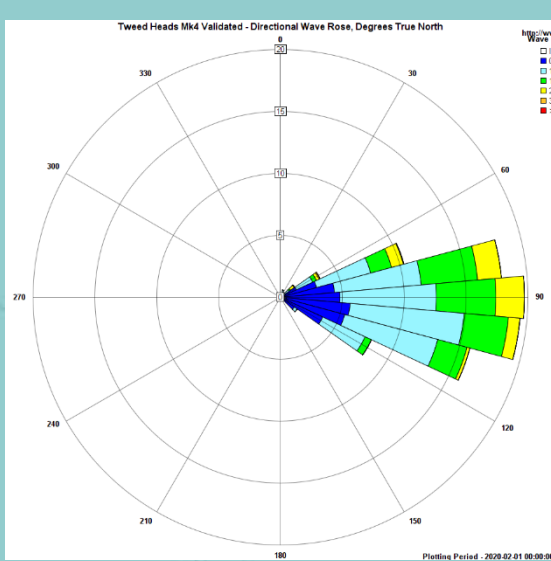
TWEED SAND
BYPASSING
—

Wave Data – Feb 2020 to Aug 2020



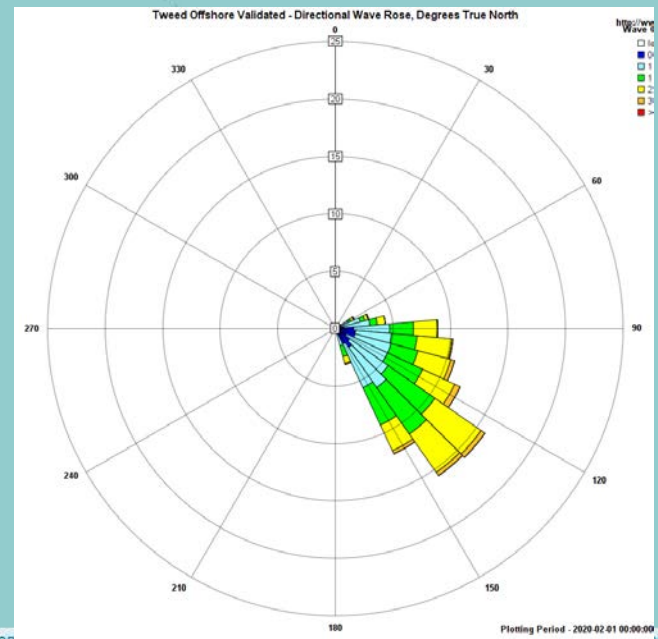


2019 Feb-Aug



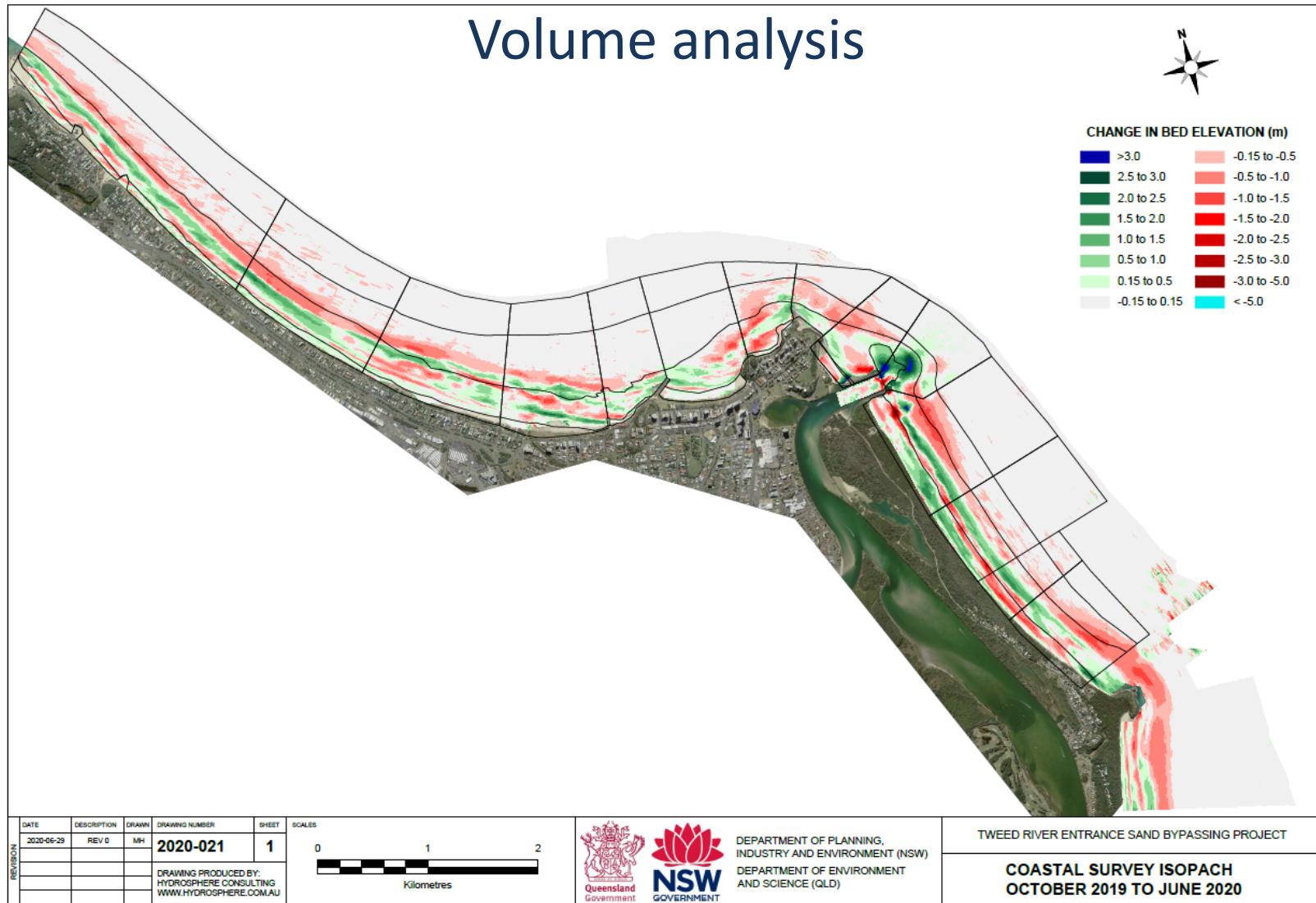
2020 Feb-Aug

2020 Feb-Aug
OFFSHORE



TWEED SAND BYPASSING

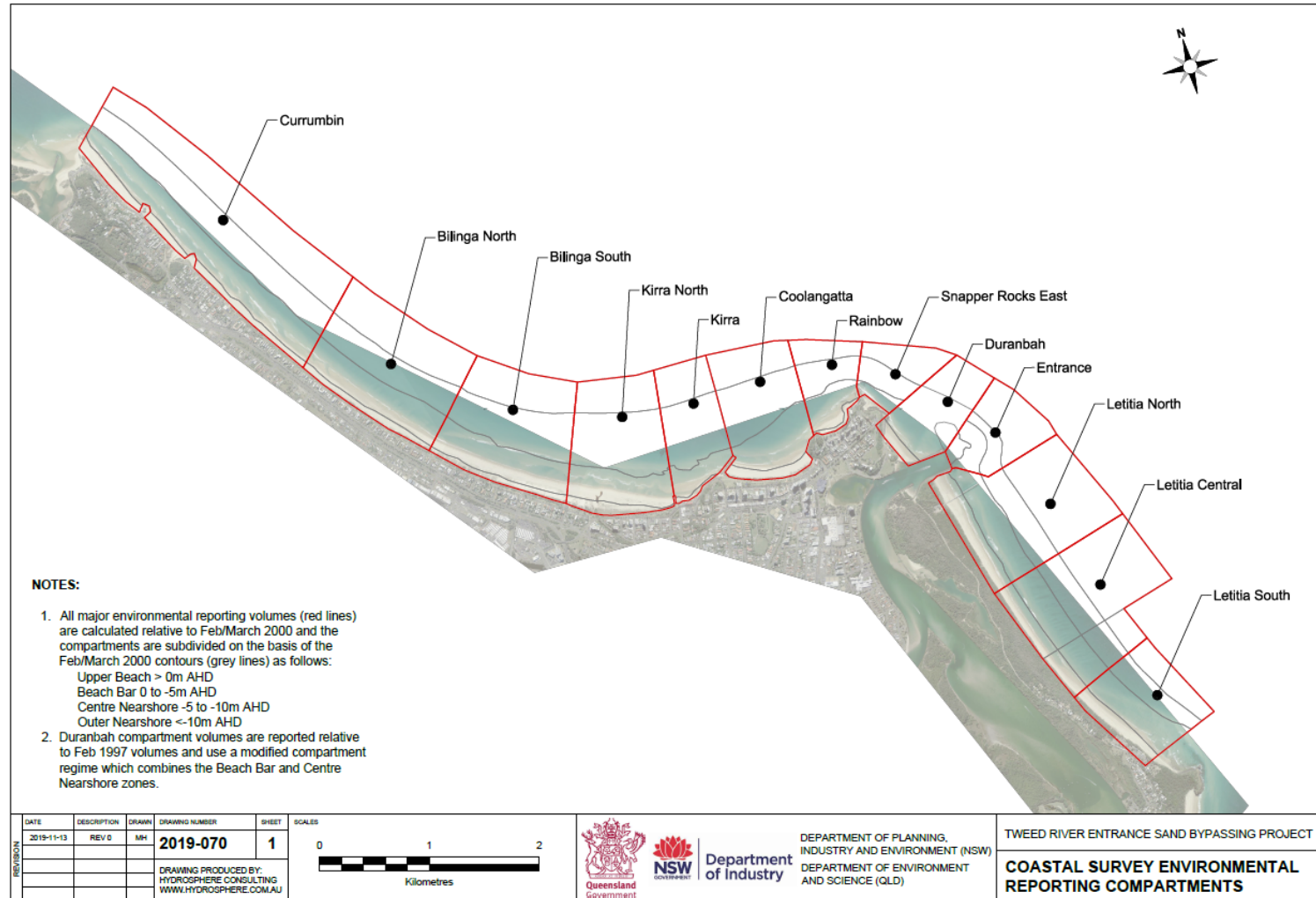
Volume analysis



Restoring Coastal Sand Drift - Improving Boating Access

TWEED SAND BYPASSING

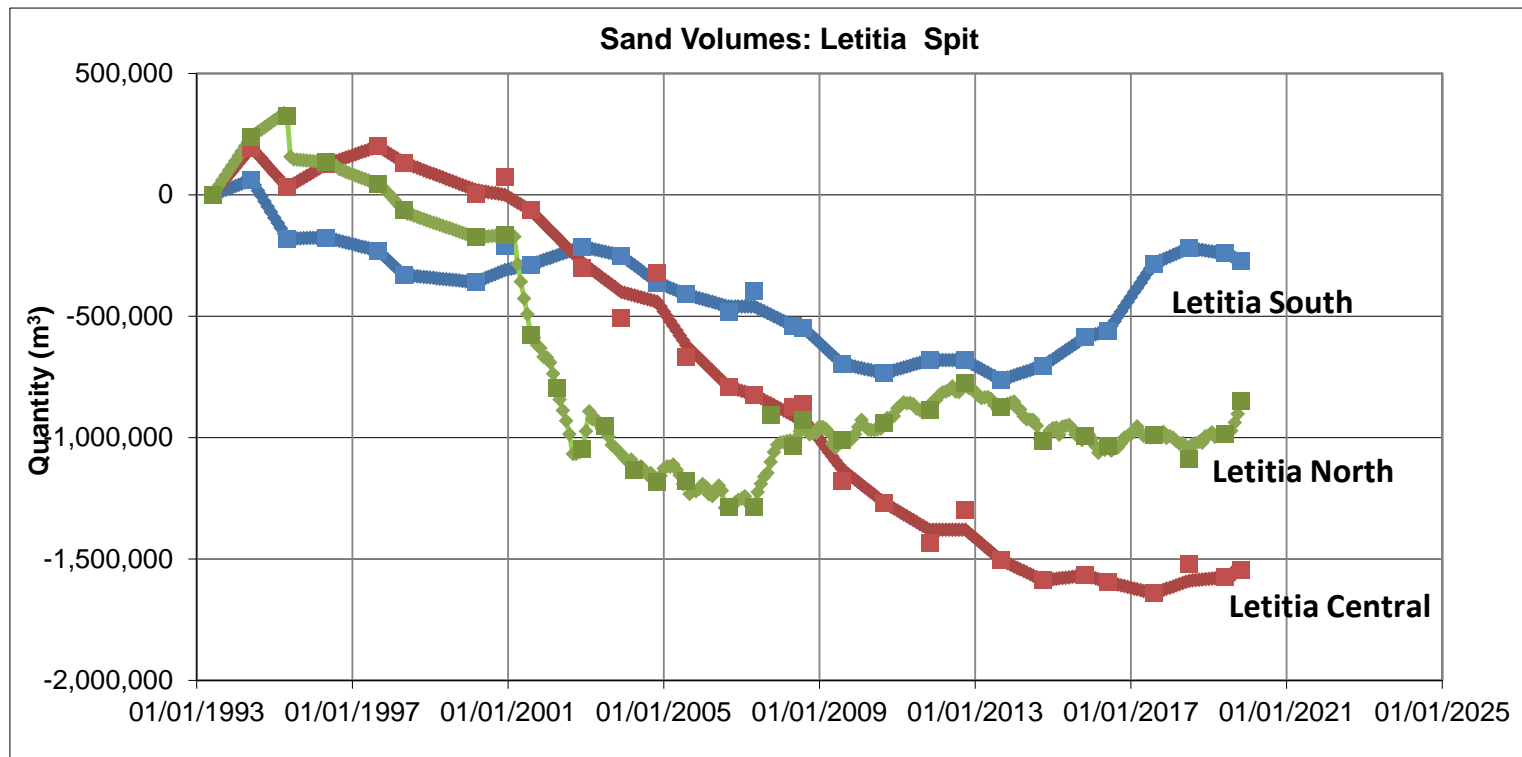
Volume analysis



Restoring Coastal Sand Drift - Improving Boating Access

TWEED SAND BYPASSING

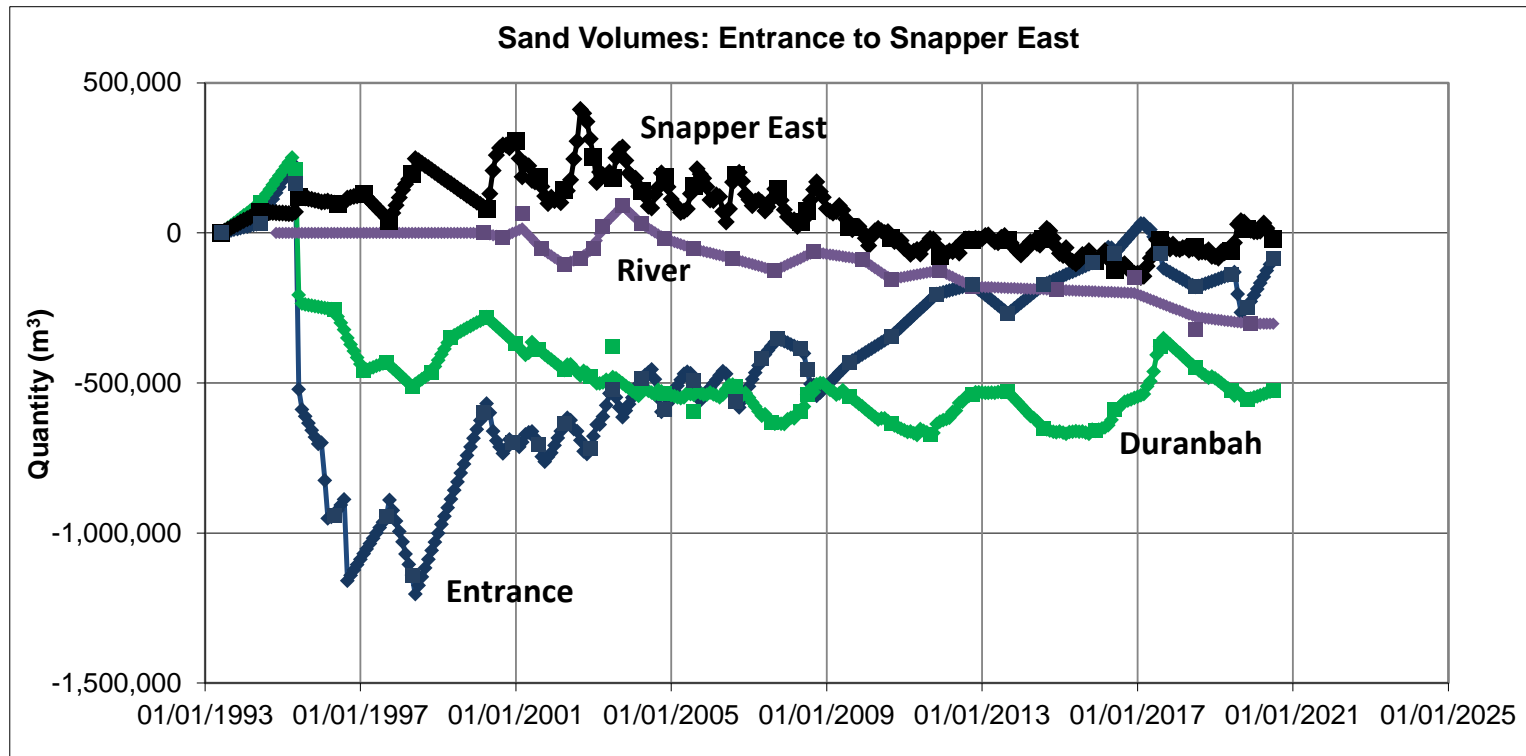
Volume analysis



Restoring Coastal Sand Drift - Improving Boating Access

TWEED SAND BYPASSING

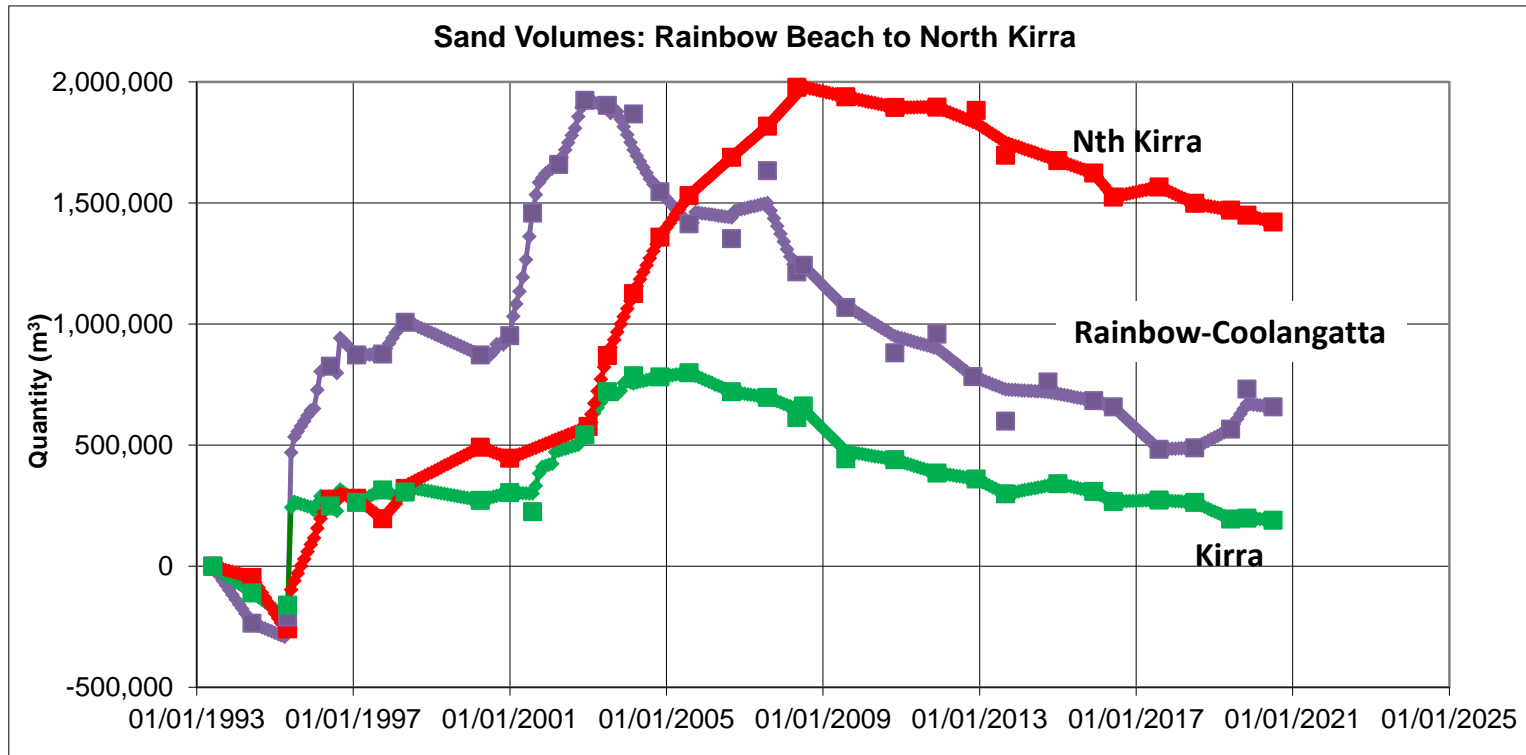
Volume analysis



Restoring Coastal Sand Drift - Improving Boating Access

TWEED SAND BYPASSING

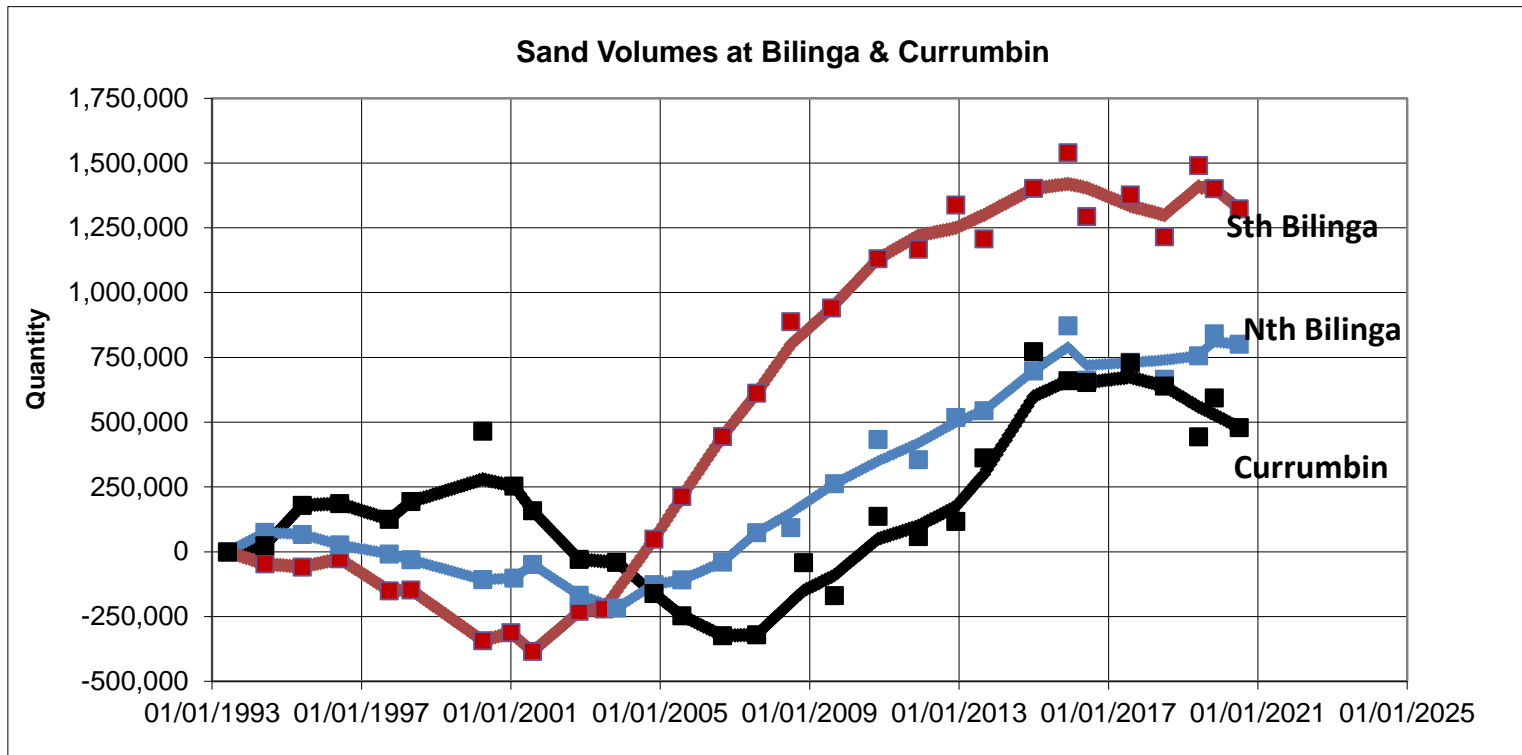
Volume analysis



Restoring Coastal Sand Drift - Improving Boating Access

TWEED SAND BYPASSING

Volume analysis



Restoring Coastal Sand Drift - Improving Boating Access

TWEED SAND BYPASSING

Fingal



26 March 2020



20 August 2020

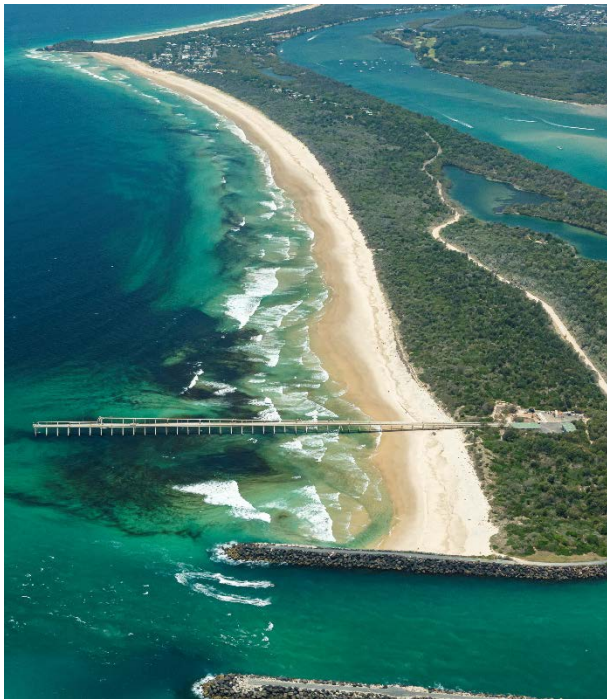


22 June 2020

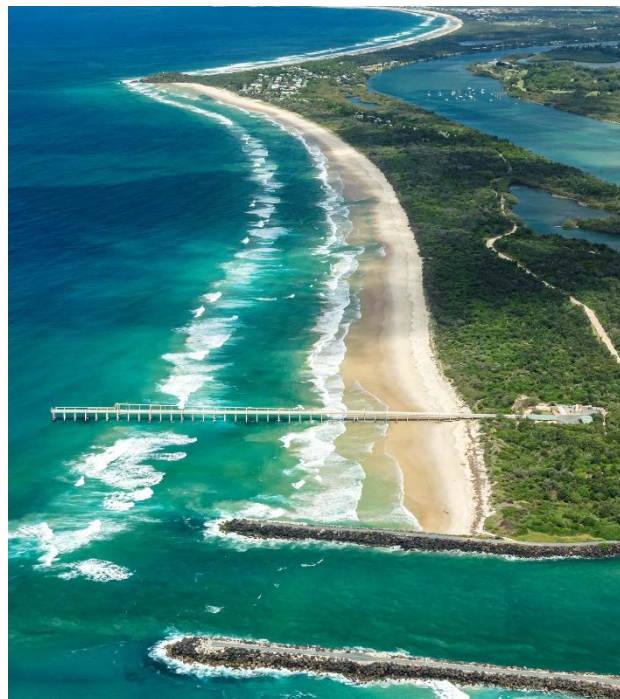
Restoring Coastal Sand Drift - Improving Boating Access

TWEED SAND BYPASSING

Letitia



9 January 2020



26 March 2020



22 June 2020

Restoring Coastal Sand Drift - Improving Boating Access

TWEED SAND BYPASSING

Duranbah Beach



2 October 2019



9 January 2020



26 March 2020

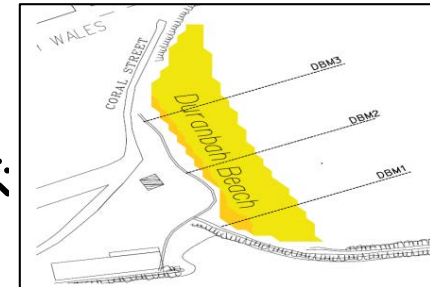
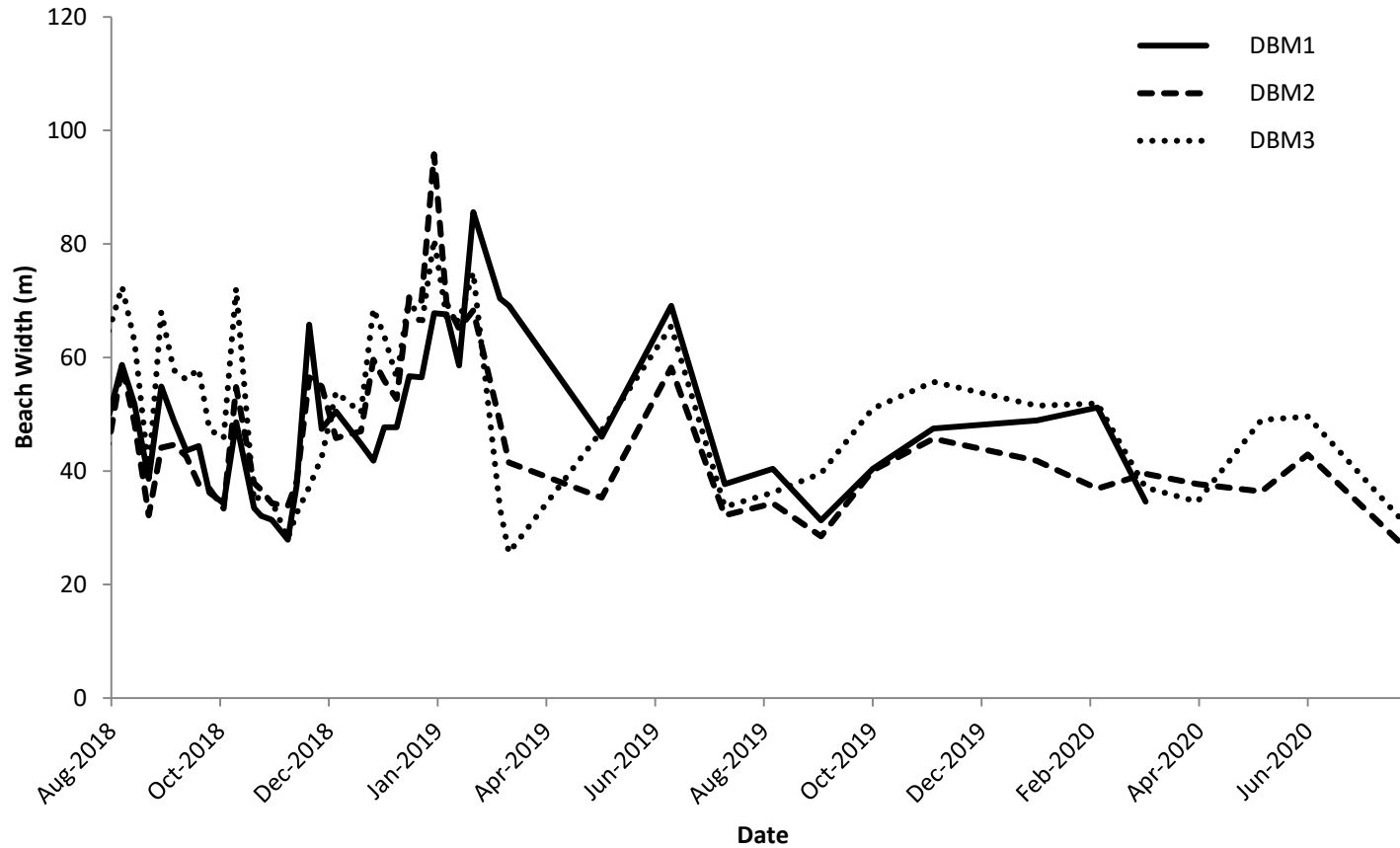


22 June 2020

Restoring Coastal Sand Drift - Improving Boating Access

TWEED SAND BYPASSING

Duranbah – Beach width Aug 2018 to Aug 2020



Restoring Coastal Sand Drift - Improving Boating Access

TWEED SAND BYPASSING

Snapper Rocks / Rainbow Bay

9 January 2020



26 March 2020



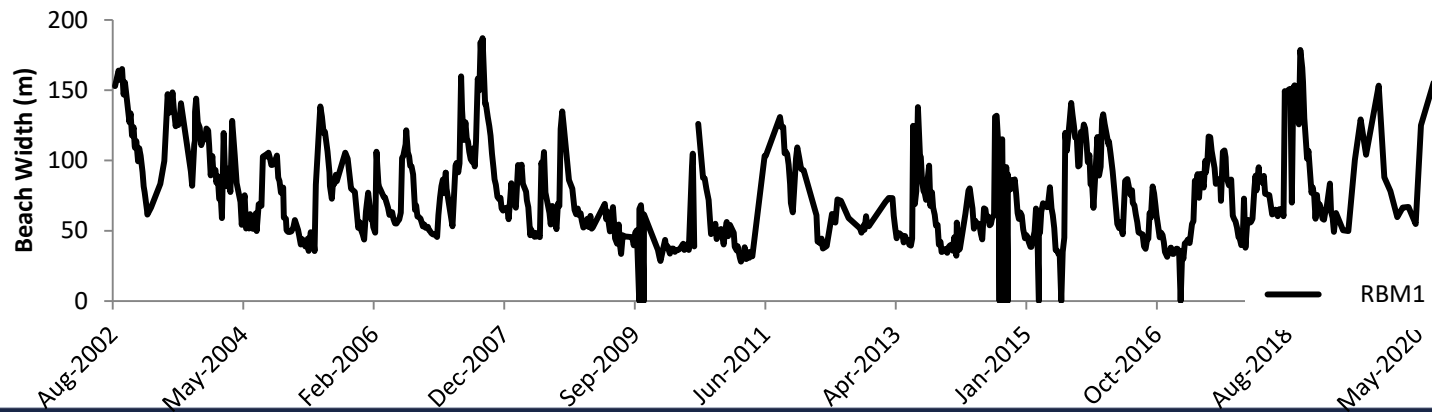
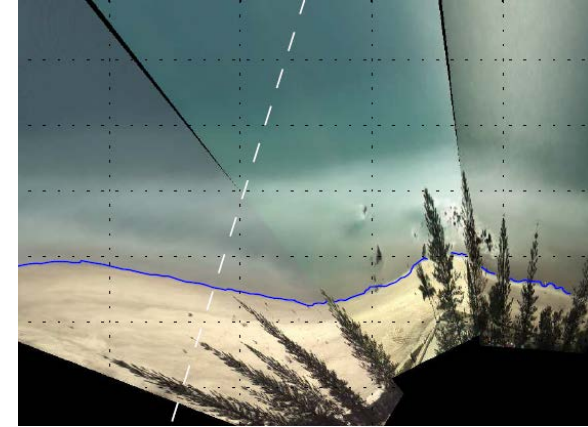
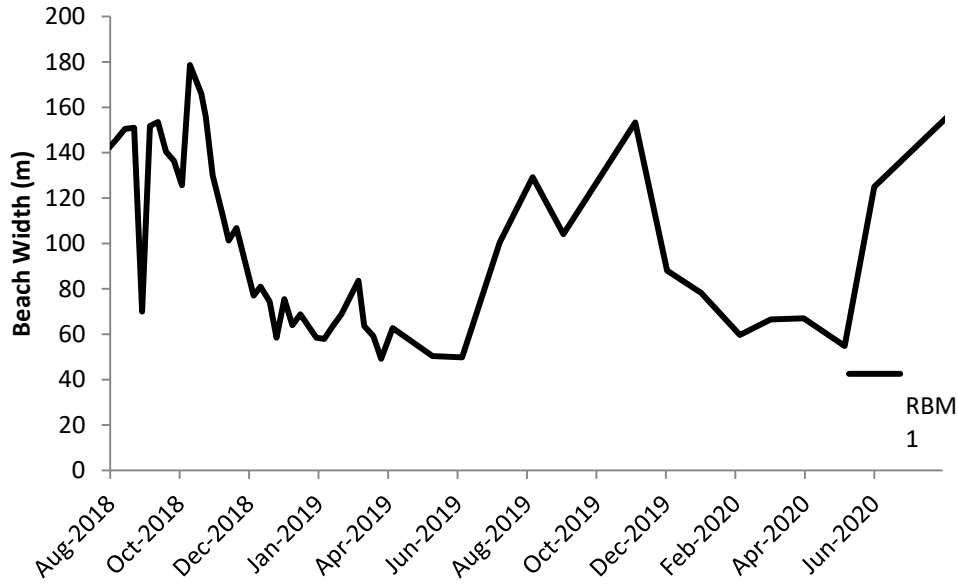
22 June 2020



Restoring Coastal Sand Drift - Improving Boating Access

TWEED SAND BYPASSING

Rainbow Bay – Beach width Aug 2018 to Aug 2020



Restoring Coastal Sand Drift - Improving Boating Access

TWEED SAND BYPASSING



22 June 2020

Restoring Coastal Sand Drift - Improving Boating Access

TWEED SAND BYPASSING

Coolangatta Bay



9 January 2020



26 March 2020

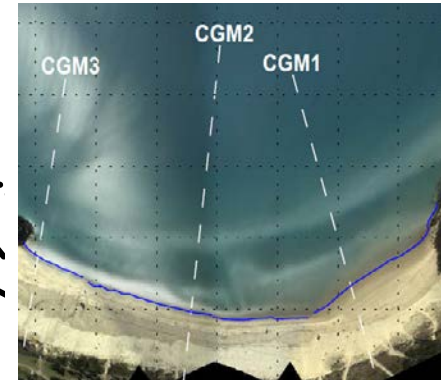
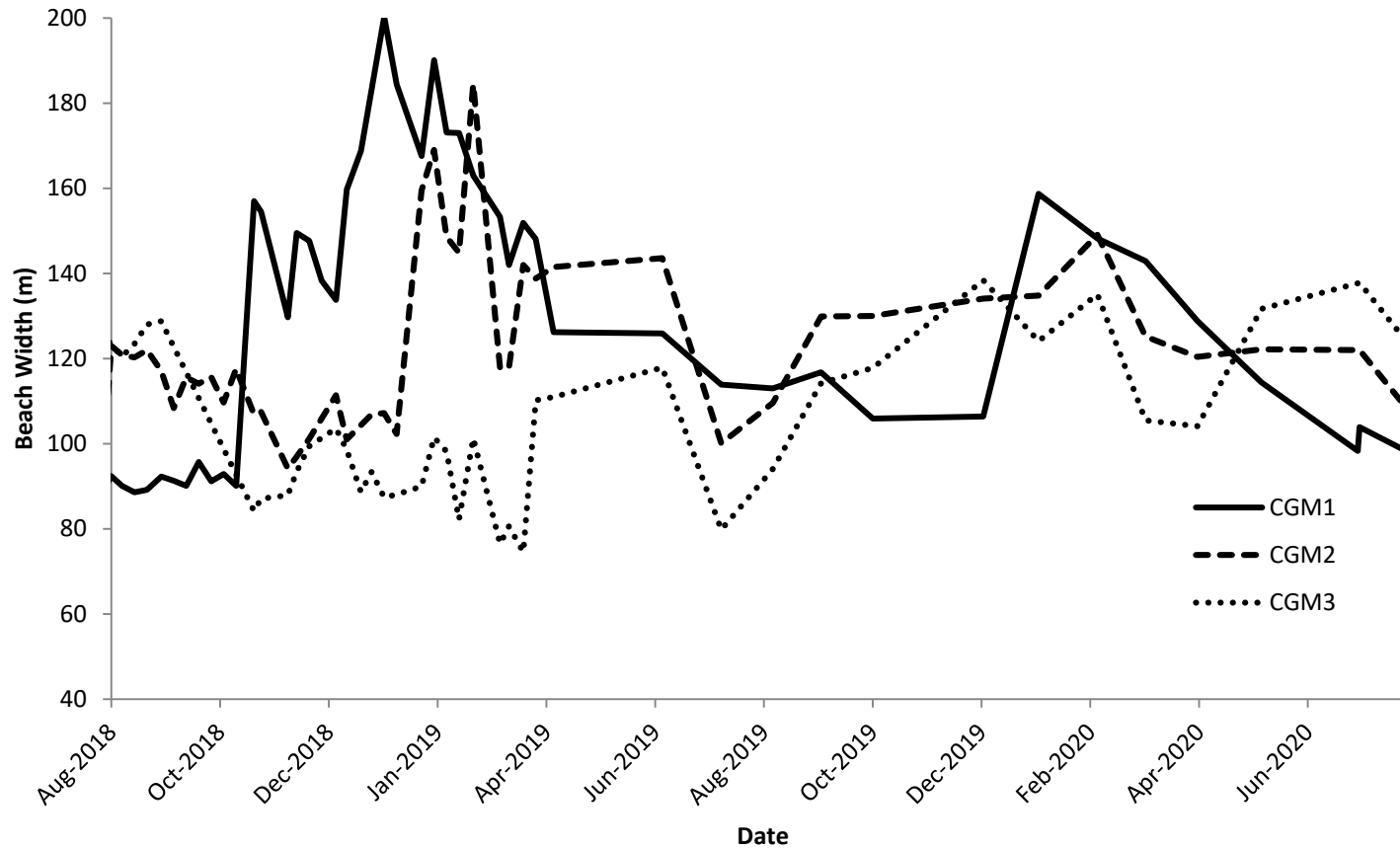


22 June 2020

Restoring Coastal Sand Drift - Improving Boating Access

TWEED SAND BYPASSING

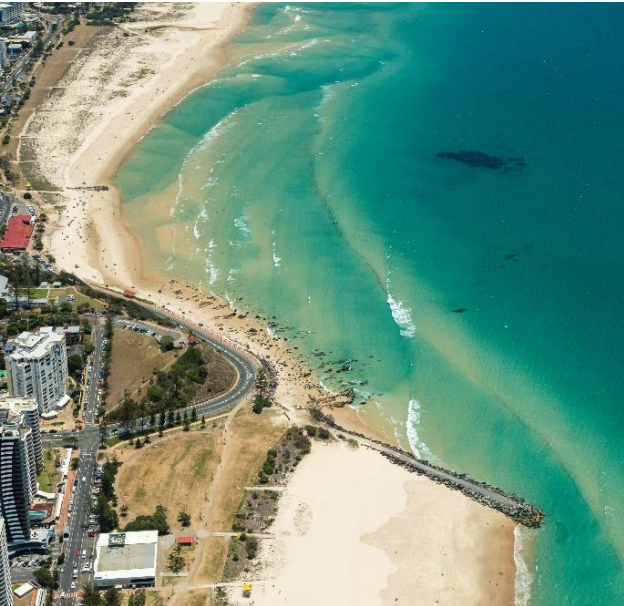
Coolangatta – Beach width Aug 2018 to Aug 2020



Restoring Coastal Sand Drift - Improving Boating Access

TWEED SAND BYPASSING

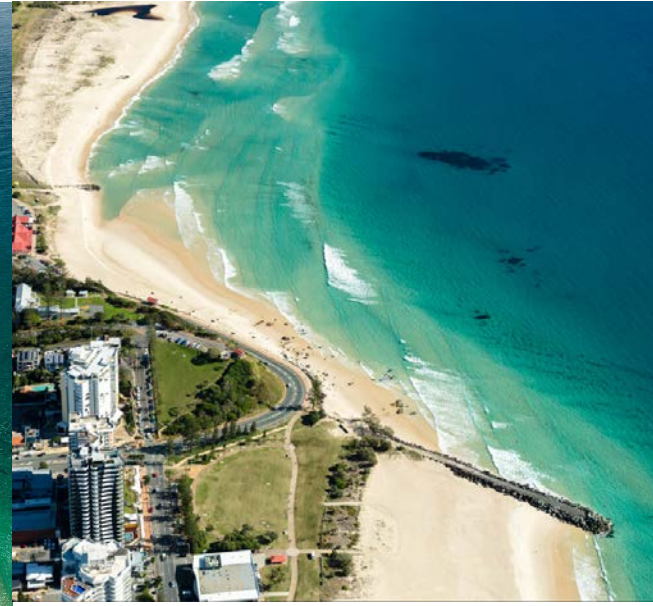
Kirra / Nth Kirra



9 January 2020



26 March 2020

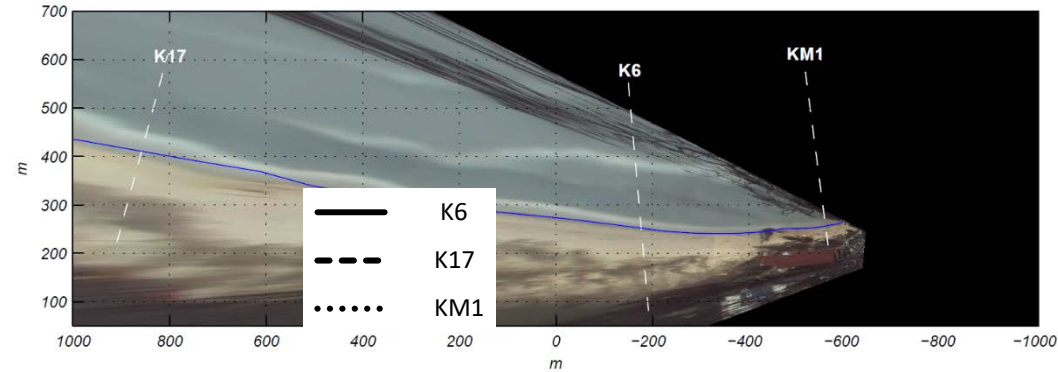
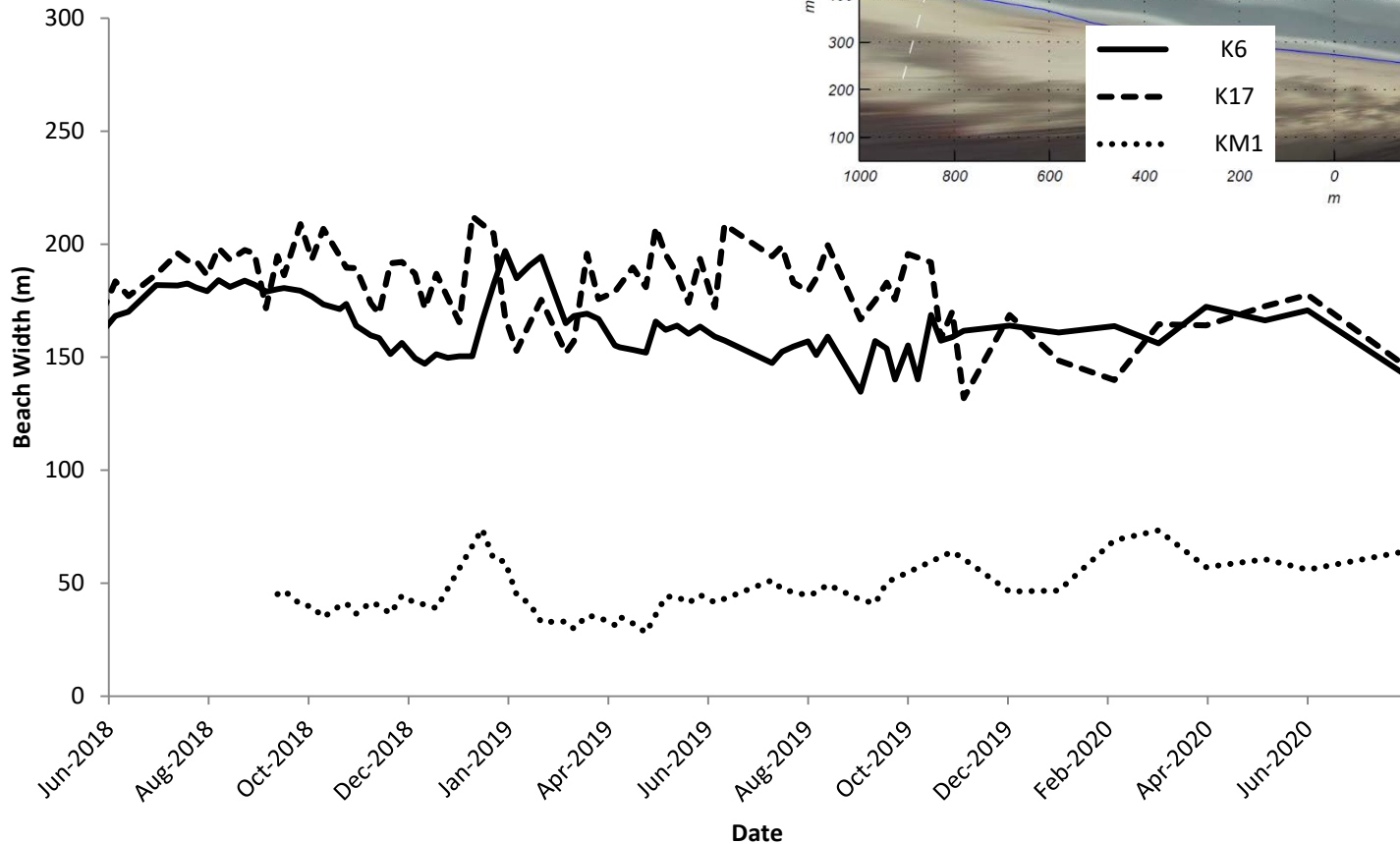


22 June 2020

Restoring Coastal Sand Drift - Improving Boating Access

TWEED SAND BYPASSING

Kirra – Beach width Aug 2018 to Aug 2020



Restoring Coastal Sand Drift - Improving Boating Access

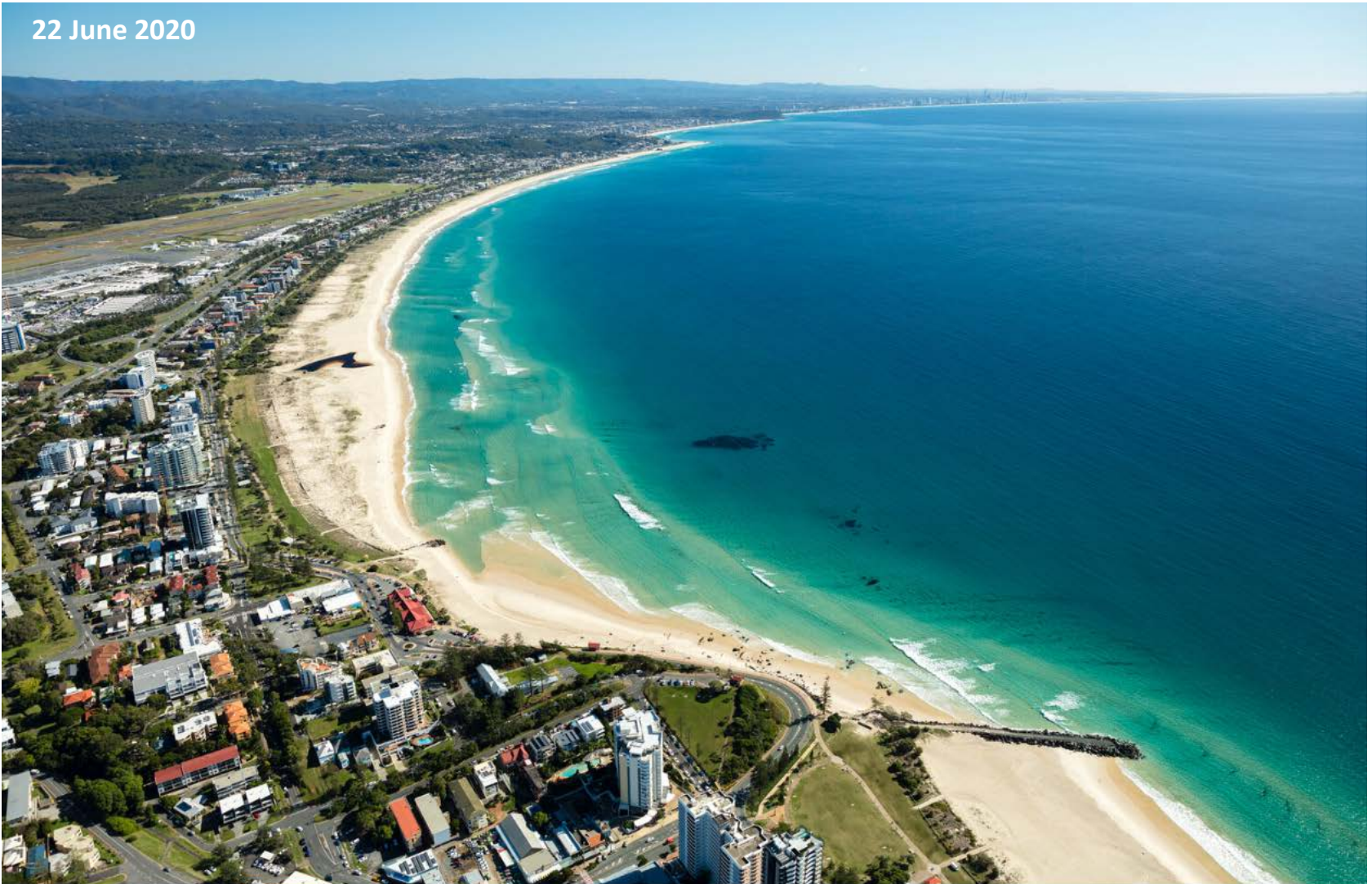
TWEED SAND BYPASSING



Restoring Coastal Sand Drift - Improving Boating Access

TWEED SAND BYPASSING

22 June 2020



Restoring Coastal Sand Drift - Improving Boating Access

TWEED SAND BYPASSING

22 June 2020



Restoring Coastal Sand Drift - Improving Boating Access

TWEED SAND BYPASSING

22 June 2020



Restoring Coastal Sand Drift - Improving Boating Access

TWEED SAND BYPASSING

22 June 2020



Restoring Coastal Sand Drift - Improving Boating Access

TWEED SAND BYPASSING

Duranbah

Quality banks at Duranbah, especially
against the southern wall



Photo: Youtube
August 2020



Photo: Surfonmars
August 2020

Restoring Coastal Sand Drift - Improving Boating Access

TWEED SAND BYPASSING



Snapper Rocks

Snapper has had high performance banks since mid March

**Photo: Surfonmars
July and August 2020**



Restoring Coastal Sand Drift - Improving Boating Access

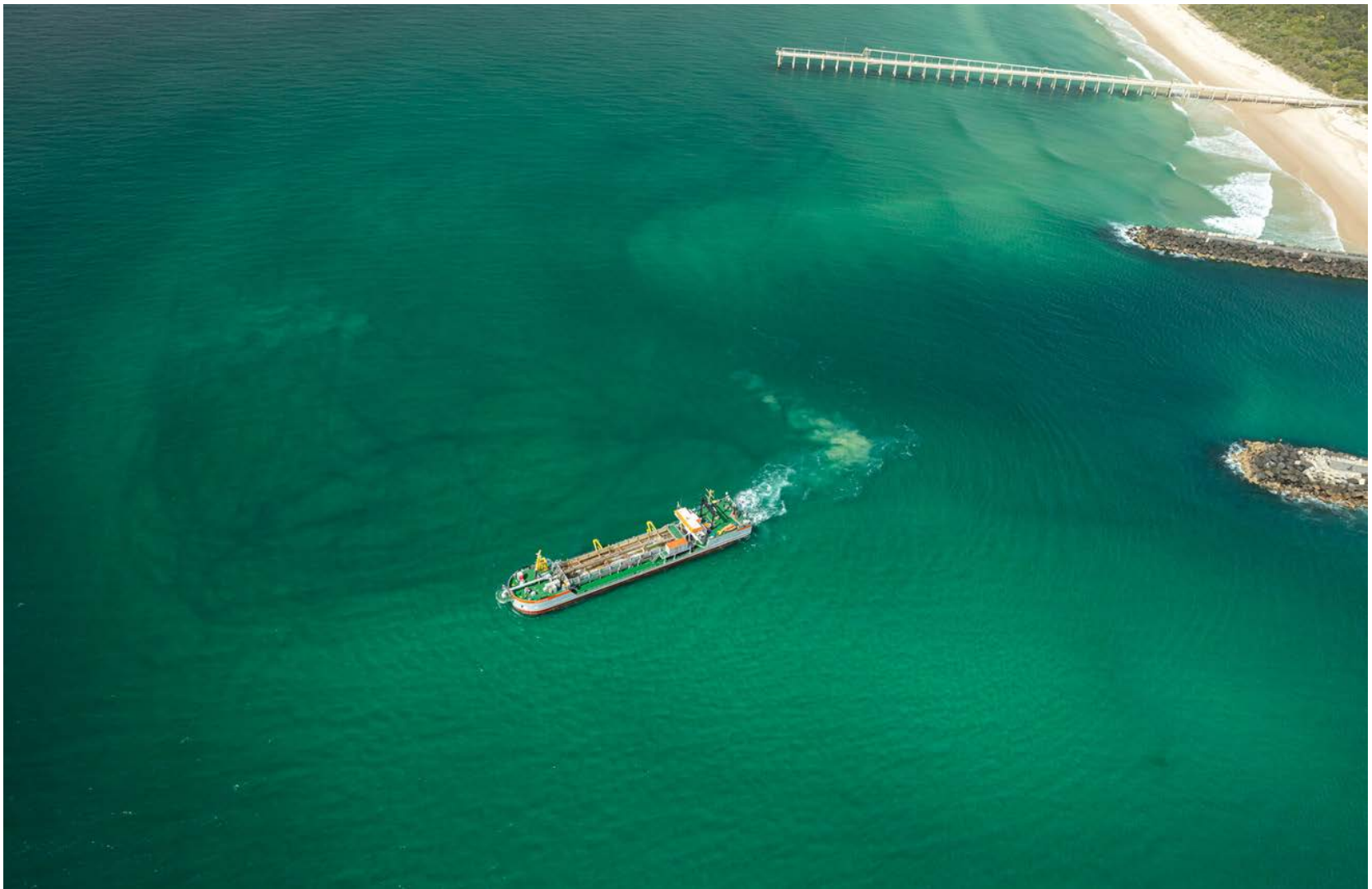
Coastal Imaging

Restoring Coastal Sand Drift - Improving Boating Access

Entrance conditions, usage and survey

TWEEDSAND
BYPASSING

TWEED SAND BYPASSING



Restoring Coastal Sand Drift - Improving Boating Access

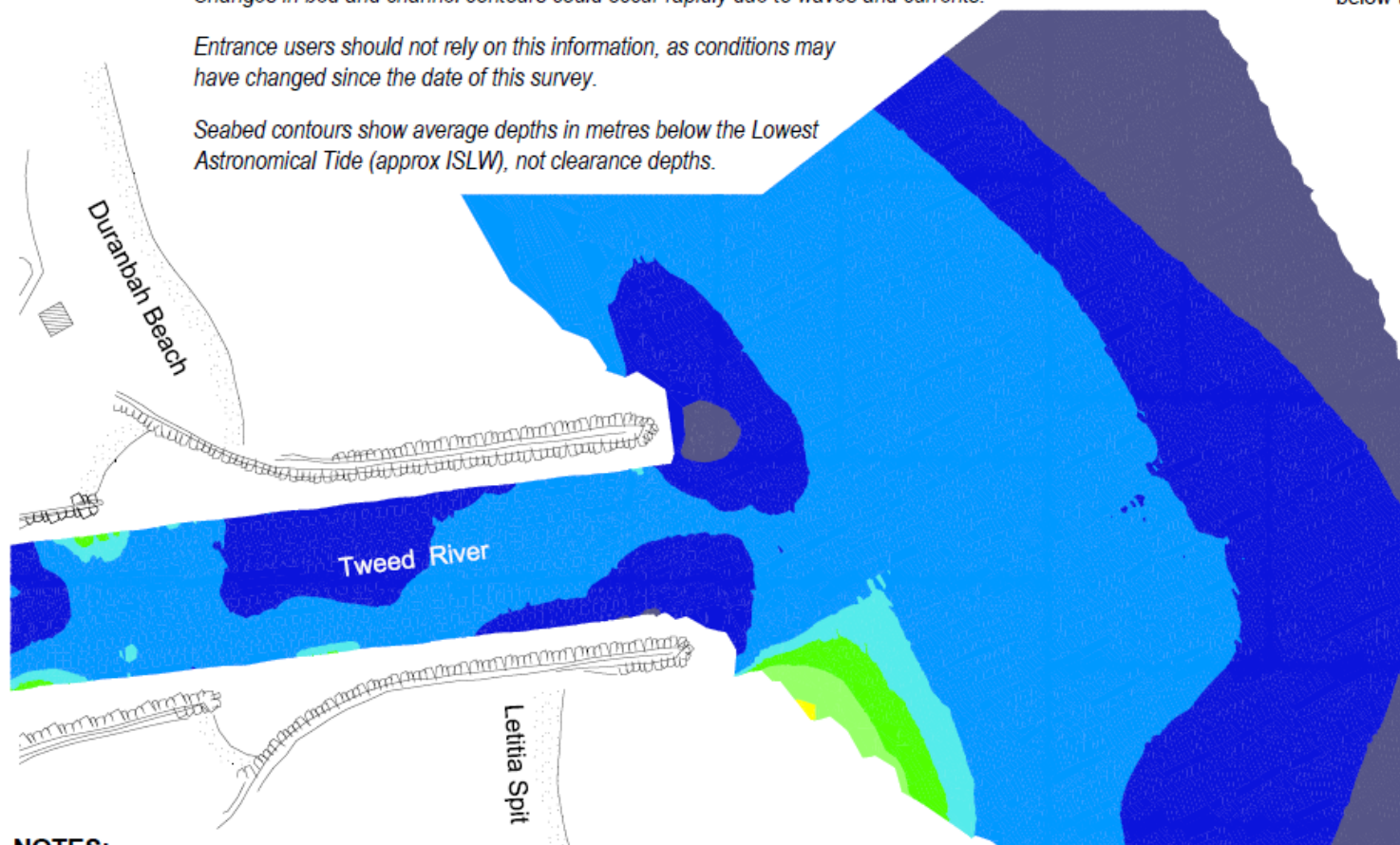
TWEED RIVER ENTRANCE AS AT 27 FEBRUARY 2020

WARNINGS: *Extreme caution should be used when navigating this entrance.*

Changes in bed and channel contours could occur rapidly due to waves and currents.

Entrance users should not rely on this information, as conditions may have changed since the date of this survey.

Seabed contours show average depths in metres below the Lowest Astronomical Tide (approx ISLW), not clearance depths.



LEGEND

Average Depths in metres
below the Lowest Astronomical Tide

Less than 1.0m
1.0 to 2.0m
2.0 to 3.0m
3.0 to 3.5m
3.5 to 4.0m
4.0 to 6.0m
6.0 to 8.0m
More than 8.0m



Scan here with
a QR code
reader app to
view the latest
seabed map
online



0 100 200
Metres

NOTES:

1. Survey information collected by Michel Group Services 27 February 2020.
2. Survey drawing prepared by Hydrosphere Consulting 3 March 2020.
3. Surveys are undertaken for Tweed Sand Bypassing every three months to monitor entrance seabed levels.



TWEED SAND BYPASSING

Tweed Sand Bypassing is a joint project of the New South Wales and Queensland Governments, with the support of the Gold Coast City Council, and in conjunction with Tweed Shire Council.



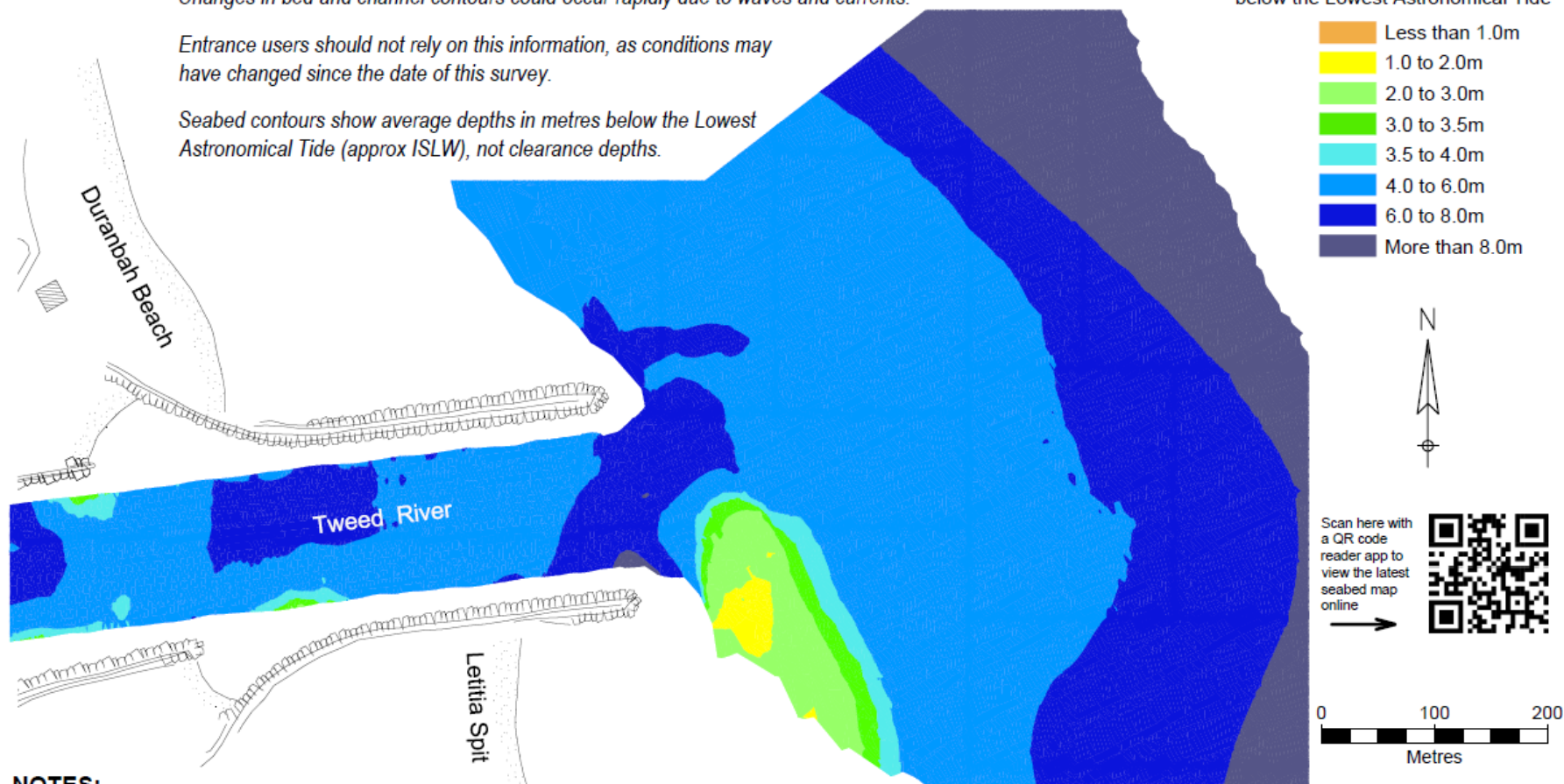
TWEED RIVER ENTRANCE AS AT 26 MARCH 2020

WARNINGS: *Extreme caution should be used when navigating this entrance.*

Changes in bed and channel contours could occur rapidly due to waves and currents.

Entrance users should not rely on this information, as conditions may have changed since the date of this survey.

Seabed contours show average depths in metres below the Lowest Astronomical Tide (approx ISLW), not clearance depths.



NOTES:

1. Survey information collected by Michel Group Services 23 and 26 March 2020.
2. Survey drawing prepared by Hydrosphere Consulting 1 April 2020.
3. Surveys are undertaken for Tweed Sand Bypassing every three months to monitor entrance seabed levels.



TWEED SAND BYPASSING

Tweed Sand Bypassing is a joint project of the New South Wales and Queensland Governments, with the support of the Gold Coast City Council, and in conjunction with Tweed Shire Council.



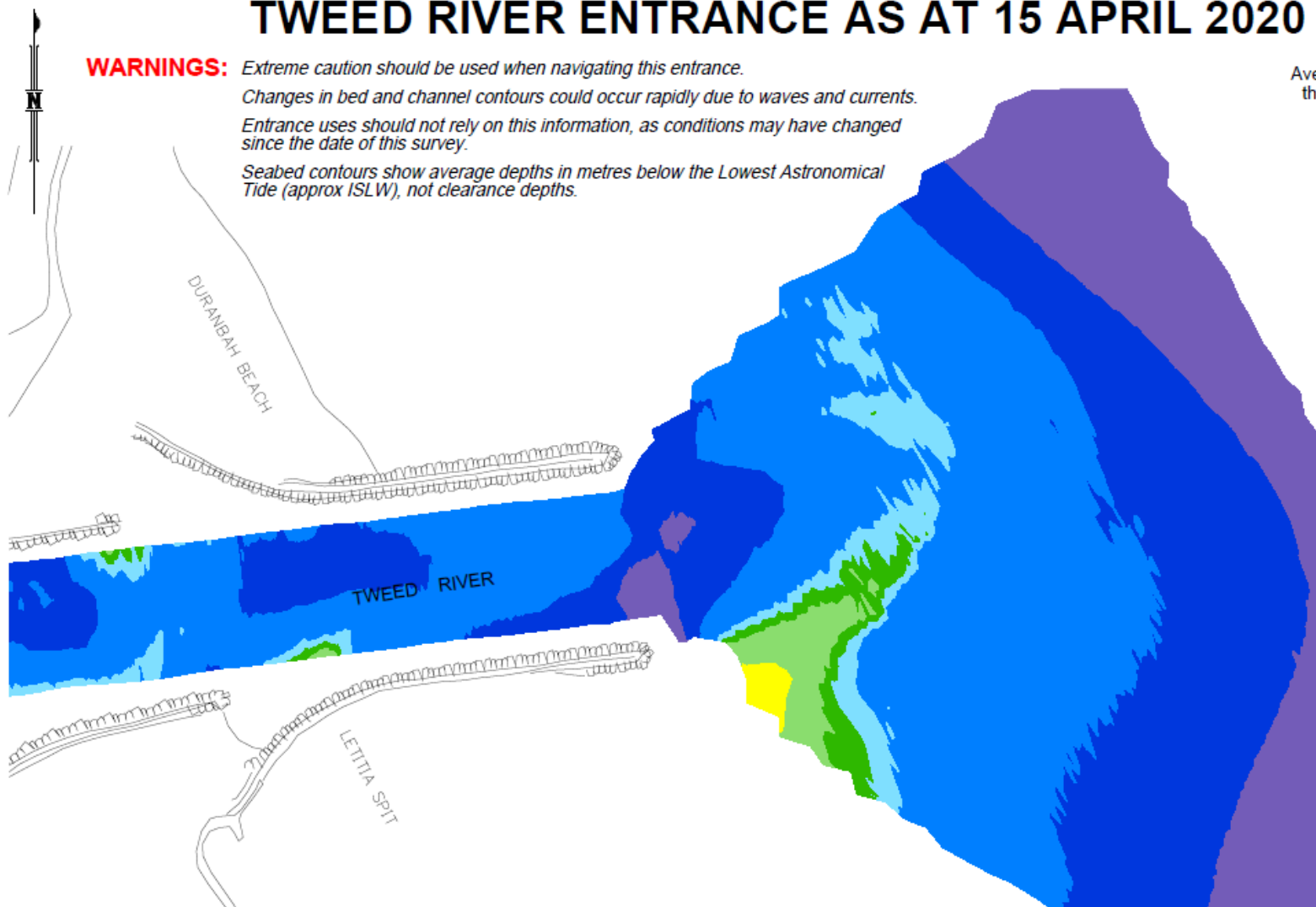
TWEED RIVER ENTRANCE AS AT 15 APRIL 2020

WARNINGS: *Extreme caution should be used when navigating this entrance.*
Changes in bed and channel contours could occur rapidly due to waves and currents.
Entrance uses should not rely on this information, as conditions may have changed since the date of this survey.
Seabed contours show average depths in metres below the Lowest Astronomical Tide (approx ISLW), not clearance depths.

LEGEND

Average Depths in meters below the Lowest Astronomical Tide

Orange	Less Than 1.0m
Yellow	1.0 to 2.0m
Light Green	2.0 to 3.0m
Green	3.0 to 3.5m
Light Blue	3.5 to 4.0m
Blue	4.0 to 6.0m
Dark Blue	6.0 to 8.0m
Purple	More than 8.0m



NOTES:

1. Survey information collected by Michel Group Services on 15th April 2020.
2. This plan prepared by Michel Group Services on 23rd April 2020.
3. Surveys are undertaken for Tweed Sand Bypassing every three months to monitor entrance seabed levels.



Planning,
Industry &
Environment

TWEED SAND BYPASSING

Tweed Sand bypassing is a joint project of the New South Wales and Queensland Governments, with the support of the Gold Coast City Council, and in conjunction with Tweed Shire Council.

Meters

0 50 100 150 200



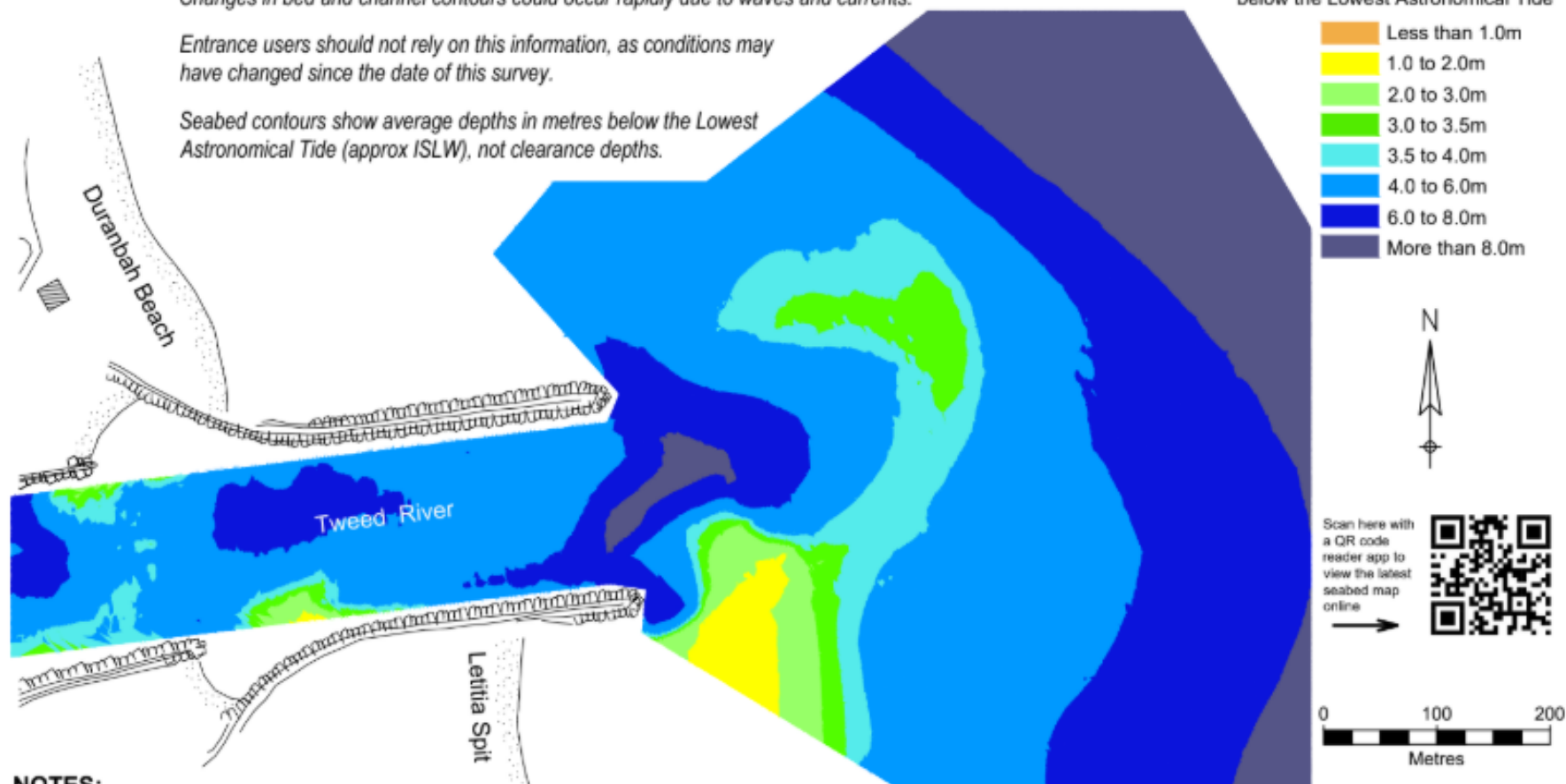
TWEED RIVER ENTRANCE AS AT 28 MAY 2020

WARNINGS: *Extreme caution should be used when navigating this entrance.*

Changes in bed and channel contours could occur rapidly due to waves and currents.

Entrance users should not rely on this information, as conditions may have changed since the date of this survey.

Seabed contours show average depths in metres below the Lowest Astronomical Tide (approx ISLW), not clearance depths.



NOTES:

1. Survey information collected by Michel Group Services 28 May 2020.
2. Survey drawing prepared by Hydrosphere Consulting 21 June 2020.
3. Surveys are undertaken for Tweed Sand Bypassing every three months to monitor entrance seabed levels.



TWEED SAND BYPASSING

Tweed Sand Bypassing is a joint project of the New South Wales and Queensland Governments, with the support of the Gold Coast City Council, and in conjunction with Tweed Shire Council.



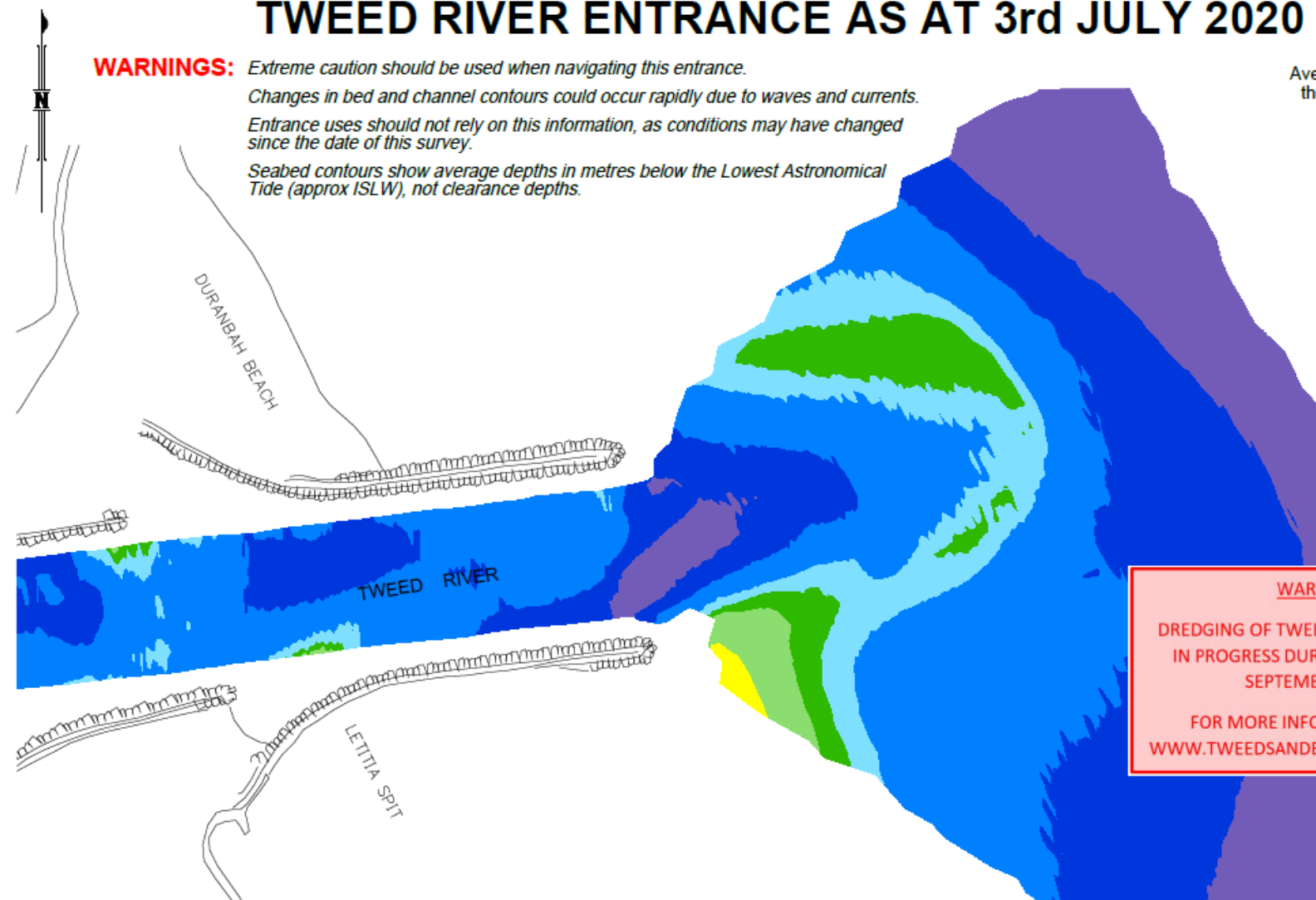
TWEED RIVER ENTRANCE AS AT 3rd JULY 2020

WARNINGS: *Extreme caution should be used when navigating this entrance.*
Changes in bed and channel contours could occur rapidly due to waves and currents.
Entrance uses should not rely on this information, as conditions may have changed since the date of this survey.
Seabed contours show average depths in metres below the Lowest Astronomical Tide (approx ISLW), not clearance depths.

LEGEND

Average Depths in meters below the Lowest Astronomical Tide

Orange	Less Than 1.0m
Yellow	1.0 to 2.0m
Light Green	2.0 to 3.0m
Green	3.0 to 3.5m
Light Blue	3.5 to 4.0m
Blue	4.0 to 6.0m
Dark Blue	6.0 to 8.0m
Purple	More than 8.0m



WARNING

DREDGING OF TWEED RIVER ENTRANCE
IN PROGRESS DURING AUGUST AND
SEPTEMBER 2020.

FOR MORE INFORMATION VISIT
WWW.TWEEDSANDBYPASS.NSW.GOV.AU

NOTES:

1. Survey information collected by Michel Group Services on 2nd & 3rd JULY 2020.
2. This plan prepared by Michel Group Services on 9th JULY 2020.
3. Surveys are undertaken for Tweed Sand Bypassing every three months to monitor entrance seabed levels.

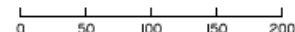


Transport
for NSW

TWEED SAND BYPASSING

Tweed Sand bypassing is a joint project of the New South Wales and Queensland Governments, with the support of the Gold Coast City Council, and in conjunction with Tweed Shire Council.

Meters



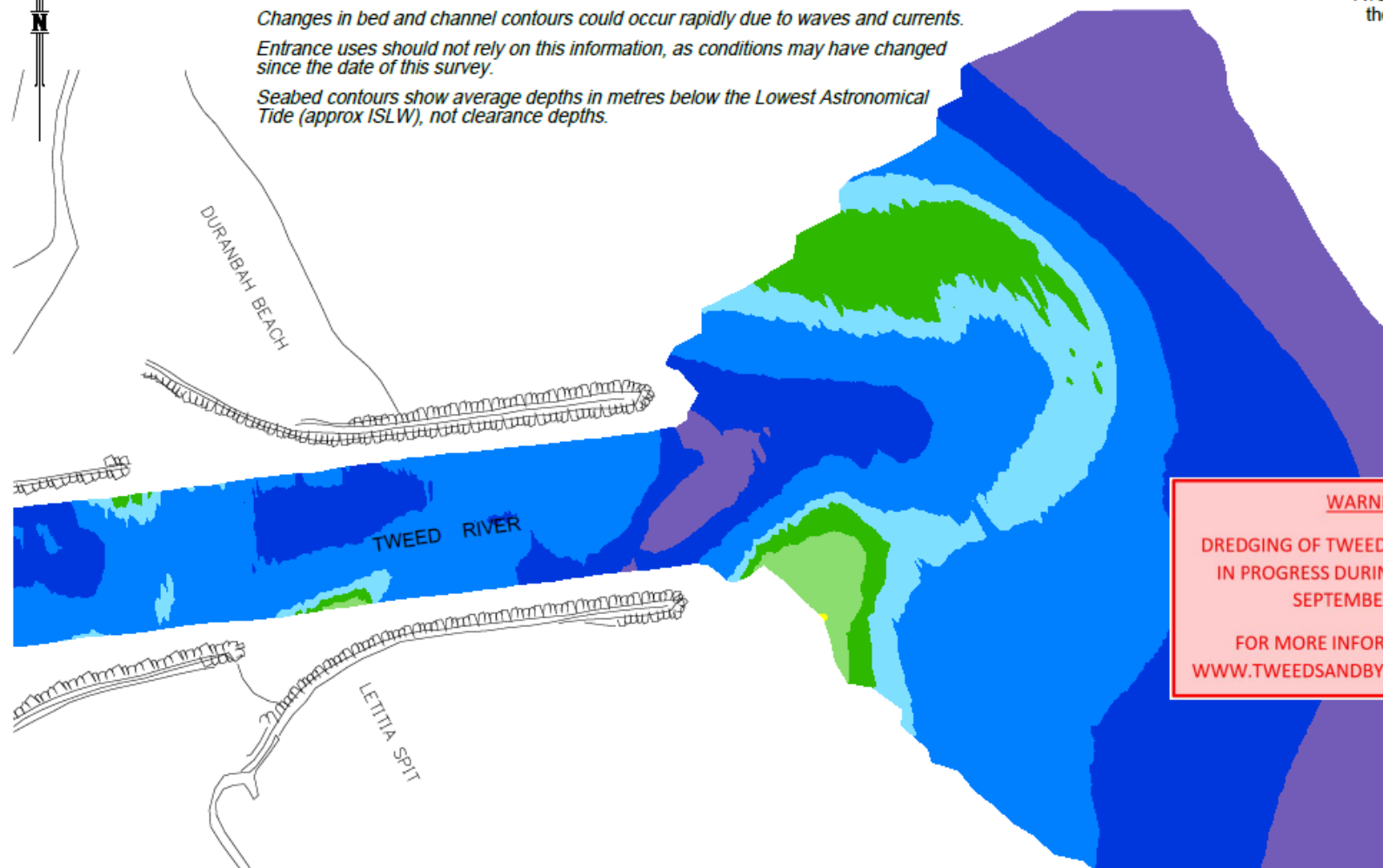
TWEED RIVER ENTRANCE AS AT 29th JULY 2020

WARNINGS: *Extreme caution should be used when navigating this entrance.
Changes in bed and channel contours could occur rapidly due to waves and currents.
Entrance uses should not rely on this information, as conditions may have changed since the date of this survey.
Seabed contours show average depths in metres below the Lowest Astronomical Tide (approx ISLW), not clearance depths.*

LEGEND

Average Depths in meters below the Lowest Astronomical Tide

Orange	Less Than 1.0m
Yellow	1.0 to 2.0m
Light Green	2.0 to 3.0m
Green	3.0 to 3.5m
Light Blue	3.5 to 4.0m
Blue	4.0 to 6.0m
Dark Blue	6.0 to 8.0m
Purple	More than 8.0m



WARNING

DREDGING OF TWEED RIVER ENTRANCE
IN PROGRESS DURING AUGUST AND
SEPTEMBER 2020.

FOR MORE INFORMATION VISIT
WWW.TWEEDSANDBYPASS.NSW.GOV.AU

TWEED SAND BYPASSING

Tweed Sand bypassing is a joint project of the New South Wales and Queensland Governments, with the support of the Gold Coast City Council, and in conjunction with Tweed Shire Council.

Meters
0 50 100 150 200



Queensland
Government



Transport
for NSW

NOTES:

1. Survey information collected by Michel Group Services on 29th JULY 2020.
2. This plan prepared by Michel Group Services on 31th JULY 2020.
3. Surveys are undertaken for Tweed Sand Bypassing every three months to monitor entrance seabed levels.

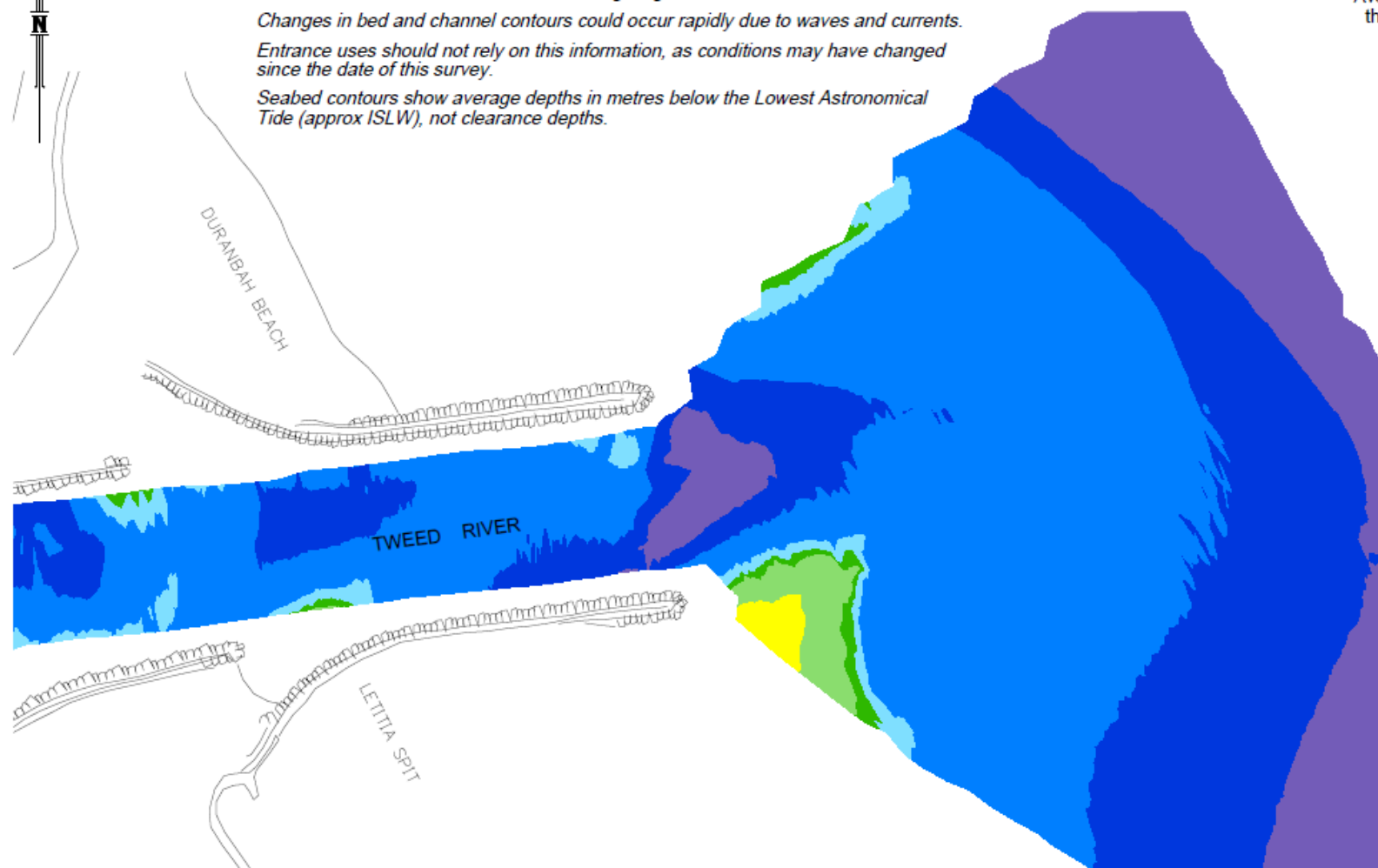
TWEED RIVER ENTRANCE AS AT 28th AUGUST 2020

WARNINGS: *Extreme caution should be used when navigating this entrance.*
Changes in bed and channel contours could occur rapidly due to waves and currents.
Entrance uses should not rely on this information, as conditions may have changed since the date of this survey.
Seabed contours show average depths in metres below the Lowest Astronomical Tide (approx ISLW), not clearance depths.

LEGEND

Average Depths in meters below the Lowest Astronomical Tide

Orange	Less Than 1.0m
Yellow	1.0 to 2.0m
Light Green	2.0 to 3.0m
Green	3.0 to 3.5m
Light Blue	3.5 to 4.0m
Blue	4.0 to 6.0m
Dark Blue	6.0 to 8.0m
Purple	More than 8.0m



NOTES:

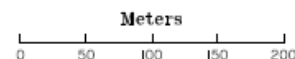
1. Survey information collected by Michel Group Services on 28th AUGUST 2020.
2. This plan prepared by Michel Group Services on 2nd SEPTEMBER 2020.
3. Surveys are undertaken for Tweed Sand Bypassing every three months to monitor entrance seabed levels.



Planning,
Industry &
Environment

TWEED SAND BYPASSING

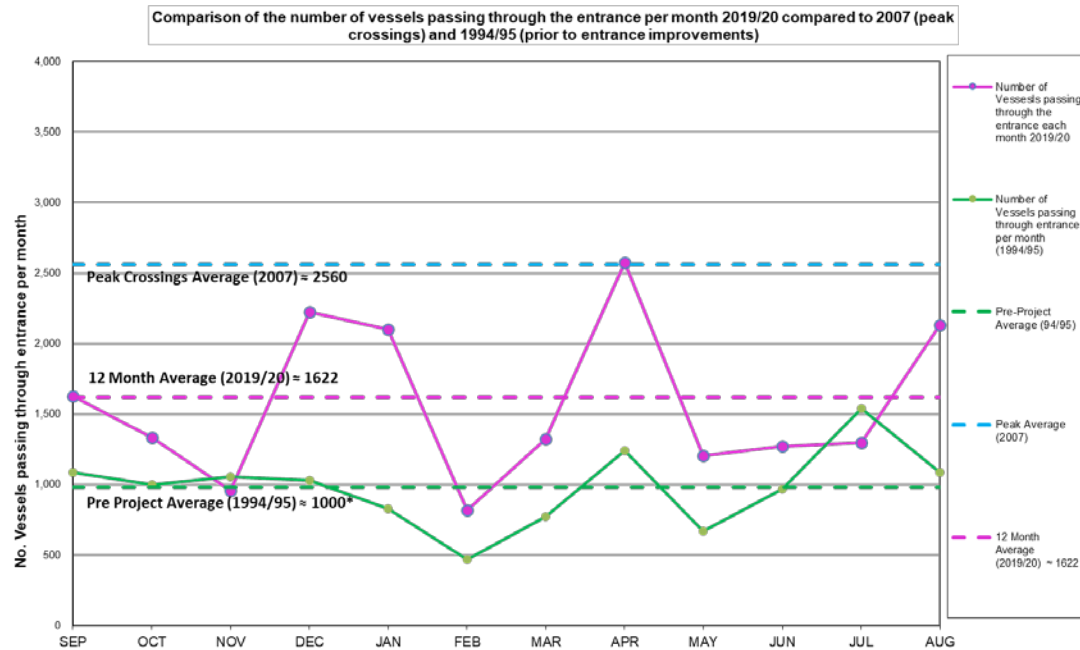
Tweed Sand bypassing is a joint project of the New South Wales and Queensland Governments, with the support of the Gold Coast City Council, and in conjunction with Tweed Shire Council.



TWEED SAND BYPASSING

Tweed River Entrance Usage August 2020

Date August 2020	Navigation Rating					Number of Crossings
	Impassable <-----> Good					
	Impassable	Difficulty Encountered	Some Difficulty Encountered	Relatively Good Crossing	Good Conditions	
	1	2	3	4	5	
1						0
2						72
3						119
4						51
5						36
6						102
7						8
8						16
9						148
10						25
11						2
12						24
13						22
14						104
15						13
16						169
17						133
18						159
19						16
20						8
21						80
22						54
23						109
24						108
25						64
26						17
27						81
28						120
29						31
30						169
31						72
					Total:	2,132



*Note 1 - Assuming the number of incoming boats = outgoing boats in 94/95

Projects and Enhancements

TWEEDSAND
BYPASSING
—

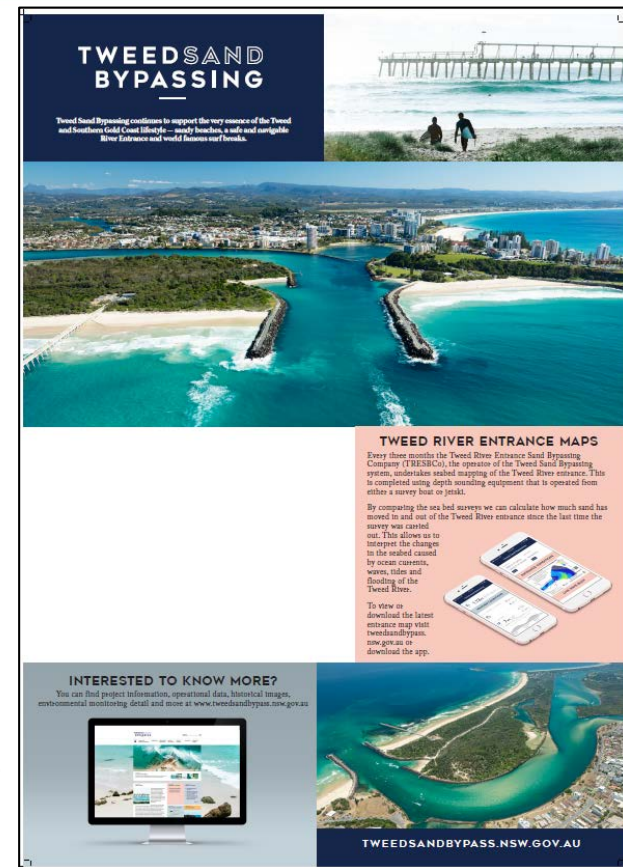
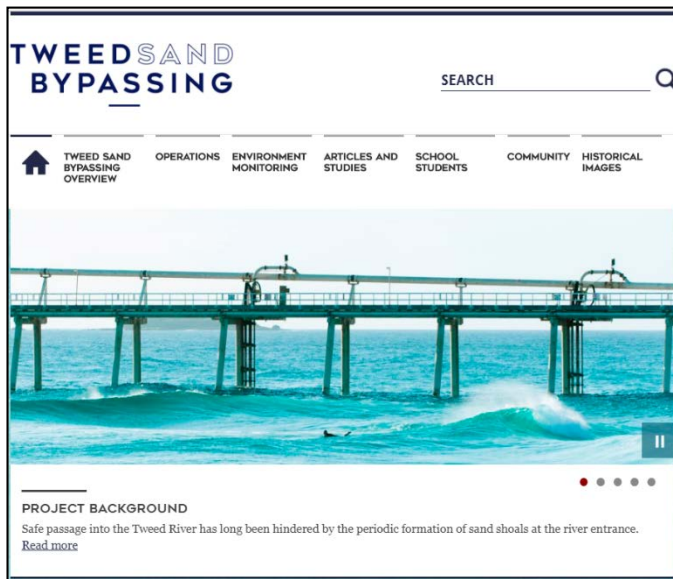
Projects

- TSB Transition – Phase 1 investigations are complete, Phase 2 underway.
- Kirra Reef Monitoring nearing completion (field work complete).
- Duranbah Access Pit – under construction.
- LTA report nearing completion.
- Letitia Coastal Processes Study – coordination with Tweed Shire Council.

Communications

TWEEDSAND
BYPASSING
—

TWEEDSAND BYPASSING



- Fingal story map uploaded to webpage.
- A new signboard has been installed at Fingal boat ramp.
- A revised schools package has been uploaded to the website.
- During dredging the TSB app and web was updated to have a link to a vessel tracking website (marinetraffic.com).
- Website continues to be updated. Significant revision of some pages already complete.
- Approximately 18 Instagram posts were used during the recent dredge campaign

Restoring Coastal Sand Drift - Improving Boating Access

TWEED SAND BYPASSING

Instagram

Search

Log In

Sign Up



tweedsandbypassing

Follow

281 posts 589 followers 248 following

Tweed Sand Bypassing

Follow us here or on our IOS/Android Apps for interesting facts on the Tweed Sand Bypassing project and the beautiful coastal environment 🌊

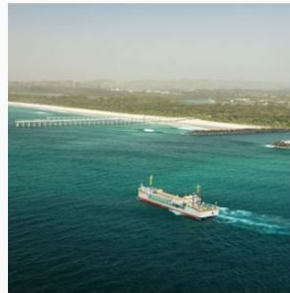
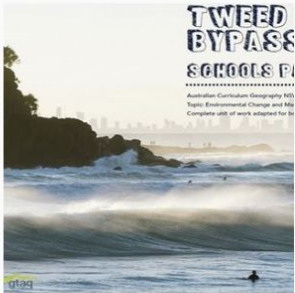
www.tweedsandbypass.nsw.gov.au



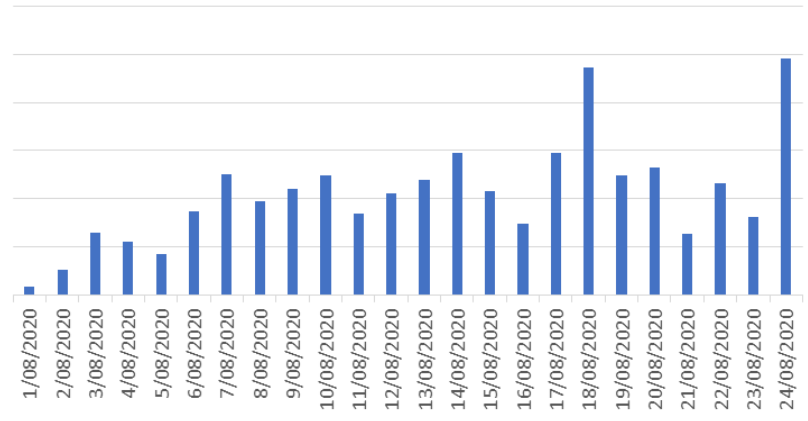
Surf

POSTS

TAGGED



TSB page visits (avg approx 100 per day)



Most Popular pages:

- Dredging
- Background information
- Schools package

Instagram posts generally
well received

Restoring Coastal Sand Drift - Improving Boating Access