

TRESBP ENVIRONMENTAL MONITORING SUMMARY

NOVEMBER 2011

OVERVIEW

In November, 2011:

- An information evening was held on 2 November regarding the recently released reports into feasibility option studies for enhanced project operation. TRESBP sought community feedback on the options up to 30 November.
- 5,174 m³ of sand was pumped to Snapper Rocks East and 4,541 m³ of sand was pumped to Duranbah Beach.
- There were four media articles relating to the project. These related to the option studies for enhanced system operations.
- Sea conditions were calm to average for most of the month with a short lived moderate sea state on the 1st. During November significant wave heights ranged mostly from 0.5 to 1.3 m).
- 1,978 boats crossings were recorded for the month (this is about 14% more than the November average).
- The estimated amount of sand moving north towards the Tweed River Entrance by natural processes is in the order of 10,000 m³ (this is less than one third of the November average).

1. SAND PUMPING & DREDGING

Sand Delivery November 2011

Pumped:	9,175 m ³
Dredged:	0 m ³
Total:	9,715 m ³

Sand Delivery January to November 2011 (YTD)

Pumped:	478,356 m ³
Dredged:	0 m ³
Total:	478,356 m ³

Sand Delivery January to November 2010

Pumped:	380,234 m ³
Dredged:	0 m ³
Total:	380,234 m ³

Stage II Sand Delivery May 2000 to November 2011

Pumped:	6,289,094 m ³
Dredged:	2,038,900 m ³
Total:	8,327,995 m ³



Department of **Environment**
and **Resource Management**

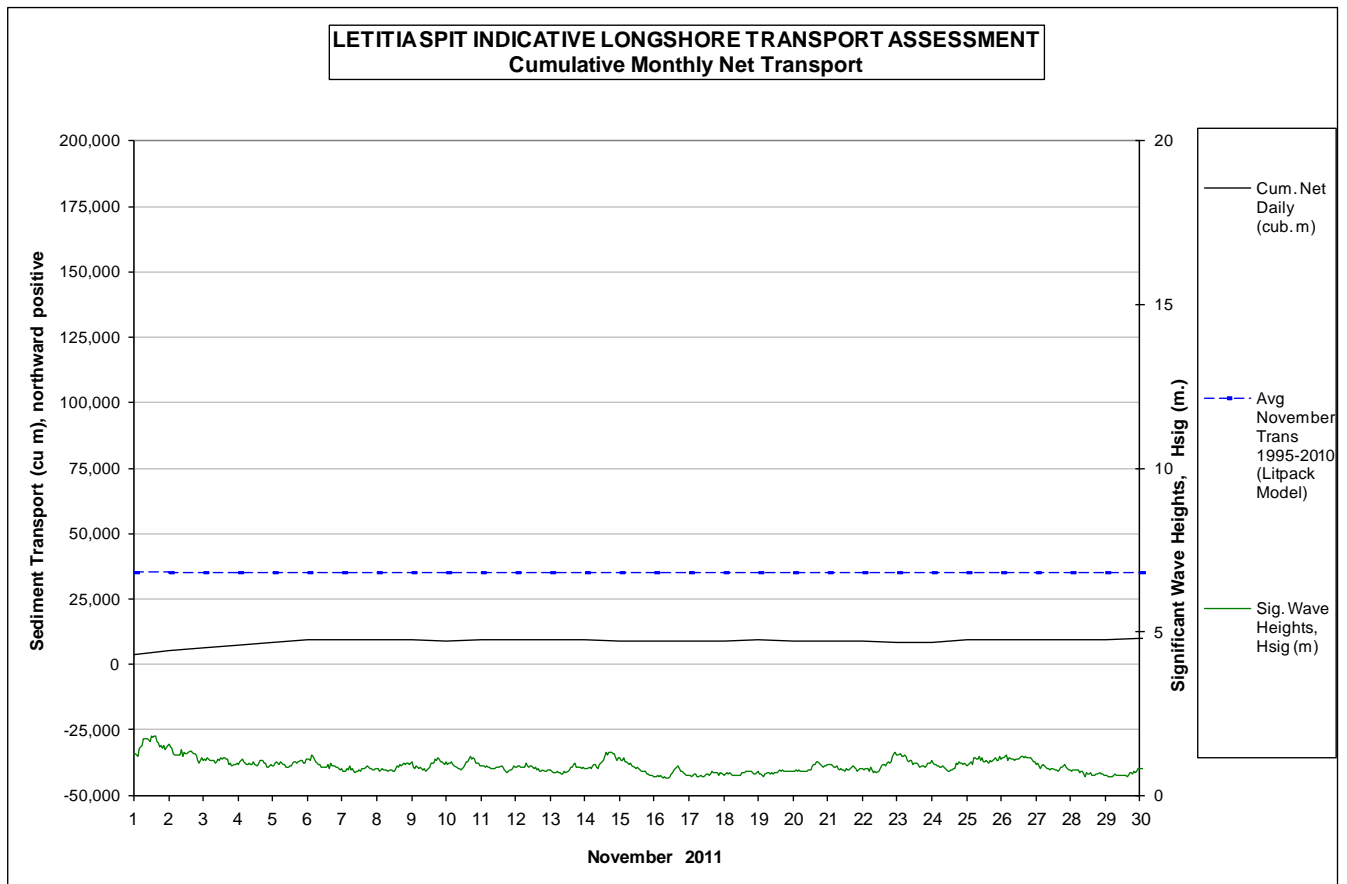


2. INDICATIVE LONGSHORE TRANSPORT

The graph below is based on simplified sediment transport modelling and is indicative only.

In November 2011 the estimated natural sand transport (moving N towards Tweed entrance): to be in the order of 10,000 m³.

This result is less than one third of the average sand transport quantity for the month of November (ie about 30% of the average).



3. MEDIA COVERAGE

Daily News, 4 November, 2011, “Reviving Kirra ‘expensive’”

“Four options for enhancing the Tweed River Entrance sand Bypassing Project are being considered by the public.”.....

Daily News, 4 November, 2011

“Recently the Queensland Government announced a detailed study from the Tweed River Entrance Sand Bypassing Project (TRESBP) outlining the sand flow and management of the system and venturing four options for the public to consider”.....

Gold Coast Mail, 10 November, 2011, “Shifting sands publicly debated”

“Four options for enhancing the Tweed River Entrance sand Bypassing Project are being considered by the public.”


Option one is.....

www.goldcoast.com.au, 10 November, 2011

“Four options are on the table for improving Tweed River access and fixing Kirra Beach”....

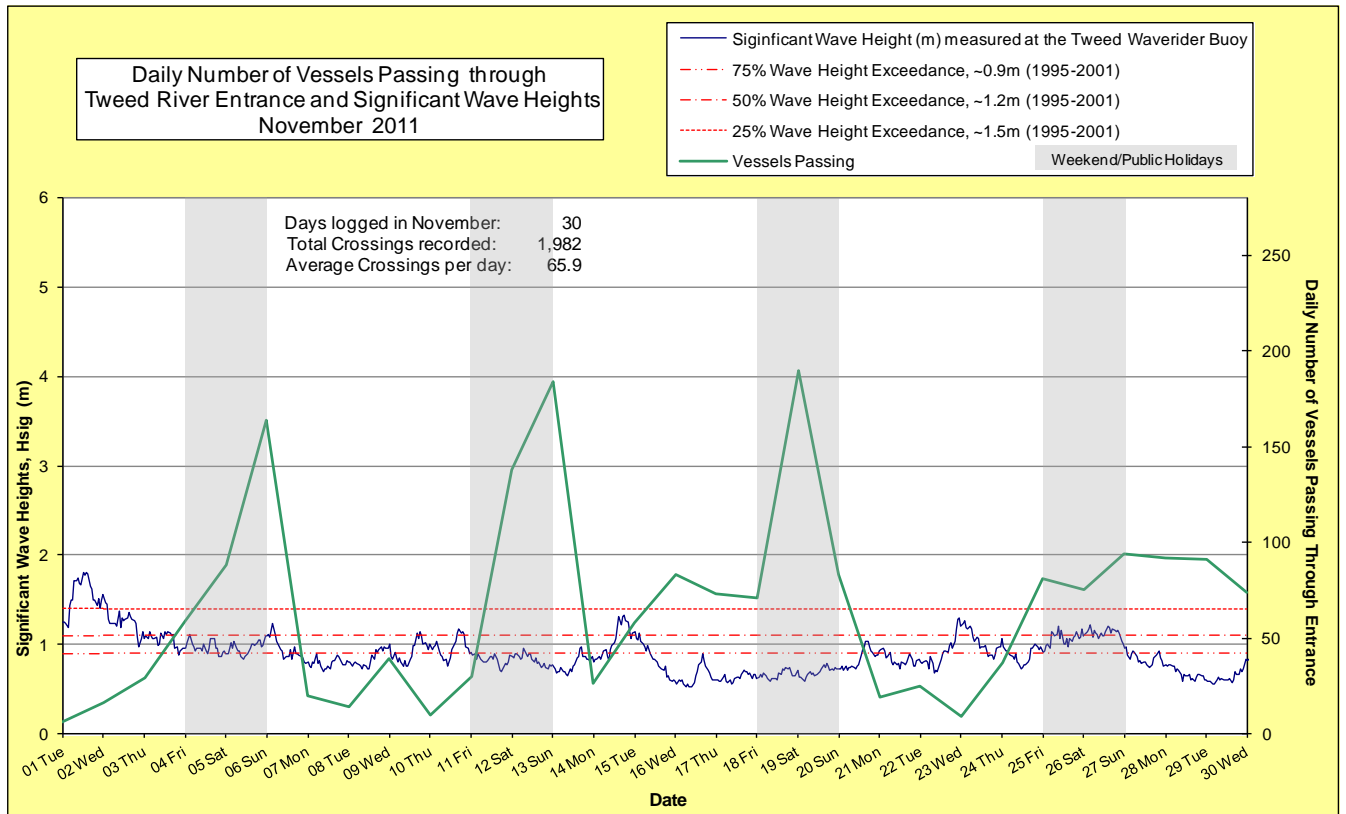
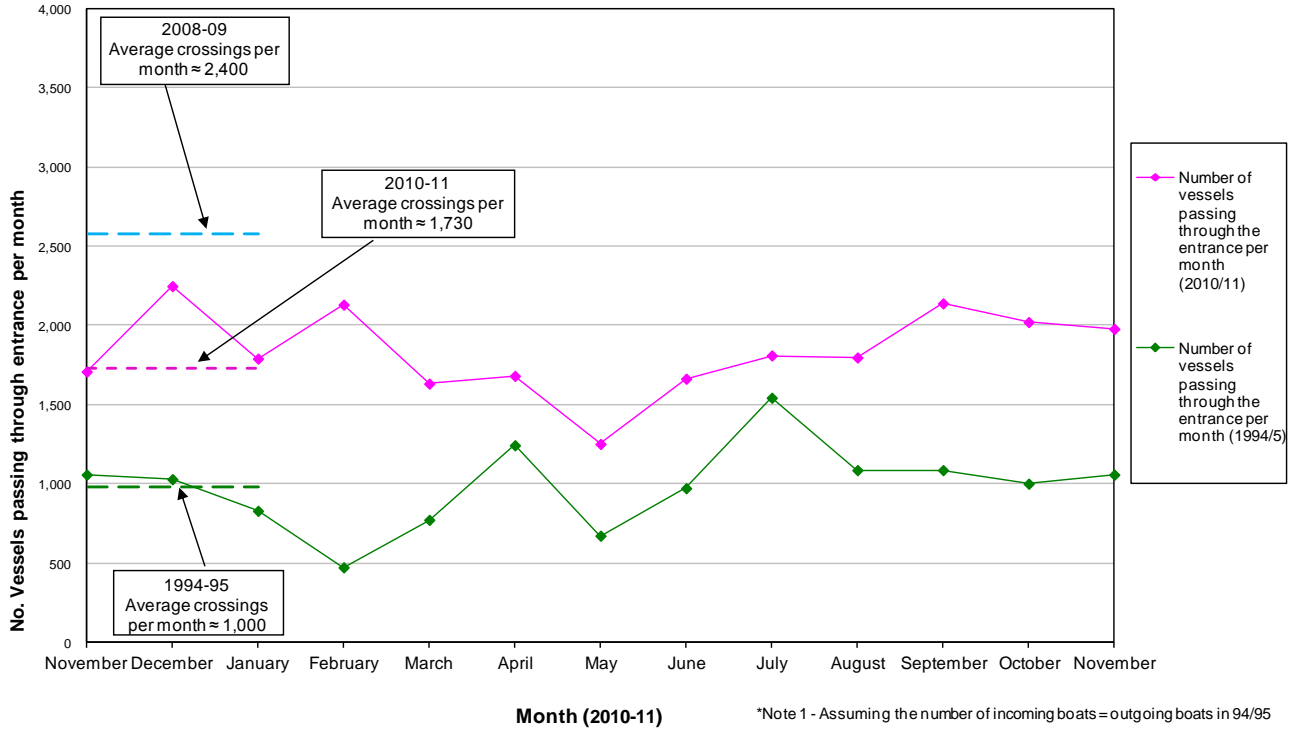
4. TWEED RIVER ENTRANCE CONDITIONS

MARINE RESCUE NSW - MONITORING RESULTS

 Weekends and public holidays

Date	Navigation Rating Impassable-----Good					Number of Boats
	Impassable (1)	Difficulty Encountered (2)	Some Difficulty Encountered (3)	Relatively Good Crossing (4)	Good Conditions (5)	
1 st						6
2 nd						16
3 rd						29
4 th						59
5 th						88
6 th						164
7 th						20
8 th						14
9 th						39
10 th						10
11 th						30
12 th						138
13 th						184
14 th						26
15 th						58
16 th						83
17 th						73
18 th						71
19 th						190
20 th						83
21 st						19
22 nd						25
23 rd						9
24 th						37
25 th						81
26 th						75
27 th						94
28 th						92
29 th						91
30 th						74
						Total
						1,978

Comparison of the Number of Vessels Passing Through the Entrance per month 2010/11 compared to 2008/09 and 1995 (prior to entrance improvements)



5. WAVE & SURFING CONDITIONS

Dominant swell condition: Wave heights ranged from calm to average seas for most of the month (0.5 to 1.3 m) with a short moderate sea condition occurring on 1st with H_s recorded up to 1.8 m. Wave directions varied from ENE to ESE but predominantly from the ESE.

Moderate sea events: 1st November.

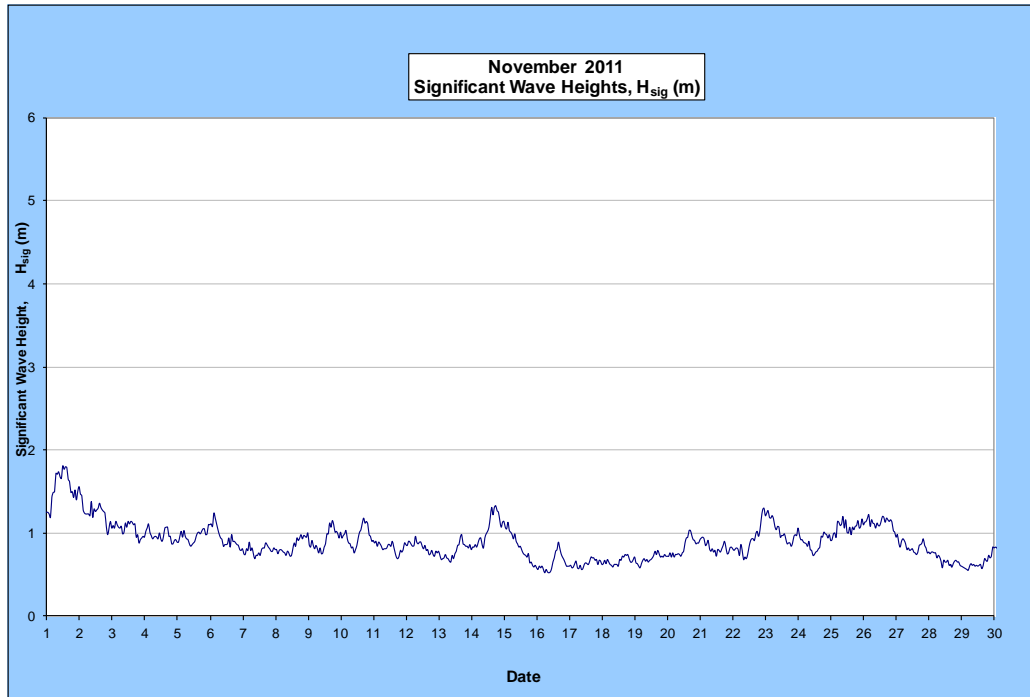
Monthly minimum significant wave height: 0.5 m on 16th November

Monthly maximum significant wave height: 1.8 m on 1st November

Number of days on which waves were below 1.0 m: 21 days

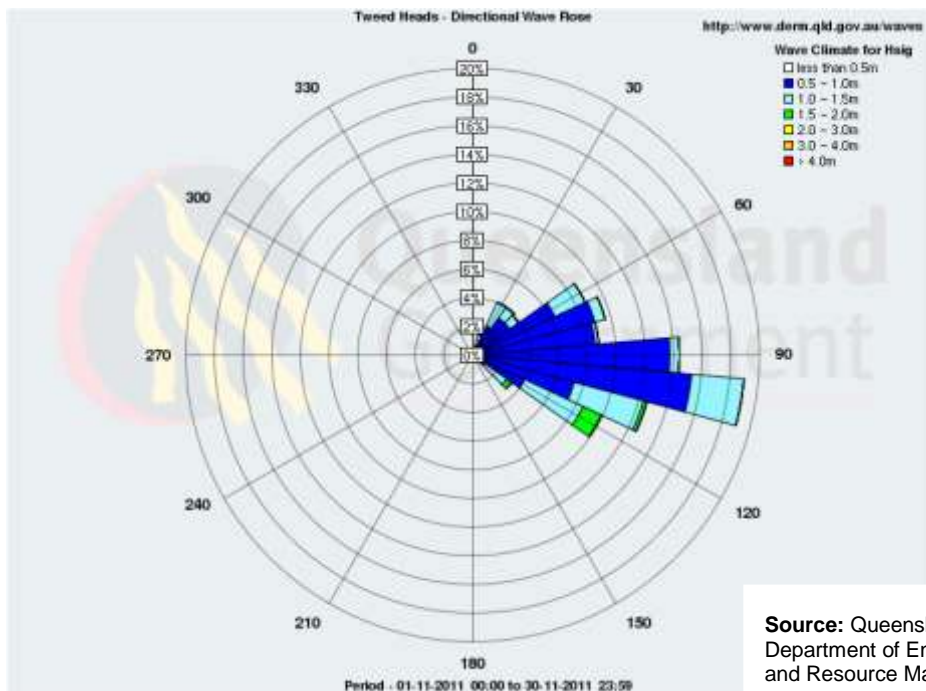
Number of days on which waves were above 2.0 m: 0 days

(Source: Tweed & Brisbane Wave Buoy; QDERM)



A link to data recorded by the Tweed Waverider Buoy is available at: <http://www.derm.qld.gov.au/waves>

WAVE DIRECTION



Source: Queensland Department of Environment and Resource Management

UPCOMING SURF AND SURF LIFESAVING EVENTS

- 2011 Wahu Surfer Grom Comp, 10-11 December 2011, Gold Coast
- 2012 Quick Silver and Roxy Pro's, 25 February to 7 March 2012, Gold Coast

PHOTOGRAPHS OF SURF CONDITIONS



Kirra, 1 November 2011 (source: Swellnet Surf)



Greenmount, 22 November 2011 (source: Swellnet Surf Report)

SURF REPORT OVERVIEW

DATE	SURF	DIRECTION	COMMENTS
1	Clean, 0.9m	E	The points are 0.6-0.9m and D'bah is a consistent 0.9m.
2	Clean, 0.6-0.9m	ESE	0.6m on the points and 0.9m3 at D'bah.
3	Peaky, 0.6m	E	There's a lot happening out there right now. There is still 0.9m at D'bah
4	Choppy, 0.6m	E	Options are: tiny point waves out of the wind, or bigger wobbly ones at D'bah
14	Choppy, 0.3m	ENE	It's tiny and weak and not much hope of a wave.
15	Choppy, <0.3m	E	The current run of terrible conditions is set to continue.
16	Clean, <0.3m	E	No change on the swell front, it's tiny and weak.
17	Choppy, <0.3m	E	Wow, what a bad run of conditions, micro mush.
18	Clean, <0.3m	E	It's literally ankle high with no energy in the tiny waves at all
22	Clean, 0.3m	NE	Dribbletown. Next to no energy out there.
23	Choppy, 0.3-0.6m	NE	Wind blown junk.
24	Clean, 0.3-0.45m	E	Showers, storms and a southerly change. Not much improvement in swell size.
25	Glassy, 0.3-0.6m	SSE	The swell picked up yesterday offering some good waves on the points over the low tide.
28	Inconsistent, 0.3-0.6m	E	We're back to small conditions.
29	Clean, 0.3m	E	Practically unrideable surf due to the tiny size.
30	Clean, 0.3-0.45m	ESE	It's still pretty much flat, D'bah has some little grovel waves on offer.

Source: Swellnet - Coolangatta Surf Report

Generally, October experienced generally small waves with mostly calm to average wave height conditions (0.5 to 1.3 m) with a short moderate sea condition on 1st.

END