

TRESBP ENVIRONMENTAL MONITORING SUMMARY

AUGUST 2014

OVERVIEW

In August, 2014:

- 80,278 m³ of sand was pumped to Snapper Rocks East.
- There were 8 media articles relating to the project area. Two were about Kirra beach, one about Coolangatta and the rest were about Gold Coast beaches in general.
- Sea conditions were average to moderate wave heights for most of the month (significant wave heights 0.8 to 2.0 m) with higher sea events on 17th and 23rd to 25th (significant wave heights up to 2.7 and 2.9 m respectively) and one minor storm on 28th (significant wave heights up to 3.3 m). Wave directions varied from NE to ESE but mostly from ENE to ESE.
- 742 vessel crossings were recorded for the month (this is about 60% less than the August average).
- The estimated amount of sand moving north towards the Tweed River Entrance by natural processes was in the order of 77,000 m³ (this is about 175% of the August average).

1. SAND PUMPING & DREDGING

Sand Delivery August 2014

Pumped:	80,278 m ³
Dredged:	0 m ³
Total:	80,278 m ³

The number of days sand was pumped this month = 26

Sand Delivery January 2014 to August 2014

Pumped:	364,702 m ³
Dredged:	0 m ³
Total:	364,702 m ³

Stage II Sand Delivery May 2000 to August 2014

Pumped:	7,449,584 m ³
Dredged:	2,061,972 m ³ *
Total:	9,511,556 m ³ *

* This Includes 22,870 m³ of sand delivered by dredge to Palm Beach between June and September 2005.

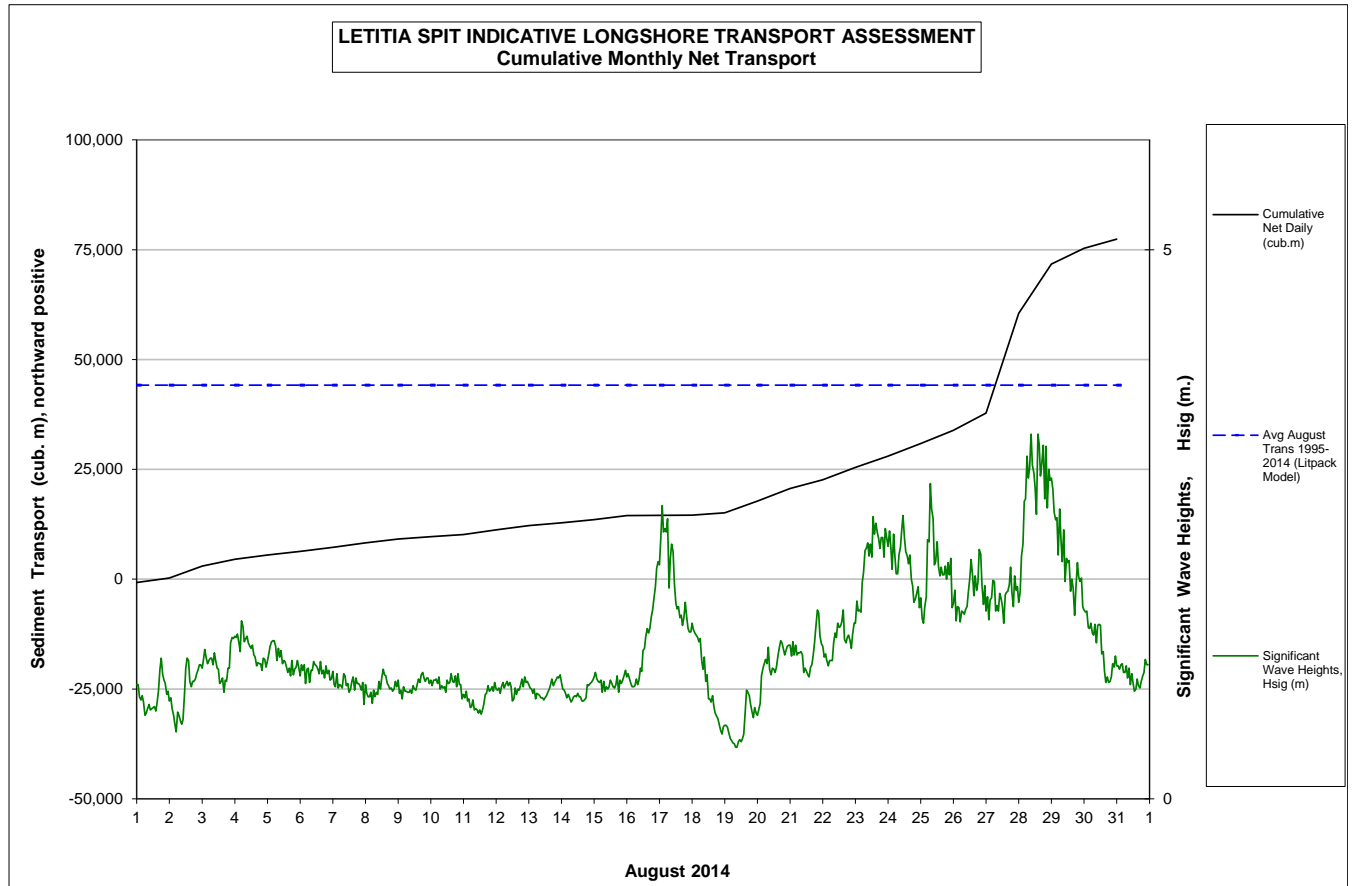


2. INDICATIVE LONGSHORE TRANSPORT

The graph below is based on simplified sediment transport modelling and is indicative only.

In August 2014 the estimated natural sand transport moving North towards the Tweed River entrance was calculated to be in the order of 77,000 m³.

This result is about 175% of the average estimated sand transport quantity of approximately 44,000 m³ for the month of August.



3. MEDIA COVERAGE

There was one media article on 11th (GC Bulletin) related to Coolangatta super bank and one media article on 18th (Brisbane Times) related to Gold Coast Beach Protection. One article on 26th (Gold Coast Bulletin) relating to restoration of Kirra Point groyne by Gold Coast City council.


There were two articles on 28th (Sydney Morning Herald and Courier Mail) relating to closure of Gold Coast beaches.

Two articles on 27th (news.com.au) and 30th (Gold Coast Bulletin) relating to perfect surf conditions at Gold Coast beaches.

There was one media article on 30st August (The Australian) relating to Kirra Point surfing regains its vibe.

4. TWEED RIVER ENTRANCE CONDITIONS

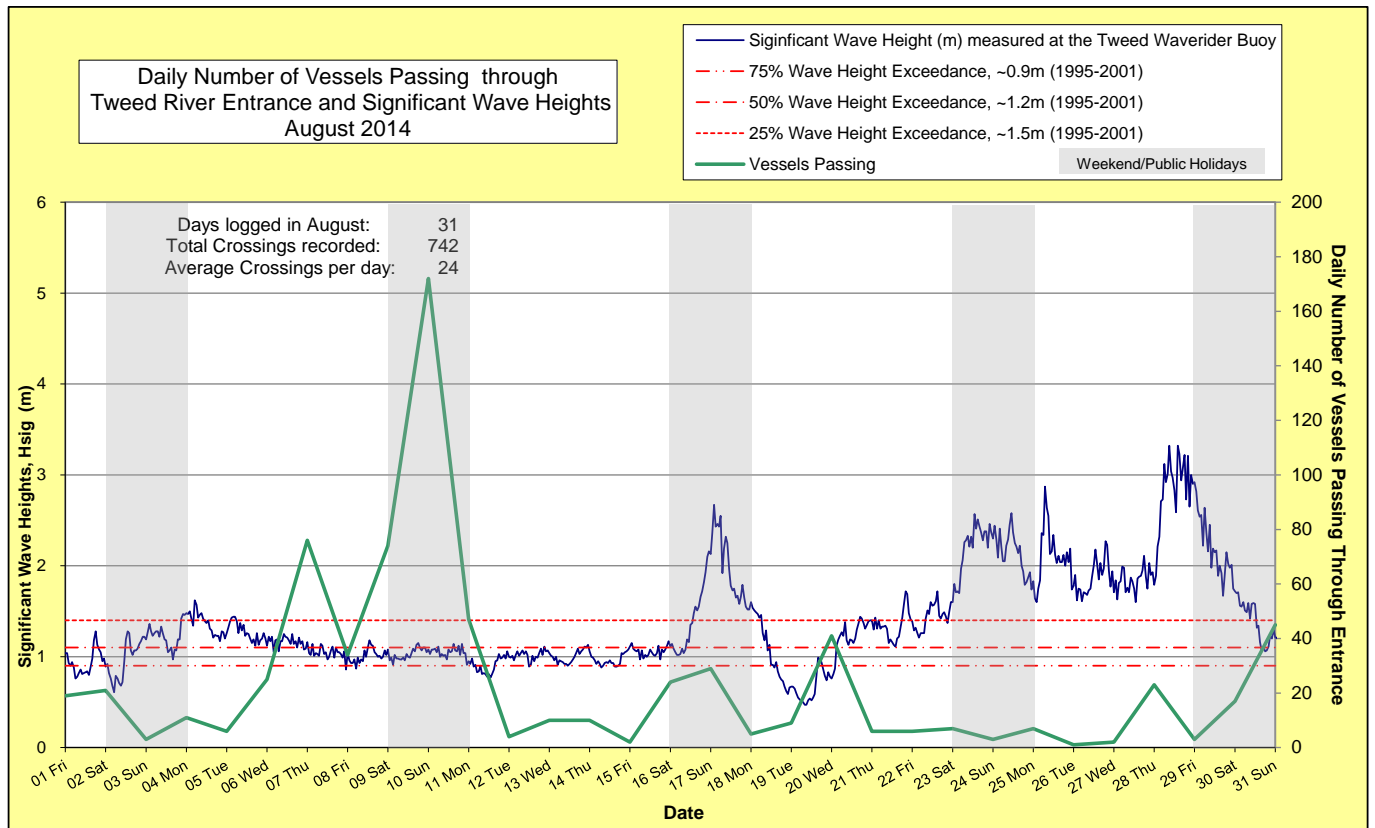
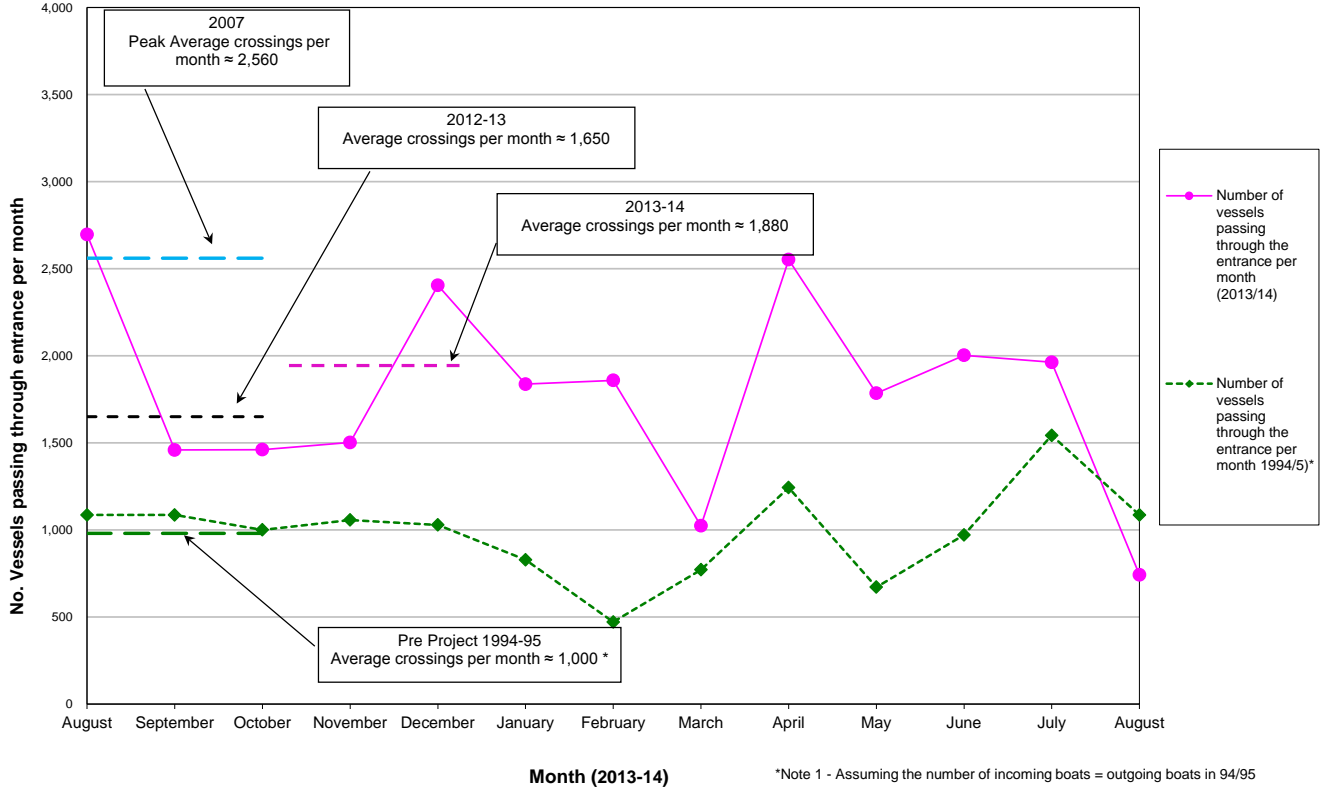
MARINE RESCUE NSW - MONITORING RESULTS

 Weekends and public holidays

Date	Navigation Rating Impassable-----Good					Number of Boats
	Impassable (1)	Difficulty Encountered (2)	Some Difficulty Encountered (3)	Relatively Good Crossing (4)	Good Conditions (5)	
1 st						19
2 nd						21
3 rd						3
4 th						11
5 th						6
6 th						25
7 th						76
8 th						34
9 th						74
10 th						172
11 th						47
12 th						4
13 th						10
14 th						10
15 th						2
16 th						24
17 th						29
18 th						5
19 th						9
20 th						41
21 st						6
22 nd						6
23 rd						7
24 th						3
25 th						7
26 th						1
27 th						2
28 th						23
29 th						3
30 th						17
31 th						45
						Total
						742

Source: Marine Rescue NSW, Point Danger

Comparison of the Number of Vessels Passing Through the Entrance per month 2013/14 compared to 2007 (peak crossings) and 1994/95 (prior to entrance improvements)



5. WAVE CONDITIONS

Wave Conditions over the month: Significant wave heights were average to moderate for most of the month (0.8 to 2.0 m) with higher sea events on 17th and 23rd to 25th (significant wave heights up to 2.7 and 2.9 m respectively) and one minor storm on 28th (significant wave heights up to 3.3 m). Wave directions varied from NE to ESE but mostly from ENE to ESE.

Monthly minimum significant wave height: 0.5 m on 19th August.

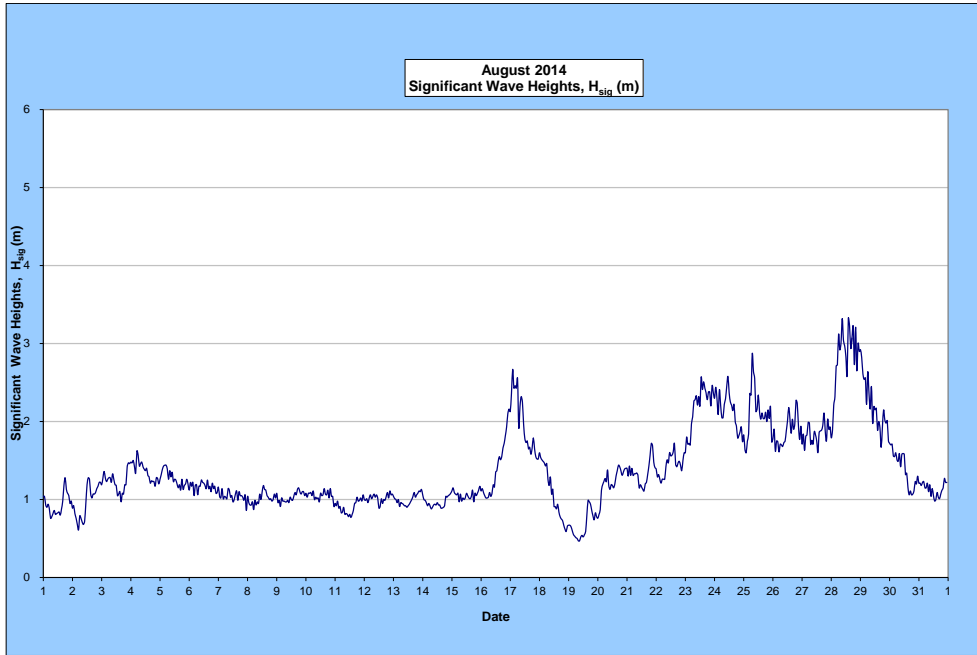
Monthly Maximum significant wave height: 3.3 m on 28th August.

Number of days on which waves were below 1.0 m: 16 days

Number of days on which waves were above 2.0 m: 9 days

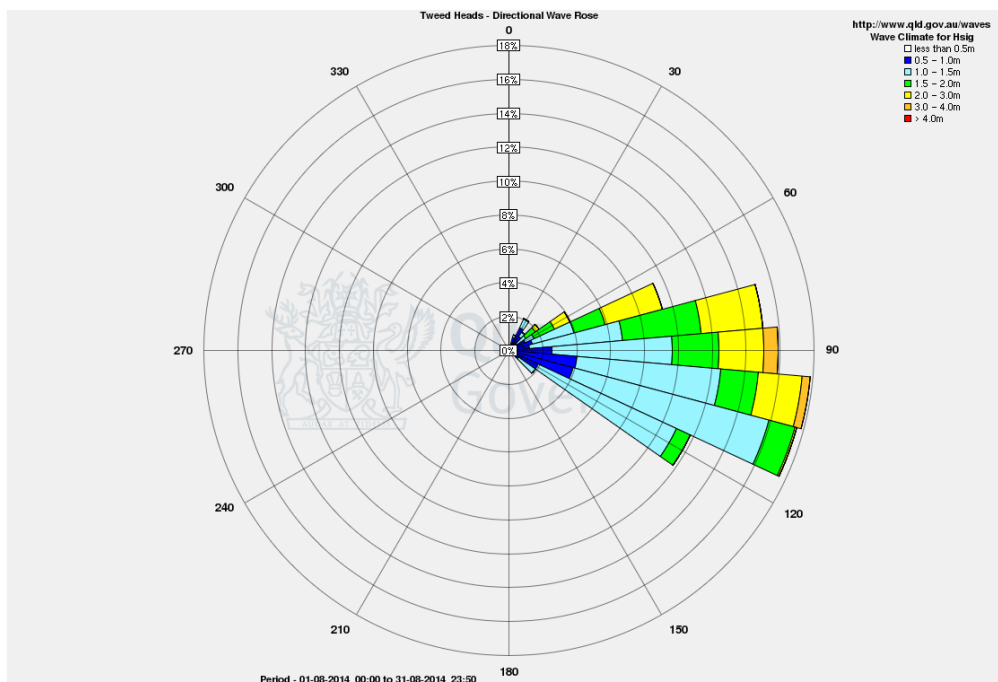
Note: Significant wave heights or H_{sig} is the average of the highest one third of recorded waves.

(Source: Tweed & Brisbane Wave Buoy; Queensland Government)



A link to data recorded by the Tweed Waverider Buoy is available at: <http://www.qld.gov.au/waves>

WAVE DIRECTION



END

Source: Queensland Government