

LOWER TWEED RIVER DEPTHS AS AT AUGUST-OCTOBER 2010

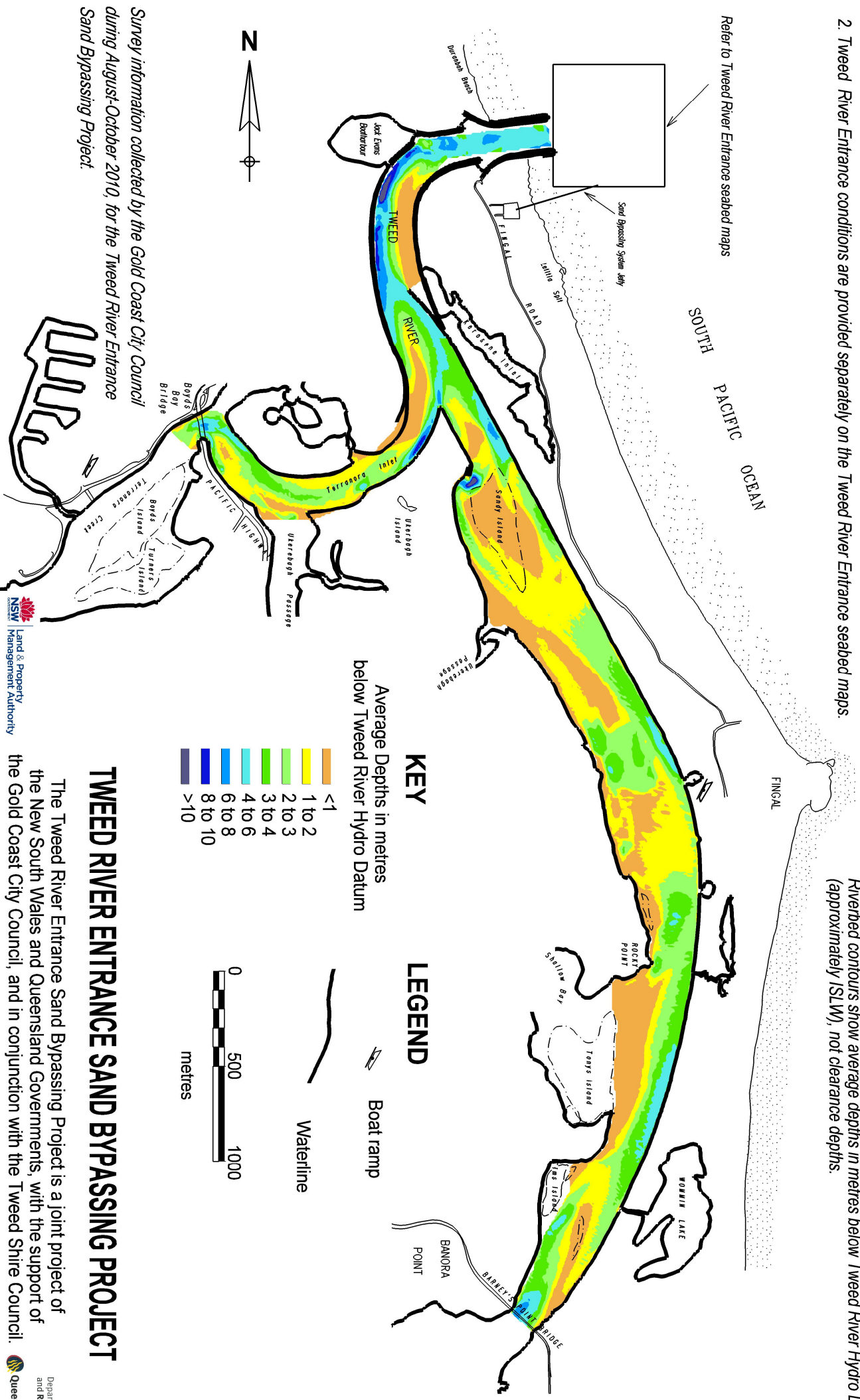
NOTES:

1. *Surveys are undertaken to monitor changes in the lower river shoals as part of the Tweed River Entrance Sand Bypassing Project's environmental monitoring program.*
2. *Tweed River Entrance conditions are provided separately on the Tweed River Entrance seabed maps.*

WARNINGS:

Channel locations and riverbed conditions may change and caution should be used when navigating this river.

Riverbed contours show average depths in metres below Tweed River Hydro Datum (approximately ISLW), not clearance depths.



TWEED RIVER ENTRANCE SAND BYPASSING PROJECT

The Tweed River Entrance Sand Bypassing Project is a joint project of the New South Wales and Queensland Governments, with the support of the Gold Coast City Council, and in conjunction with the Tweed Shire Council.