

TRESBP ENVIRONMENTAL MONITORING SUMMARY

MAY 2009

OVERVIEW

In May 2009:

- 50,524 m³ of sand was pumped.
- Three media articles referred directly to the project, one was neutral, two were mainly negative.
- Entrance conditions were good to impassable, with 2,854 boat crossings recorded (roughly 1/3 more than the average amount for the month of May).
- Surf quality was fairly calm and good for most of the month, but extremely dangerous during the high sea event from 19 to 26 May (max Hsig = 5.6m).
- Tweed River tide data for May 2009 has not yet been received. March 2009 river tides conformed to ocean tide patterns and were not significantly impacted by the project.
- Sand transport conditions were fairly calm for most of the month, but increased significantly during the severe storm from 19 to 26 May. The estimated amount of sand moving north towards the Tweed River Entrance by natural processes was about 194,000 m³ (just over three times the May average).

1. SAND PUMPING & DREDGING

Sand Delivery May 2009

Snapper Rocks East:	28,745m ³
Duranbah:	21,779m ³
Total:	50,524m ³

Sand Delivery January to May 2009

Pumped:	248,312m ³
Dredged:	0m ³
Total:	248,312m ³

Sand Delivery January to May 2008

Pumped:	283,644m ³
Dredged:	19,791m ³
Total:	303,435m ³

Stage II Sand Delivery May 2000 to May 2009

Pumped:	5,254,209m ³
Dredged:	1,979,755m ³
Total:	7,233,964m ³

Department of Lands 

Department of **Environment**
and **Resource Management**

 **Queensland Government**

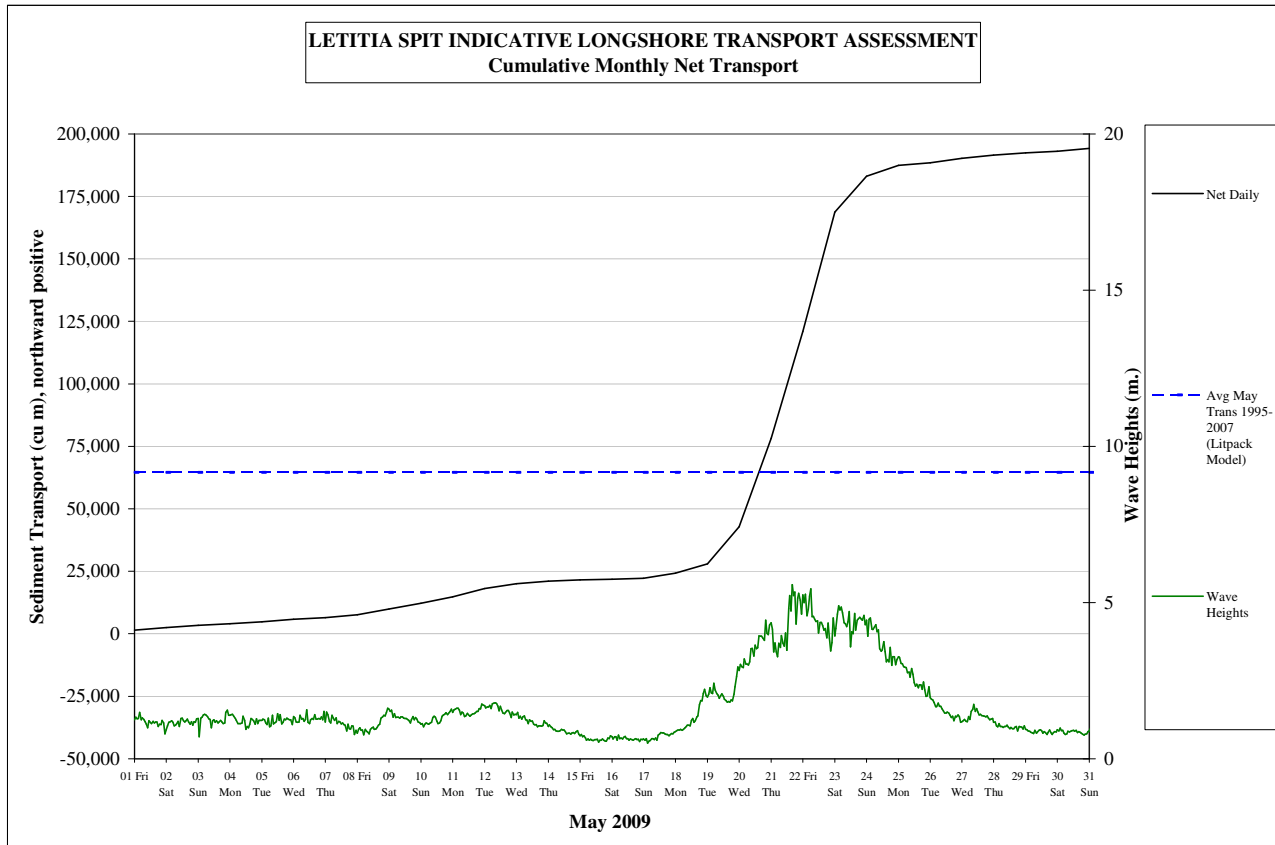


2. INDICATIVE LONGSHORE TRANSPORT

The graph below is based on a simplified sediment transport model and is indicative only.

May 2009 estimated natural sand transport (moving N towards Tweed entrance): 194,000 m³.

This result is just over three times the average sand transport for the month of May.



3. MEDIA COVERAGE

Tweed Daily News, 8 May, "Drama on Tweed bar"

"Police said the 43-year old man was an experienced boat operator, but the boat had been swamped by a wave as it crossed the bar"

Tweed Sun, 14 May, "Plans begin to restore surf break"

"Major stakeholders in the future of Kirra Beach will meet at the end of the month to start planning to shift sand in a bid to restore the iconic surfing break"

Tweed Daily News, 26 May, "Stay out of surf warns lifeguard"


"Part of the walkway has washed away at Duranbah and there is lots of debris in the water."

Gold Coast Bulletin, 26 May, "Maligned sand build-up saves Kirra beach from major damage"

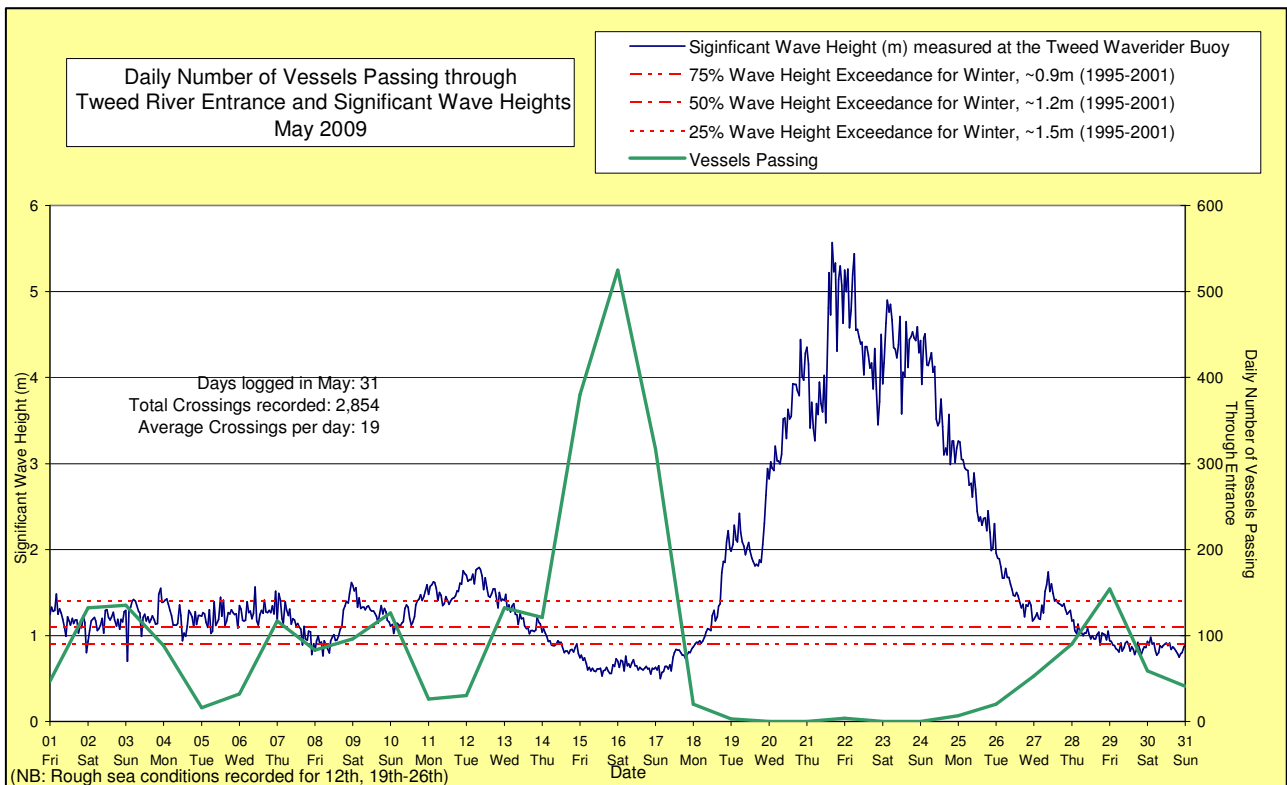
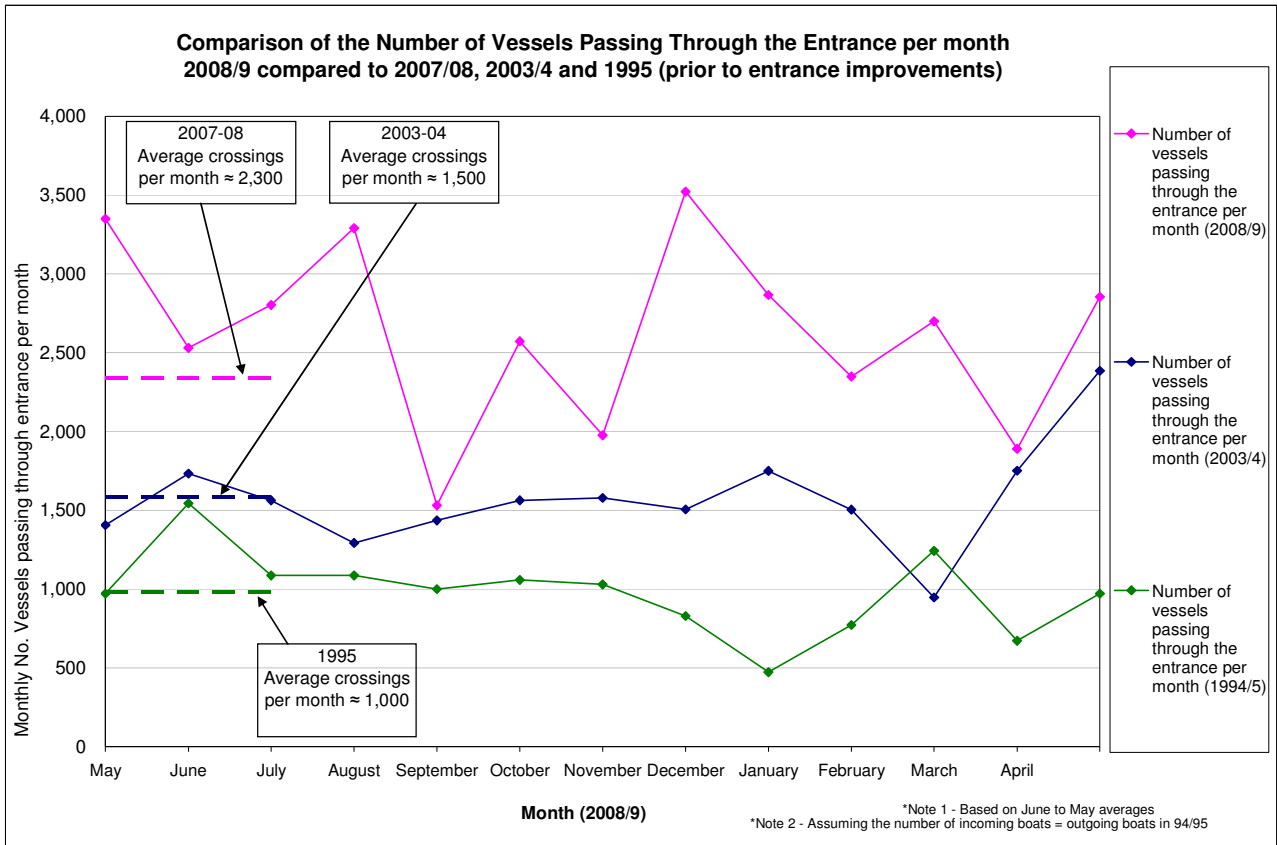
"You go anywhere on the Gold Coast now and you'll see radical erosion, but not at Kirra. I've always said that it would take a tsunami to move that sand. We didn't have a tsunami but it was the next closest thing and the sand is still there," said surfer Andrew McKinnon"

Tweed Daily News, 28 May, "Storm erosion tipped to last 'several years'"

"Trees started tumbling from the banks to the shore last week. "It's been going on for years now but it's even worse after the storms. It has taken so much sand away," [local resident] Mr Williams said. "Even if they switched the jetty off, it would take years for the beach to return to normal."

4. TWEED RIVER ENTRANCE CONDITIONS**VOLUNTEER MARINE RESCUE MONITORING RESULTS**
 Weekends and public holidays

Date	Entrance Conditions	Navigation Rating Impassable-----Good					Number of Boats
		Impassable	Difficulty Encountered	Some Difficulty Encountered	Relatively Good Crossing	Good Conditions	
1 st	Moderate, 20 Kt						47
2 nd	Moderate, 11 Kt						132
3 rd	Moderate, 17 Kt						135
4 th	Moderate, 21 Kt						88
5 th	Moderate, 14 Kt						16
6 th	Moderate, 16 Kt						32
7 th	Moderate, 15 Kt						117
8 th	Moderate, 18 Kt						83
9 th	Moderate, 15 Kt						96
10 th	Moderate, 15 Kt						126
11 th	Moderate, 21 Kt						26
12 th	Rough, 12 Kt						30
13 th	Moderate, 11 Kt						132
14 th	Moderate, 10 Kt						121
15 th	Slight, 8 Kt						380
16 th	Slight, 8 Kt						525
17 th	Slight, 13 Kt						317
18 th	Moderate, 21 Kt						20
19 th	Rough, 24 Kt						3
20 th	Rough, 32 Kt						0
21 st	Rough, 40 Kt						0
22 nd	Rough, 40 Kt						4
23 rd	Rough, 32 Kt						0
24 th	Rough, 32 Kt						0
25 th	Rough, 15 Kt						7
26 th	Rough, 14 Kt						20
27 th	Moderate, 11 Kt						53
28 th	Moderate, 12 Kt						90
29 th	Moderate, 10 Kt						154
30 th	Moderate 15 Kt						59
31 st	Moderate, 12 Kt						41
							2,854



5. WAVE & SURFING CONDITIONS

Dominant swell condition: Problems with the Tweed Waverider Buoy meant significant amounts of wave data were lost from 4-14, 20, 26 and 31 May so correlations with Brisbane Waverider Buoy were used for analyses. Waves were generally small this month, except during the severe storm that occurred from 19-26 May. Swell direction was mainly from the ENE to ESE, with waves from ENE during the storm event.

High sea events: 19 to 26 May (max Hsig = 5.6 m)

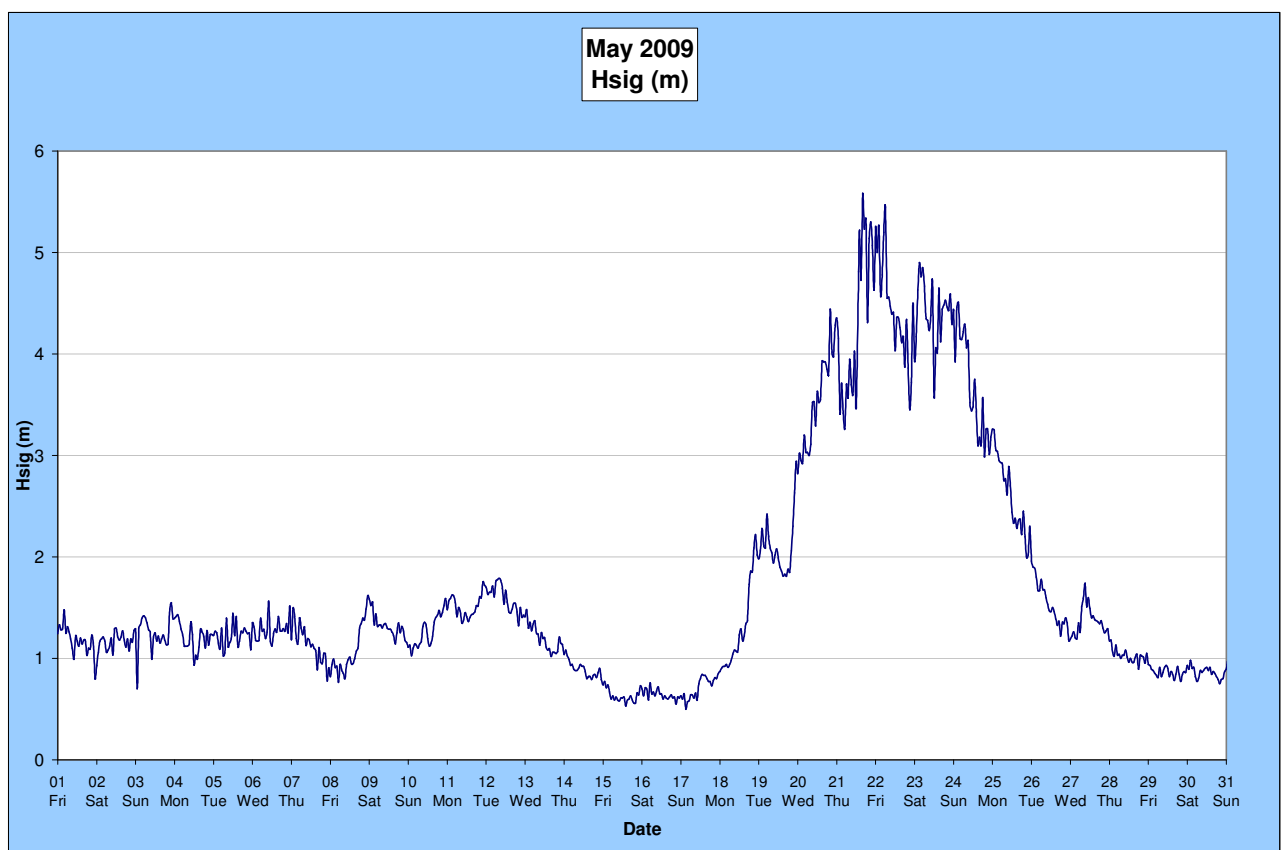
Monthly minimum significant wave height: 0.5 m on 17 May

Monthly maximum significant wave height: 5.6 m on 21 May

Number of days with waves below 1.0 m: 13 days

Number of days with waves above 2.0 m: 8 days

(Source: Tweed & Brisbane Waverider Buoys; BoM)



A link to data recorded by the Tweed Waverider Buoy is available at <http://www.epa.qld.gov.au/projects/waves/site.cgi?siteid=28&noback=4>

UPCOMING SURF & SURF LIFE SAVING EVENTS

- Arnette Queensland Junior Surfing Titles – 6-8 June, Gold Coast
- Fantastic Noodles Regional Junior Surfing Titles – 20 June, Tweed-Byron Coast
- Surfing Far North Coast Surfmasters Titles – 21 June, Tweed-Byron Coast
- Surfing Australia Boys Surf Camp – 29 June to 1 July, Tweed-Byron Coast

Source: Surfing Australia & Surf Life Saving Queensland

SURF REPORT OVERVIEW

Based on media reports and surf quality observations by volunteer Mr Brian Mason.

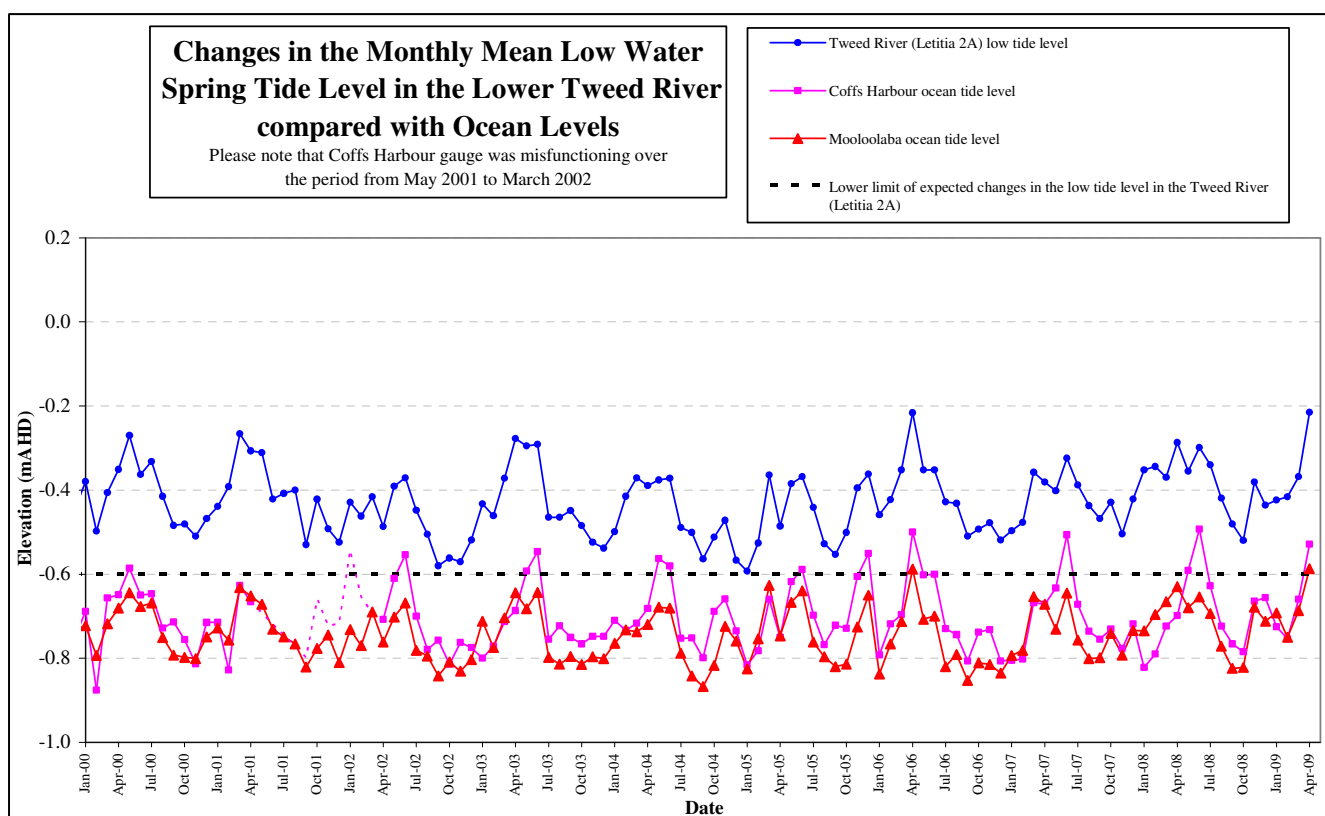
Date	Surfing Conditions
1-18 May	Tiny to small SE/ESE surf, variable winds, small fun waves at times.
19-26 May	Average ESE surf rising to huge. Stormy conditions and gale force winds at times. Only suitable for experienced tow-in surfers at open beaches. Messy breaks.
27 May	Average ESE surf, with light winds. Hazardous debris in water. Clean waves on the points but sand banks have been battered by the storm.
28-31 May	Tiny ESE surf, light winds, small fun waves.

6. TIDES

Tweed River April 2009 Mean Low Water Spring (MLWS) tide level: -0.215 m AHD

The TRESBP has not had a significant impact on the Lower Tweed River tidal range to April 2009.

May 2009 tide data has not yet been received.



Comparison of Spring Tidal Range

Please note that Coffs Harbour gauge was malfunctioning over the period from May 2001 to March 2002

