

TRESBP ENVIRONMENTAL MONITORING SUMMARY

MAY 2012

OVERVIEW

In May, 2012:

- 20,939 m³ of sand was pumped to Duranbah Beach and 10,851 m³ of sand was pumped to Snapper Rocks East.
- There were no media articles which related directly and indirectly to the project.
- Sea conditions were average for most of the month with two moderate sea events (7th - 9th & 31st) with maximum significant wave heights to 2.3 m.
- 2,086 vessel crossings were recorded for the month (this is about equal to the May average).
- The estimated amount of sand moving north towards the Tweed River Entrance by natural processes is in the order of 38,800 m³ (this is about half of the May average).

1. SAND PUMPING & DREDGING

Sand Delivery May 2012

Pumped:	31,790 m ³
Dredged:	0 m ³
Total:	31,790 m ³

Sand Delivery January to May 2012 (YTD)

Pumped:	169,637 m ³
Dredged:	0 m ³
Total:	169,637 m ³

Sand Delivery January to May 2011

Pumped:	213,146 m ³
Dredged:	0 m ³
Total:	213,146 m ³

Stage II Sand Delivery May 2000 to April 2012

Pumped:	6,498,544 m ³
Dredged:	2,039,104 m ³
Total:	8,537,648 m ³



Department of
Primary Industries
Catchments & Lands



Queensland Government

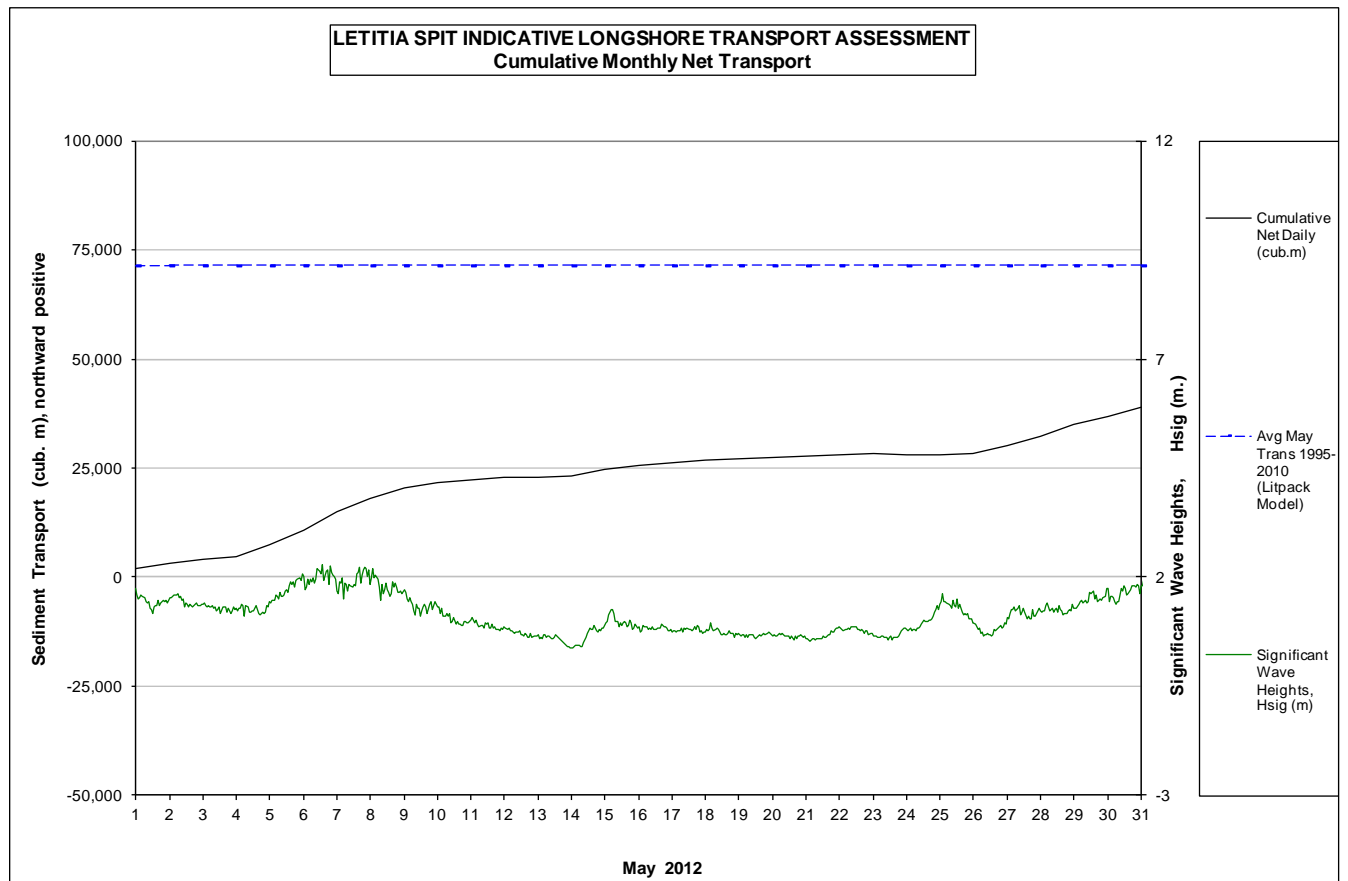


2. INDICATIVE LONGSHORE TRANSPORT

The graph below is based on simplified sediment transport modelling and is indicative only.


In May 2012 the estimated natural sand transport (moving N towards Tweed entrance): to be in the order of 38,800 m³.

This result is well below the average sand transport quantity of approximately 71,500 m³ for the month of May (ie about half of the average).



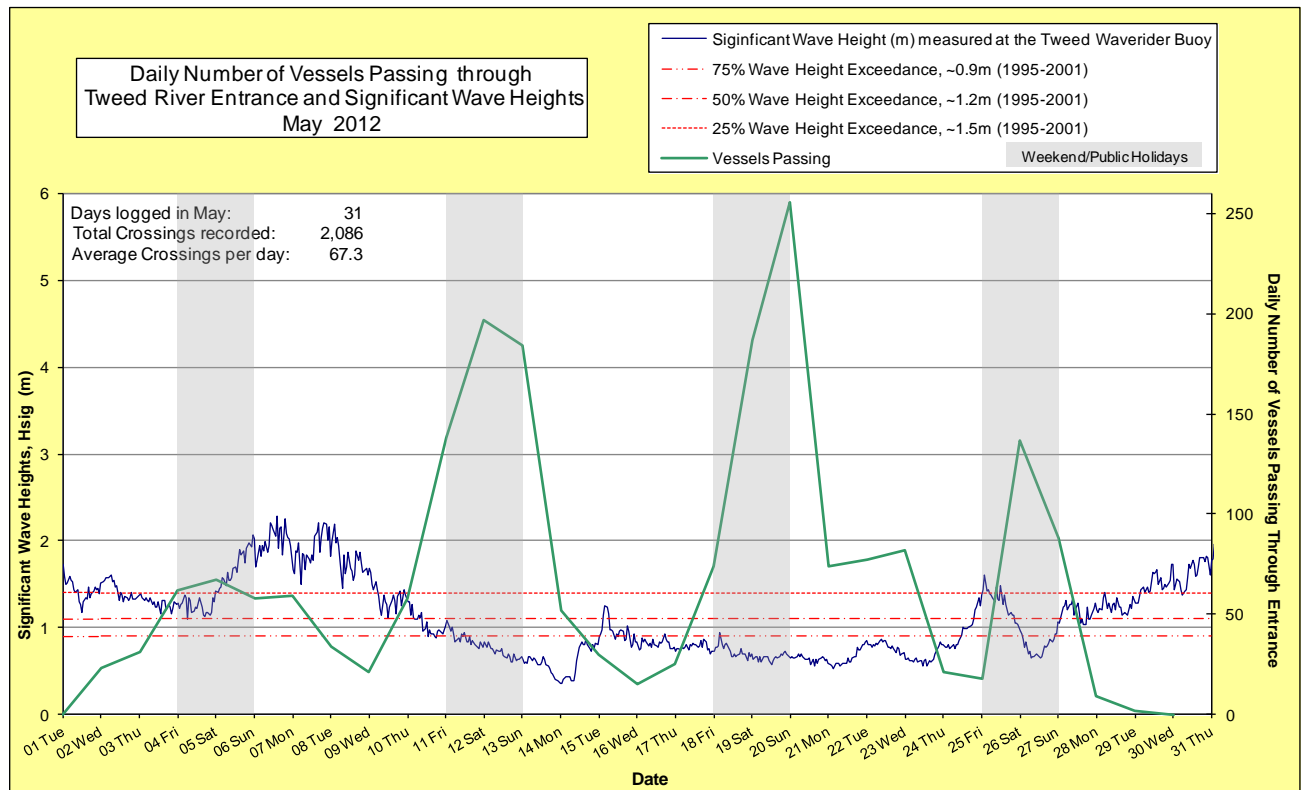
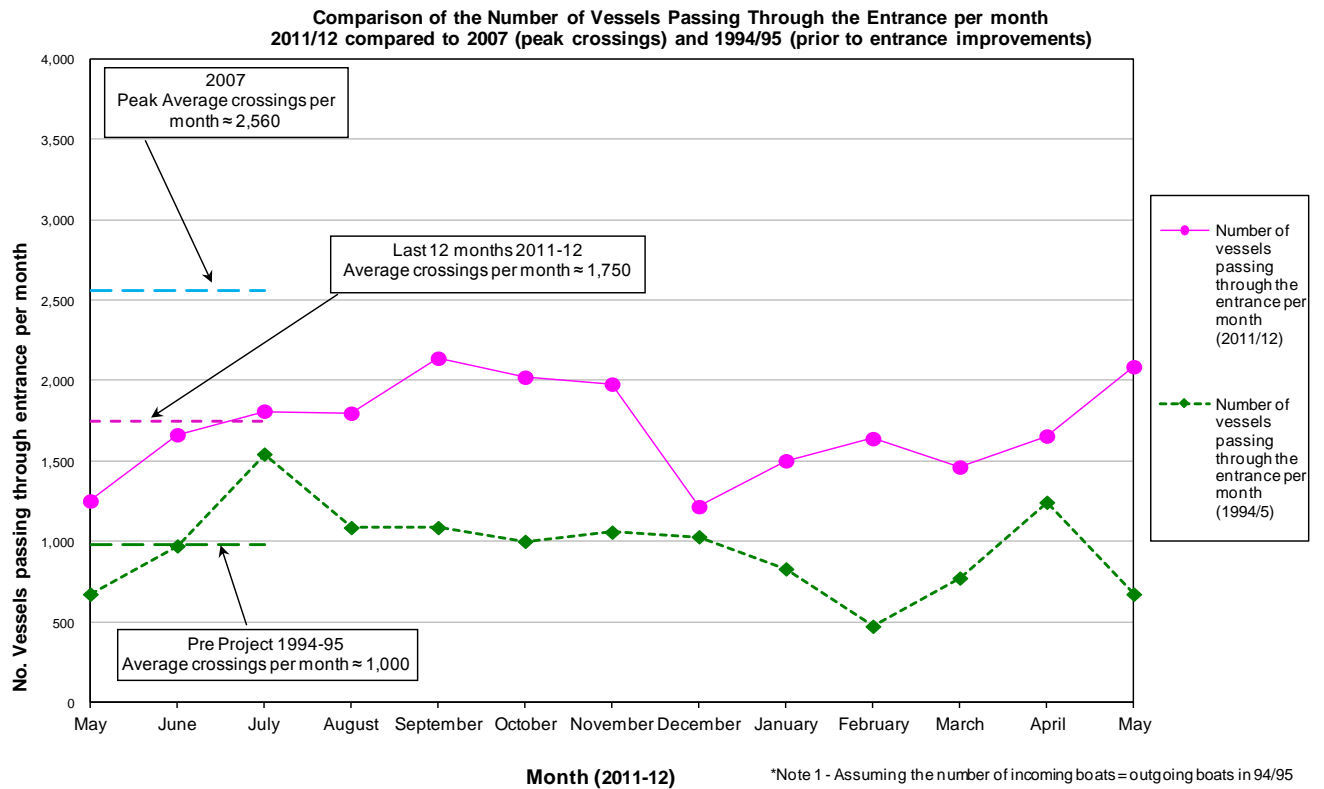
3. MEDIA COVERAGE

There were no media reports relating to the project during May 2012.

4. TWEED RIVER ENTRANCE CONDITIONS**MARINE RESCUE NSW - MONITORING RESULTS**
 Weekends and public holidays

Date	Navigation Rating Impassable-----Good					Number of Boats
	Impassable (1)	Difficulty Encountered (2)	Some Difficulty Encountered (3)	Relatively Good Crossing (4)	Good Conditions (5)	
1 st						0
2 nd						23
3 rd						31
4 th						62
5 th						67
6 th						58
7 th						59
8 th						34
9 th						21
10 th						58
11 th						138
12 th						197
13 th						184
14 th						52
15 th						30
16 th						15
17 th						25
18 th						74
19 th						187
20 th						256
21 st						74
22 nd						77
23 rd						82
24 th						21
25 th						18
26 th						137
27 th						88
28 th						9
29 th						2
30 th						0
31 st						7
Total						2,086

Source: Marine Rescue NSW, Point Danger



5. WAVE & SURFING CONDITIONS

Dominant swell condition: Significant wave heights were below average for most of the month. There were two moderate sea events (7th - 9th and 31st) with maximum significant wave heights to 2.3 m. Swell direction ranged from ENE to ESE but dominantly from the E.

Moderate sea events: 7th - 9th May.

Monthly minimum significant wave height: 0.36 m on 14th May.

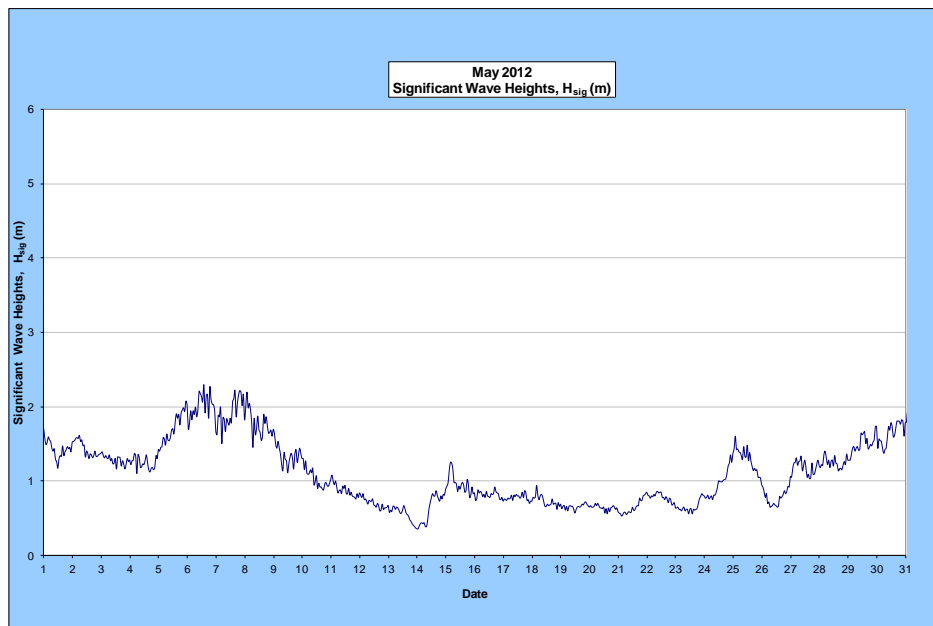
Monthly maximum significant wave height: 2.3 m on 6th May.

Number of days on which waves were below 1.0 m: 15 days

Number of days on which waves were above 2.0 m: 2 days

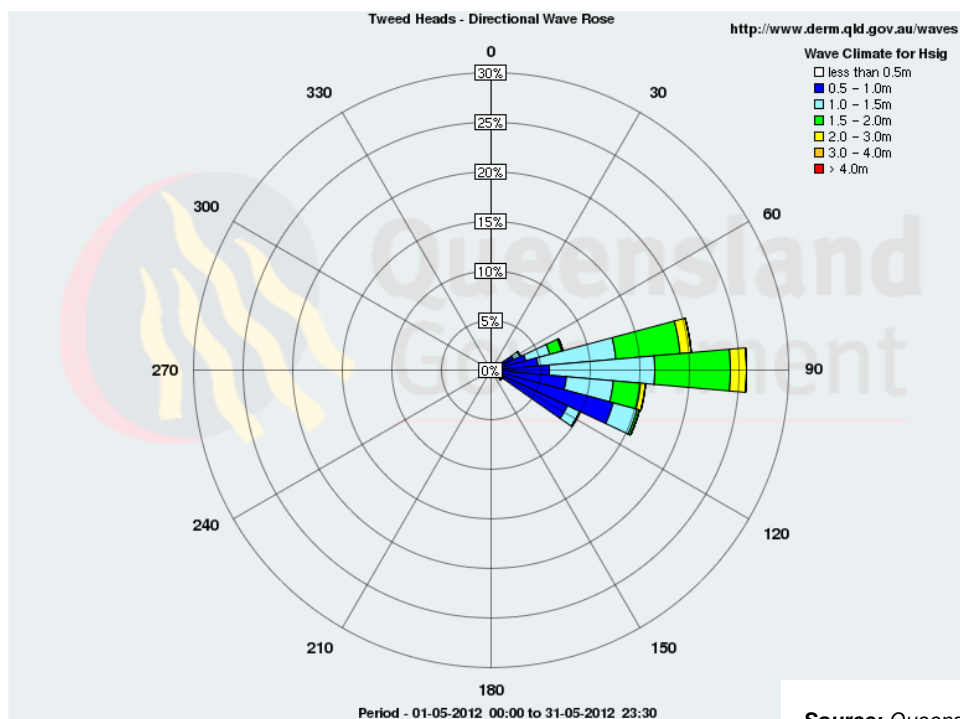
Note: Significant wave heights or H_{sig} is the average of the highest one third of recorded waves.

(Source: Tweed & Brisbane Wave Buoy; QLD Dept. Of Environment & Heritage Protection)



A link to data recorded by the Tweed Waverider Buoy is available at: <http://www.ehp.qld.gov.au/coastal/monitoring/waves/index.php>

WAVE DIRECTION



Source: Queensland Government

UPCOMING SURF AND SURF LIFESAVING EVENTS

- 2012 Billabong Occy's Grom Comp, 30 June to 4 July 2012, Gold Coast Qld
- 2012 World Surfari's Coast of Origin Interclub Series – Area Challenge, 14-15 July 2012, Gold/Sunshine Coast
- 2012 World Surfari's Coast of Origin Interclub Series – Regional Challenge, 21-22 July 2012, Gold/Sunshine Coast
- 2012 Queensland State Junior Titles, 25 to 27 September 2012, Gold Coast Qld

PHOTOGRAPHS OF SURF CONDITIONS



Duranbah, 7 May 2012
(source: Coastal Watch)



Greenmount Point, 7 May 2012
(source: Coastal Watch)



Snapper Rocks, 8 May 2012
(source: Coastal Watch)



Greenmount, 9 May 2012
(source: Coastal Watch)



Greenmount Point, 9 May 2012
(source: Coastal Watch)



Snapper Rocks, 10 May 2012
(source: Coastal Watch)

SURF REPORT OVERVIEW

DATE	SURF	DIRECTION	COMMENTS
1	Clean, 0.6-0.9 m	SE	Fun waves still about today. Swell is bigger on the open Tweed beaches, but there is more of a wobble through the line-up.
2	Clean, 0.6-0.9 m	SE	Fun size swell about on the points as the tide drops and D'bah.
3	Clean, 0.6-0.9 m	SE	The same as it ever was and definitely worth getting out of bed for.
7	Clean, 1.2-1.5 m	ESE	Will this epic run of swell ever stop? It's hard to imagine so. Surf size built yesterday and we've got solid 1.2-1.5m, perfect E/SE swell across the entire coast with light offshore winds and bright sunny skies. The points are perfect (and crowded) the beaches are thumping (and uncrowded). There's no need for recommendations on a day like today
8	Clean, 1.2 m+	ESE	Yet another morning of excellent waves. On incoming tide, D'bah and the S end beachies are the pick with excellent waves on the points.
9	Clean, 0.6-0.9 m	ESE	This swell just doesn't seem to want to die.
10	Clean, 0.6-0.9 m	ESE	There's still plenty of swell coming through the Goldy today. The exposed beaches such as D'Bah 0.6-0.9m sets.
11	Clean, 0.3-0.6 m	ESE	E/SE swell has dwindled back to 0.3-0.6m. There's still some shapely little waves if you've got a retro fish or a longboard.
15	Peak, 0.6-0.9 m	S	The points are tiny, almost flat but the exposed south swell spots are picking up.
16	Clean, 0.3-0.45 m	S	Almost completely flat on the points. No surfing for you today, work and school are looking like very good options.
17	Clean, 0.3-0.6 m	S	Still not much happening on the Goldy. The points are effectively flat but there are a few 0.3-0.6m waves at the exposed beaches.
18	Clean, 0.6 m	SSE	Small waves across the southern Goldy this morning.
21	Clean, 0.3 m	SE	Not much on offer with only 0.3m waves, you'll even be lucky to get something at the points today if you're desperate. Work, school or catch up on those tasks you've been putting off are the best options today
22	Clean, 0.3 m	SE	Small waves around the 0.3m mark from the SE are all we have today.
23	Clean, 0.3 m	ESE	The flatness continues with waves from the ESE only around the 0.3m mark.
24	Clean, 0.3-0.45 m	ENE	A cloudy morning with a messy, uneven swell from the ENE.
25	0.6 m	SE	Worth a look from D'bah to Black Rock a little bigger than 0.6 m. Snapper has some great waves.
27	0.6m	SE	Worth a look from D'bah to Black Rock on the Tweed Coast.
28	Clean, 0.6 m	ESE	Swell is ESE and it's clean & small. It's worth a look from D'bah to Black Rock on the Tweed Coast.
29	Clean, 0.6-0.9 m	ESE	Swell is a little bigger out of the ESE and it's clean. It's worth a look from D'bah to Black Rock on the Tweed Coast
30	1.2-1.5 m	ESE	The points are the go early on in the low tide. Snapper-Kirra, Currumbin, Burleigh. D'bah, south end beachies as the tide rises. It's pumping.
31	0.9-1.2 m	ESE	The points are the go early on the low tide, Snapper-Greenmount, Currumbin, Burleigh. D'bah, south. end beachies as the tide rises

Source: Swellnet & CoastalWatch Surf Report

Generally, May experienced below average waves for most of the month (with significant wave heights ranging mostly from 0.3 to 1.5 m). There were two moderate sea events on the on 7th - 9th & 31st (with significant wave heights up to 2.3 m).

END