

# TRESBP ENVIRONMENTAL MONITORING SUMMARY

## OCTOBER 2009

### OVERVIEW

In October 2009:

- 31,852 m<sup>3</sup> of sand was pumped to Snapper Rocks East.
- One media article referred directly to the project and was neutral in view.
- Entrance conditions were average with 1,460 boat crossings recorded (about 80% of the October average).
- Surf quality from Duranbah to Kirra was poor to average, with flat to average sized waves from variable directions throughout the month.
- The estimated amount of sand moving north towards the Tweed River Entrance by natural processes was about 25,000 m<sup>3</sup> (about equal to the October average).

### 1. SAND PUMPING & DREDGING

#### **Sand Delivery October 2009**

Pumped:	31,852m <sup>3</sup>
Dredged:	0m <sup>3</sup>
Total:	31,852m <sup>3</sup>

#### **Sand Delivery January to October 2009**

Pumped:	387,121m <sup>3</sup>
Dredged:	0m <sup>3</sup>
Total:	387,121m <sup>3</sup>

#### **Sand Delivery January to October 2008**

Pumped:	547,800m <sup>3</sup>
Dredged:	198,979m <sup>3</sup>
Total:	746,779m <sup>3</sup>

#### **Stage II Sand Delivery May 2000 to October 2009**

Pumped:	5,393,018m <sup>3</sup>
Dredged:	1,979,755m <sup>3</sup>
Total:	7,372,773m <sup>3</sup>



Land and Property  
Management Authority

Department of **Environment**  
and **Resource Management**



**Queensland** Government

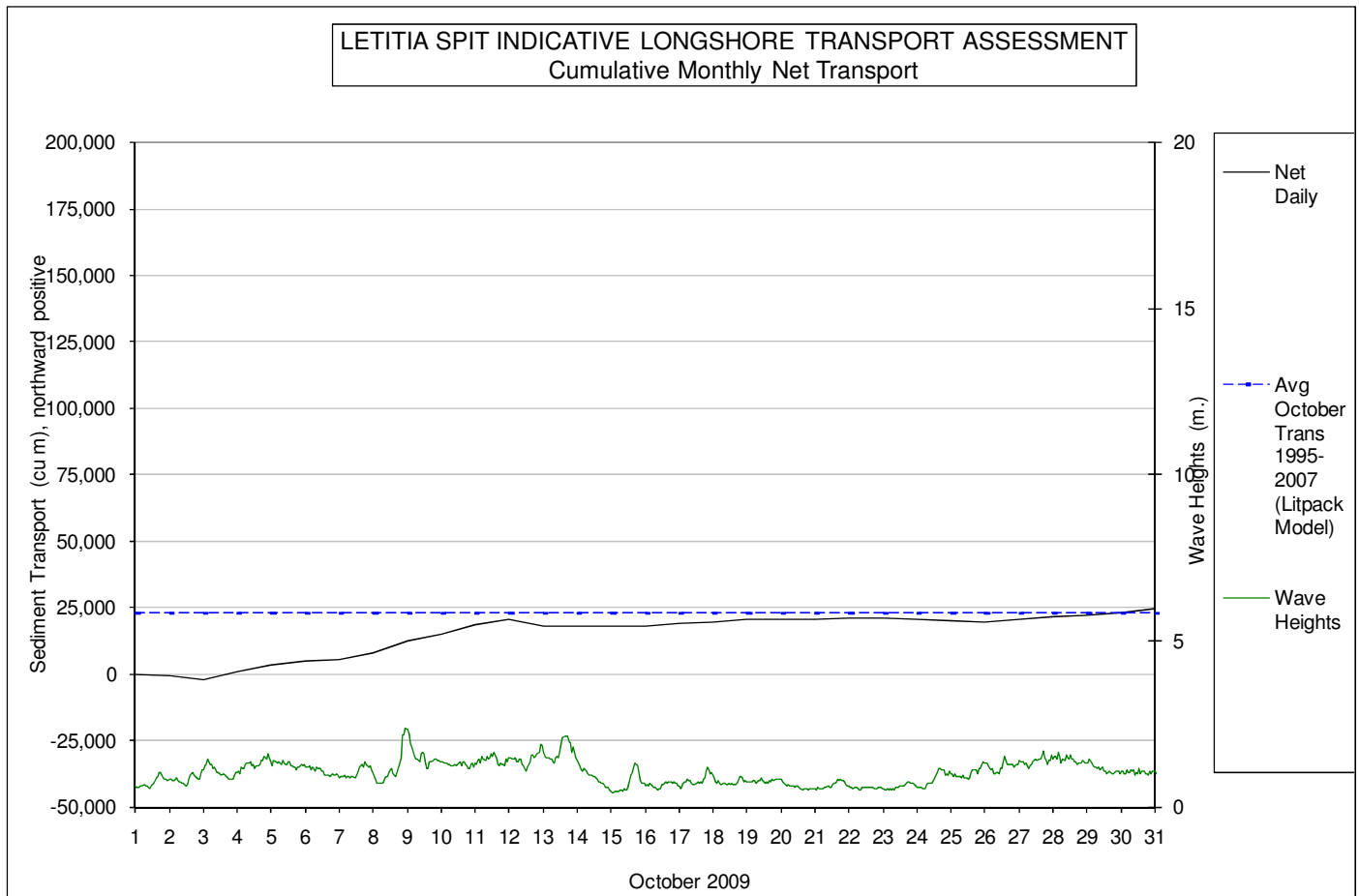


## 2. INDICATIVE LONGSHORE TRANSPORT

The graph below is based on a simplified sediment transport model and is indicative only.

October 2009 estimated natural sand transport (moving N towards Tweed entrance): 24,780 m<sup>3</sup>.


This result is about equal to the average sand transport quantity for the month of October.



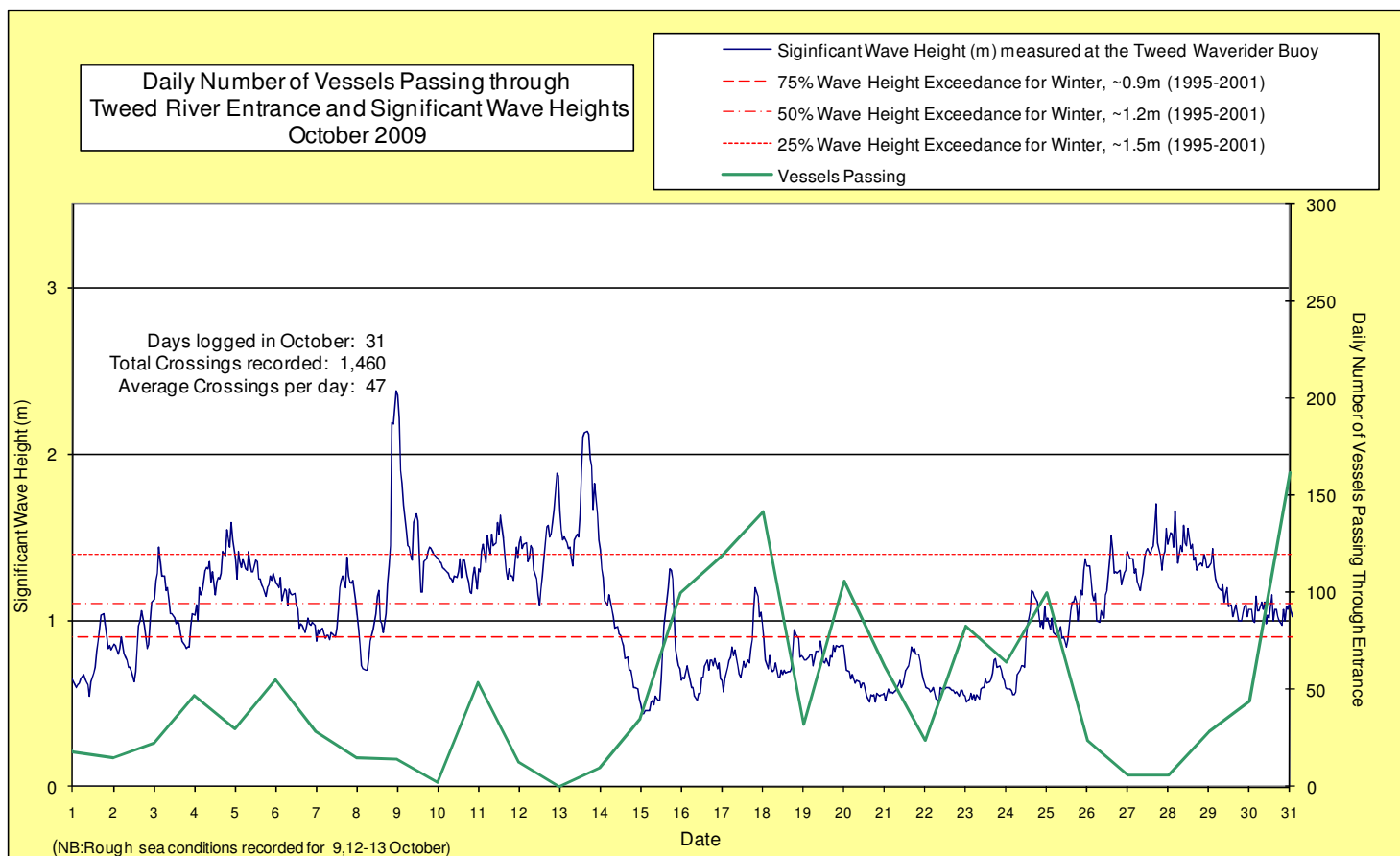
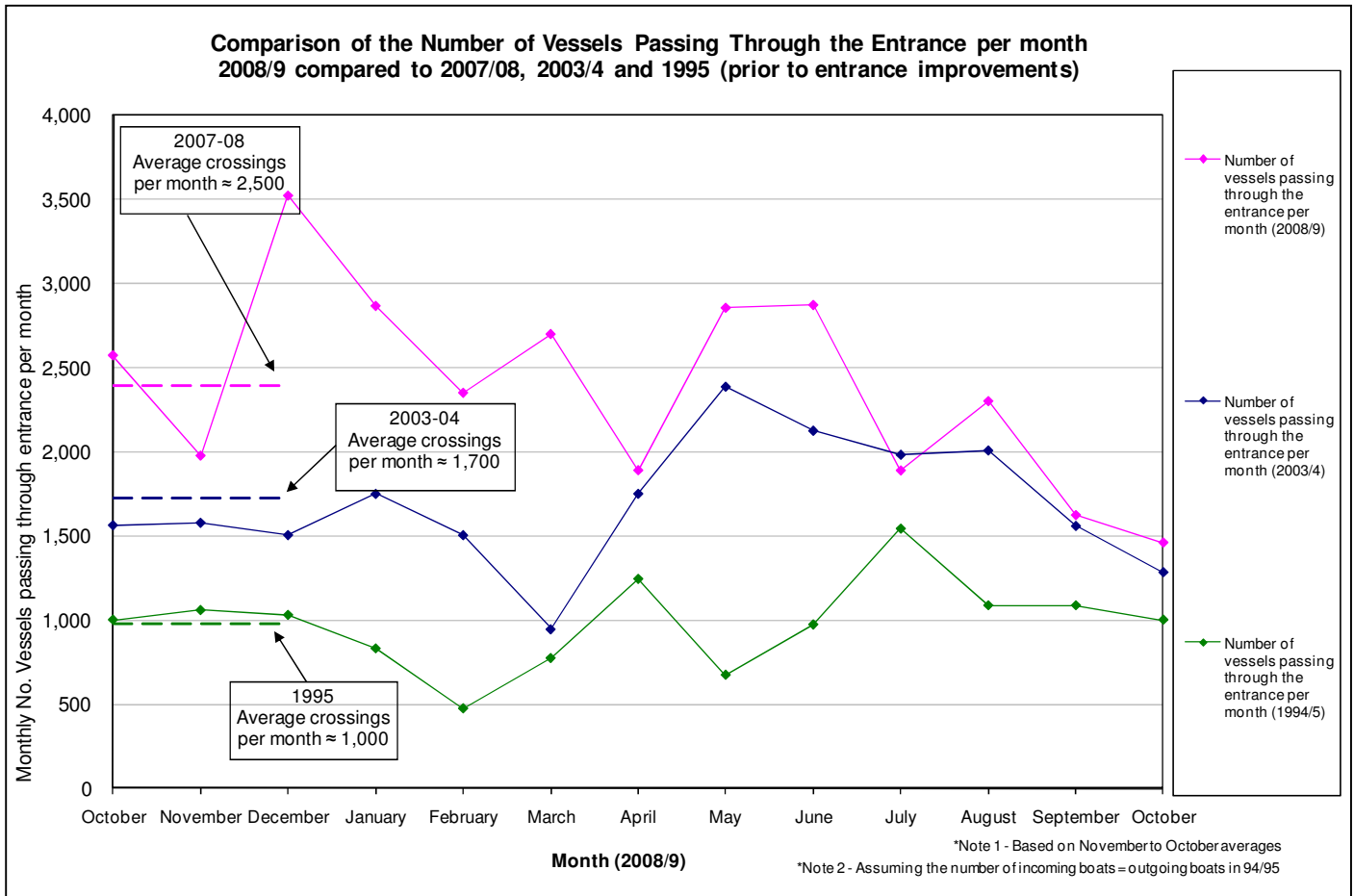
## 3. MEDIA COVERAGE

Tweed News, 19 October, "Rainbow Bay still the one"

*"Surfing Queensland CEO Craig Harland admitted on Friday serious thought had been given to moving the Quiksilver Pro to Burleigh earlier this year but a decision was made to commit to Snapper Rocks"*

**4. TWEED RIVER ENTRANCE CONDITIONS****VOLUNTEER MARINE RESCUE MONITORING RESULTS**
 Weekends and public holidays

Date	Entrance Conditions	Navigation Rating Impassable-----Good					Number of Boats
		Impassable	Difficulty Encountered	Some Difficulty Encountered	Relatively Good Crossing	Good Conditions	
1 <sup>st</sup>	Not recorded for this month						18
2 <sup>nd</sup>	↑						15
3 <sup>rd</sup>							22
4 <sup>th</sup>							47
5 <sup>th</sup>							30
6 <sup>th</sup>							55
7 <sup>th</sup>							28
8 <sup>th</sup>							15
9 <sup>th</sup>							14
10 <sup>th</sup>							2
11 <sup>th</sup>							54
12 <sup>th</sup>							13
13 <sup>th</sup>							0
14 <sup>th</sup>							10
15 <sup>th</sup>							35
16 <sup>th</sup>							100
17 <sup>th</sup>							119
18 <sup>th</sup>							142
19 <sup>th</sup>							32
20 <sup>th</sup>							106
21 <sup>st</sup>							62
22 <sup>nd</sup>							24
23 <sup>rd</sup>							83
24 <sup>th</sup>							64
25 <sup>th</sup>							100
26 <sup>th</sup>							24
27 <sup>th</sup>							6
28 <sup>th</sup>							6
29 <sup>th</sup>							28
30 <sup>th</sup>							44
31 <sup>st</sup>	↓						162
							<b>1,442</b>



## 5. WAVE & SURFING CONDITIONS

Dominant swell condition: Mainly 0.5 to 1.5 m waves from variable swell directions.

High sea events: None

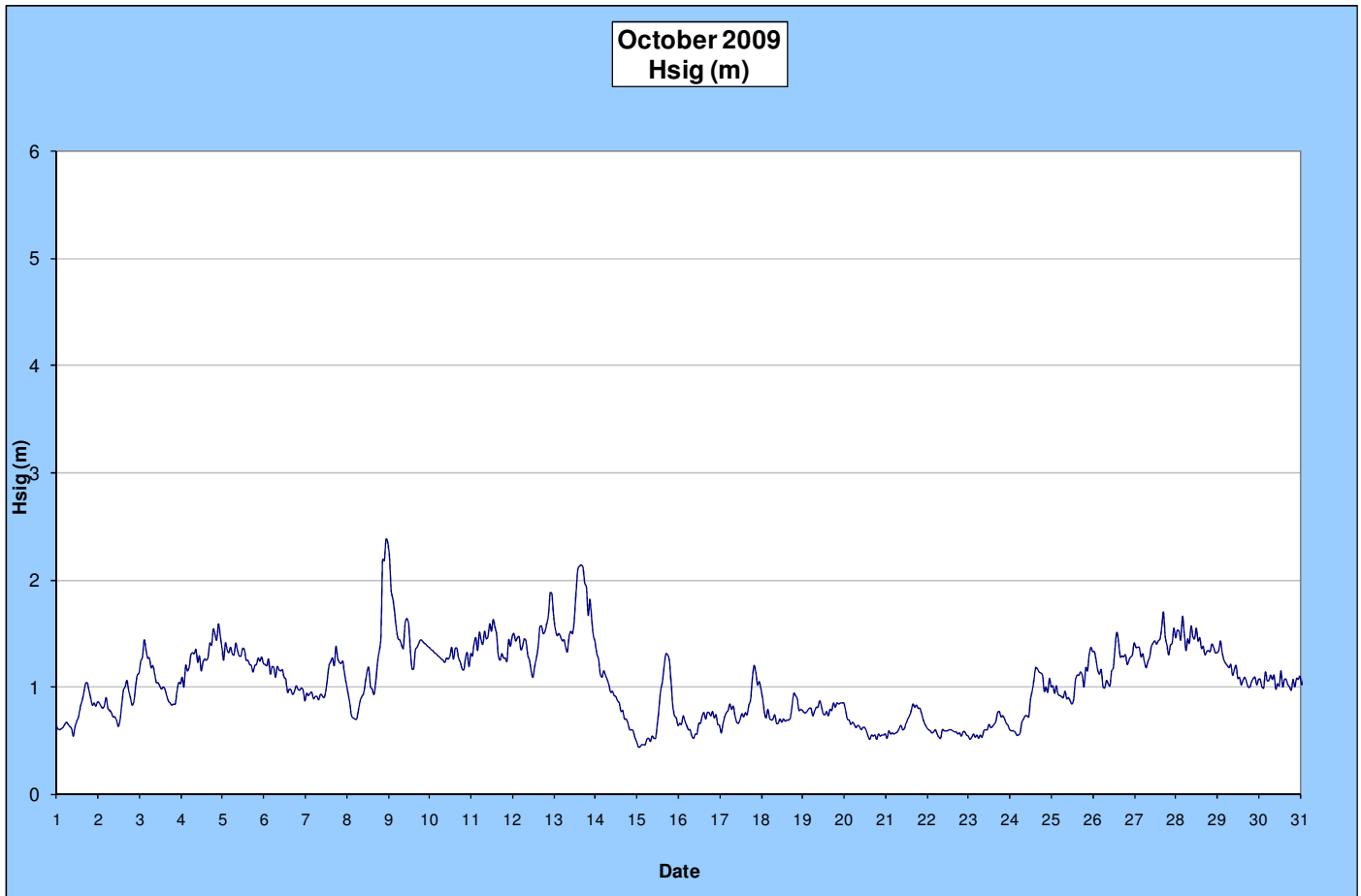
Monthly minimum significant wave height: 0.44 m on 15 October

Monthly maximum significant wave height: 2.38 m on 8 October

Number of days with waves below 1.0 m: 20 days

Number of days with waves above 2.0 m: 3 days

(Source: Tweed & Brisbane Wave Buoy; QDERM)



A link to data recorded by the Tweed Waverider Buoy is available at: <http://www.derm.qld.gov.au/waves>

### UPCOMING SURF & SURF LIFE SAVING EVENTS

- Oakley State Teams Challenge – 31<sup>st</sup> October to 1<sup>st</sup> November, Gold Coast
- Rip Curl Junior Challenge – 31<sup>st</sup> October to 1<sup>st</sup> November, Tweed-Byron Coast
- SEP Bodyboard Camp – 3<sup>rd</sup> to 6<sup>th</sup> November, Tweed-Byron Coast
- National Bodyboard Titles – 9<sup>th</sup> November, Duranbah
- Honolua Stand Up Paddle Challenge – 21<sup>st</sup> November, Gold Coast
- Boys High Performance Surf Camp – 23<sup>rd</sup> to 25<sup>th</sup> November, Tweed-Byron Coast

Source: Surfing Australia & Surf Life Saving Queensland

**SURF REPORT OVERVIEW**

Based on media reports and surf quality observations by volunteer Mr Brian Mason.

Date	Surfing Conditions on the Southern Gold Coast
1 -5 Oct	Tiny to small waves, wind affected at times. Variable swell directions.
6 Oct	Average sized waves from ESE, offshore winds for the morning only.
7-8 Oct	Tiny to small waves from ESE, small and fun for surfing.
9-11 Oct	Small to average waves from SSE, variable winds, 'hit & miss' surfing conditions.
12 Oct	Average sized waves from SE, good surfing before winds picked up.
13-14 Oct	Small to average waves, messy conditions.
15-25 Oct	Flat surf.
26-28 Oct	Small waves from E, strong onshore winds, messy conditions.
29 Oct	Small to average sized waves, messy at times, but some small fun waves for surfing.
30-31 Oct	Small waves from E, light winds and clean conditions.

**END**